

Restaurant Ware Collectors Network®



Iconic Establishments

A series of articles about the china used by venues ranging from hotels and restaurants to burger joints and hospitals

Writing and compilation by Larry R. Paul
Editing and layout by Phillip Lord

20th Century Fox Studio restaurants

23 November 2019

In 1916, William Fox formed Fox Film Corporation. Fox Film bought 100 acres between Pico and San Monica Boulevards. In 1926 Fox purchased Movietone, a company that had successfully added sound to motion pictures. In October, 1928 the new studio opened as Movietone City. In 1935 Fox Film merged with Twentieth Century Pictures, forming Twentieth Century Fox.

In 1930 **Cafe' de Paris** opened as part of the semi-permanent French restaurant set. The walls were decorated, by the studio's scenic painters, with a series of murals featuring world capitals and Hollywood stars. Today this restaurant serves about 225 lunches daily.

In 1934, Syracuse China produced pattern #89501, which is listed in their sample book as "Fox Movietone City" with a September 1935 date. The ornament shown is a stylized woman in an oversize black and white checkerboard-pattern dress. The crest on this pattern is the 20th Century Fox trademark within a circle, with "Cafe' De Paris".

A photograph by John Escobar, found on Pinterest, shows china with a rectangular crest along with a plate that has what appears to be a skyline border.

By 1946 the lady in the checkerboard dress had made her exit from the china, and was replaced by a series of five black lines flanking the logo.

By 1956 the number of black lines had been reduced to just one pin line flanking the logo. This version is shown in a 1956 photo of Marilyn Monroe and Josh Logan in the Commissary. This china was made by McNicol china.

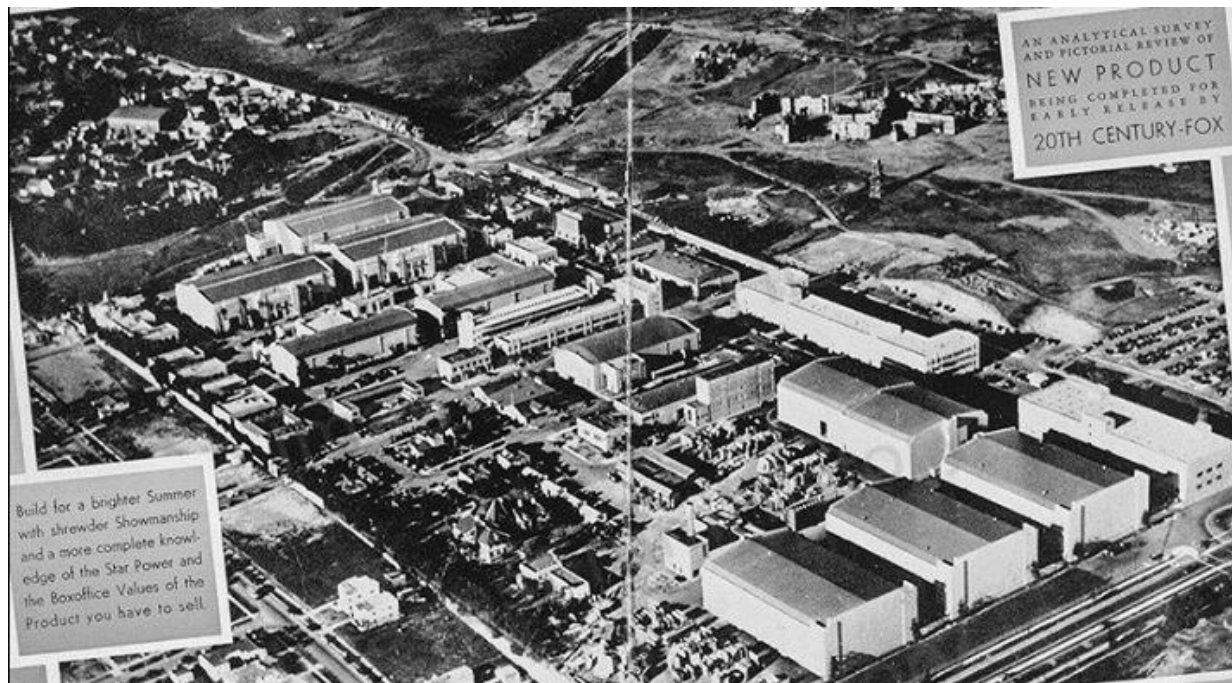
By 1960 the pin line was gone, leaving only the rim pin line and a thicker black line flanking the lower part of the logo.

By 1976, the black circle logo was replaced with the trademark in red, within an arch. The rim and verge lines were now red.

The next design change is a red rectangle crest flanked by red lines. This is on "Syrallite" china which Syracuse introduced in 1964. Cups are the "American Shape" shown in the 1970 Syracuse catalog (IDwiki - Syracuse). Some of these pieces have a second quarter 1983 date code. A blue version was also made in 1983.

Information sources. IDwiki- 1970 Syracuse catalog. Los Angeles Times, March 8, 2019 article by Stacy Perman, Meg James, and Ryan Faughnder. Martinbull, website. Fox

Studios website. Greatclassics, website. eBay, WorthPoint, AOL image search, Google image search, Wikipedia. Pinterest. YouTube.



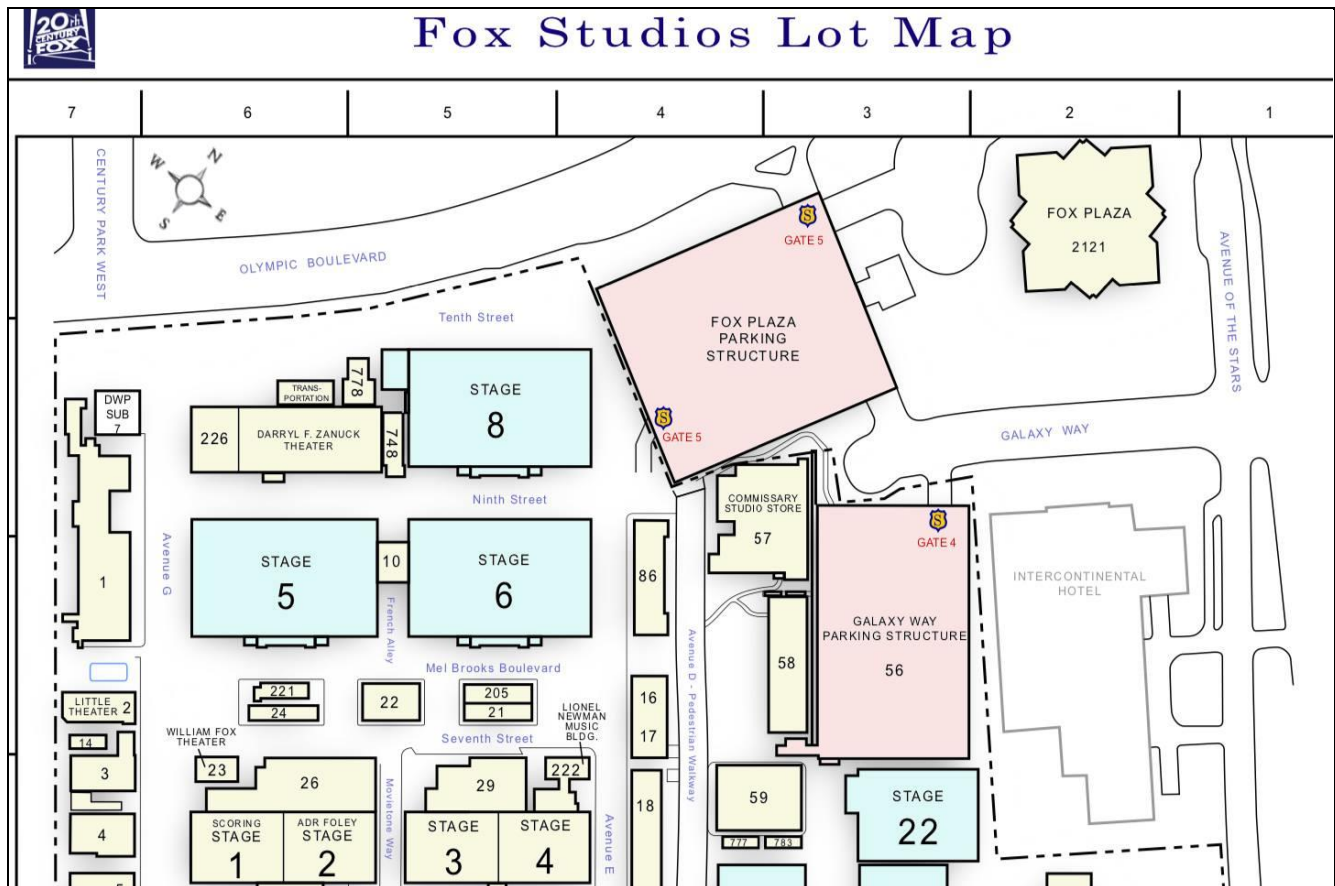
1938 aerial view of Twentieth Century Fox studios



Cafe' De Paris interior with murals, as it appears today

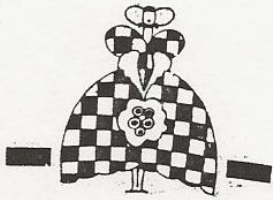


Interior view (Los Angeles Times photograph)



Studio map with commissary in building 57, near gate 5

Sept 20 1935



89501 reg.

Fox Movietone City

Syracuse salesman's sample book dated 1935



Lady ornament as it appeared on the china



Fox trademark logo



Plate with logo and two lady ornaments



Lady ornament plate backstamp for July, 1934



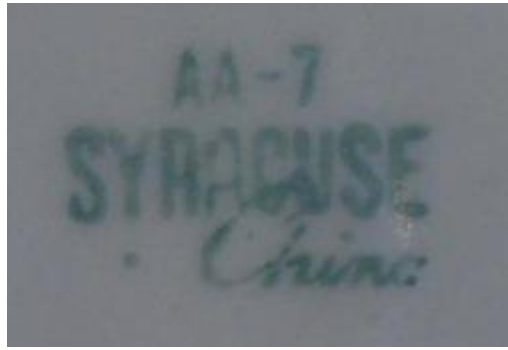
Collection of early pieces by John Escobar (source: Pinterest)



Crest flanked by 5 pin lines



Plate with five pin lines



1946 backstamp



Cream with single pin line flanking crest



1956 photograph with Marilyn Monroe and Josh Logan and china on table



McNicol cup and saucer



McNicol backstamp



1960 crest with no pin line



5-inch Syracuse bowl



1960 Syracuse backstamp



Revised crest used in 1976



Plate with red crest



Syralite backstamp



Red rectangular crest on American Shape cup



Cup and saucer with backstamp



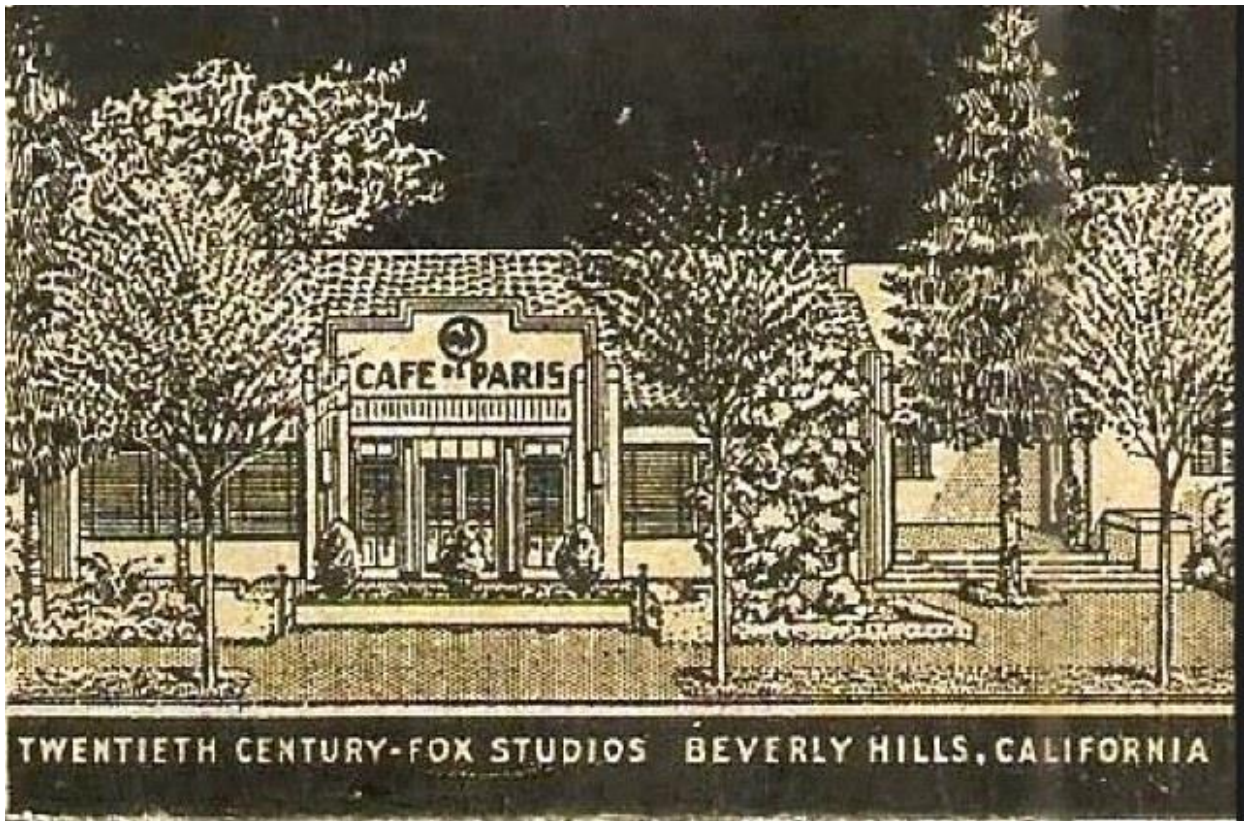
1983 Syracuse backstamp



Cup with blue version of crest



Some of the pieces in this service



Matchbook showing exterior of Cafe' De Paris (source: martinbull.com)



Shirley Temple at a Birthday party on the 20th Century Fox Studio lot commissary 1930s

Shirley Temple at a birthday party at the 20th Century Fox Studio lot commissary -1930s



DIRECTORY OF SERVICES

PRODUCTION SERVICES DEPTS

STAGES & EXTERIORS

FOOD SERVICES & SPECIAL EVENTS

POST PRODUCTION SOUND SERVICES

OTHER LINKS & RESOURCES

You are here: [Home](#) > [Food Services & Special Events](#) > [Commissary](#)

FOLLOW US



COMMISSARY

310.369.2759

- > CAFETERIA
- > COMMISSARY
- > MOE'S CAFÉ
- > THE NEWS CAFÉ
- > CATERING
- > SPECIAL EVENTS
- > STUDIO STORE

SPECIAL REQUESTS

- Please send STAFF/MOULDING CATALOG
- Please send PROD SERVICES BROCHURE
- Please check for STAGE AVAILABILITY
- Please estimate FABRICATION
- Other INQUIRY

SCORE! NEWSLETTERS

- > CURRENT
- > ARCHIVES

Call 310-FOX-INFO for further information regarding these backlot departments.

(General studio inquiries should be directed to the switchboard at 310-369-1000.)



[« previous image](#) | [next image »](#)

Built on the original site of a semi-permanent French restaurant set, the Fox Commissary has seen many changes over the years.

The enchanting combination of such outstanding seasonal menu options with the classic atmosphere featuring the original 1935 mural of Janet Gaynor, Warner Baxter and Will Rogers, creates a very stylish environment for dining or special events.

- Dining Room (reservations recommended)
- Cappuccino Bar
- Shirley Temple Private Dining Room (accommodates up to 24)
- Filming Location
- M-F Hours: Lunch 11:30a-2:00p

Fox Studio website – Commissary page

https://foxstudios-cms.foxfilm.com/food_services_special_events/commissary.html



[« previous image](#) | [next image »](#)

For a hearty, quick take-out when it's lunch on the run, or an enjoyable sitdown with the entire crew in the outdoor commissary lawn seating, the Fox Studios Cafeteria really gets cooking for breakfast and lunch. With popular daily specials at each station, your only challenge will be in making your selection!

- Grill
- Hot Food Line
- Sandwich Bar
- Salad Bar
- Beverage/Coffee/Yogurt Bar
- M-F hours: Breakfast 8:00a-9:30a, Lunch 11:00a-2:30p

Fox Studio website – Cafeteria

https://foxstudios-cms.foxfilm.com/food_services_special_events/cafeteria.html



[« previous image](#) | [next image »](#)

The most recent expansion of food services on the Fox lot is the welcome addition of Moe's Café. Moe's offers yet another choice for breakfast, lunch or even that afternoon smoothie re-charge! You'll enjoy a wide variety of options including daily specials from the vast grill menu, deli sandwich and wrap selections, soup and salad bar, grab-n-go pre-mades...and of course, the yogurt and smoothie bar. As Moe would say...Eat up, Chump!

- Location: Bldg 103, 1st floor
- M-F Hours: Breakfast 7:30a-10:00a, Breakfast Buffet 7:30a-10:30a, Lunch 11:30a-2:30p
- Made-to-order Grill
- Soup and Salad Bar
- Sandwiches and Wraps
- Bulk Boar's Head meats to-go
- Grab-n-Go Snacks

Fox Studio website - Moe's Cafe

https://foxstudios-cms.foxfilm.com/food_services_special_events/moes_caf.html