

Restaurant Ware Collectors Network®

Iconic Establishments

A series of articles about the china used by venues ranging from hotels and restaurants to burger joints and hospitals

Writing and compilation by Larry R. Paul
Editing and layout by Phillip Lord

EDGEWATER BEACH HOTEL, Chicago December 2019

The Edgewater Beach offered several dining areas. The 3-level main dining room, known as the *Marine Cafe*, seated 1,200 guests. The smaller **Colonnade Room**, named for its series of arches, was open until 2 AM. The **Yacht Club** was the hotels cocktail lounge. Post card views of this ship-theme room make it appear to have a view of the lake from a lofty position, but it was actually on the ground floor. There was a ballroom and fifteen private dining rooms, with seating capacity from 10 to 1,000. One of these was the **Black Cat Room**.

As you can imagine this hotel used a lot of china, and several patterns were used over the years. Three of the patterns are shown in the IDwiki.

The original standard pattern is a green transfer design with a stylized triple leaf or trident band, with clusters of fruit. The crest is a shield with the hotels X logo. Syracuse, Shenango, Mayer, Rosenthal, and Bauscher all made this pattern. Hinrichs supplied the Syracuse china, Marshall Field supplied the Rosenthal in 1927, and Arthur Schiller supplied the Bauscher in 1928.

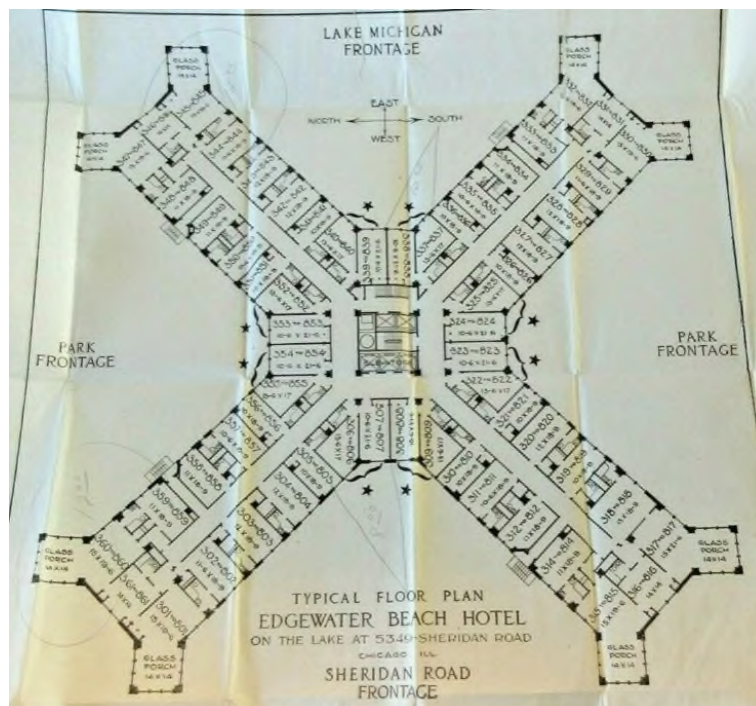
In 1926, the Edgewater Beach Hotel published *A Book of Salads: the Edgewater Beach Hotel Salad Book*, by Arnold Shircliffe. Some of the salads served on the hotel china are shown in this book. The *Book of Salads* was reprinted nine times by December 1946.

The standard pattern was still in use in 1950.

The hotel guest rooms were equipped with items in this same pattern. There are two known shapes for the dresser trays. Bauscher made one style in 1924, and Rosenthal produced an oval shape tray in 1927. The 1923 patented combination matchbook holder/ashtray, shown in the RWCN IDwiki, was made by Bauscher in 1926.

Next time, more patterns from Edgewater Beach Hotel.

EDGEWATER BEACH HOTEL, Chicago



EDGEWATER BEACH HOTEL, Chicago



The elegant dining room, which seated 1,200, had a strict dress code. You might run into such stars as Bette Davis, Babe Ruth, Tallulah Bankhead, or Nat King Cole here. *Photo Credit: Chicago History Museum*

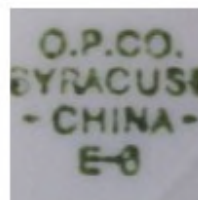
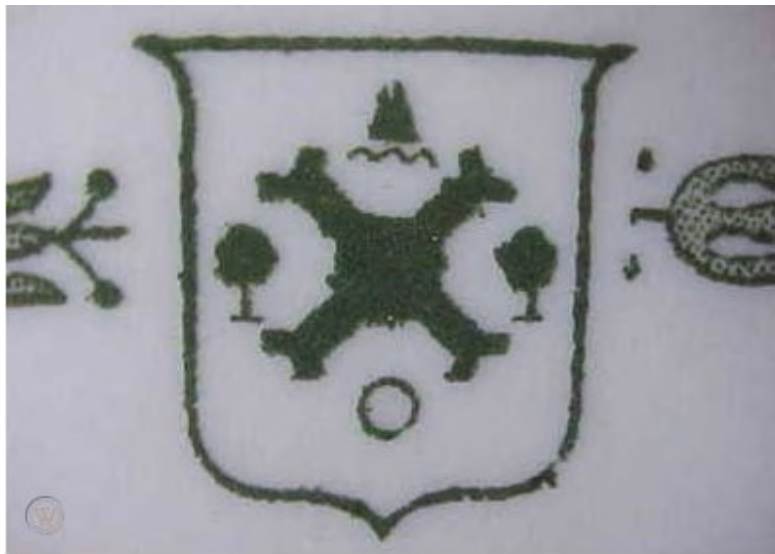
EDGEWATER BEACH HOTEL, Chicago



EDGEWATER BEACH HOTEL, Chicago



EDGEWATER BEACH HOTEL, Chicago



EDGEWATER BEACH HOTEL, Chicago



EDGEWATER BEACH HOTEL, Chicago



EDGEWATER BEACH HOTEL, Chicago



EDGEWATER BEACH HOTEL, Chicago



TOM CORYATE SALAD

Lettuce, tomato, hard-boiled eggs, pineapple, Cheddar cheese, celery, red and green peppers, anchovies



EDGEWATER BEACH HOTEL, Chicago



EDGEWATER BEACH HOTEL, Chicago



EDGEWATER BEACH HOTEL, Chicago



Panoramic View of Dining Room.