

Restaurant Ware Collectors Network®



Iconic Establishments

A series of articles about the china used by venues ranging from hotels and restaurants to burger joints and hospitals

Writing and compilation by Larry R. Paul
Editing and layout by Phillip Lord

BOSTON CITY HOSPITAL 2 October 2019

1864 Founded as a public hospital for poor patients whose care was funded by the city. By 1905, There were several buildings in the complex including a convalescent home. In 1923, 17-bed Thorndike Memorial Laboratory was established as research facility. In 1996, it was merged with Boston University Medical Center to become 514-bed Boston Medical Center.

A series of photographs taken during the Christmas season in 1912 reveals that the patients were served their meals at tables in the center of each ward. The photo of Ward W has a cart on the left with covered glass serving containers. These look like Pyrex™, but Pyrex as not introduced until 1915. The kitchen photo shows some of the china on the employee's table.

The one known Boston City Hospital china pattern was made in England by Ridgway's on Semi Vitrified ware, and supplied by Jones, McDuffee & Stratton of Boston. The Ridgway bow and arrow quiver mark was in use around 1891. The crest, placed in the center of the well, is a circle with an illustration of Boston harbor, "The Boston City Hospital 1864" encircles the illustration. The rim is filled with a reddish-brown floral transfer design.

Information sources. New York Academy of Medicine website, www.nyam.org/, Dec. 18, 2013 article by Rebecca Pou. Boston Medical center website, www.bmc.org/. eBay.com, WorthPoint.com AOL image search. Google image search.



Early view of 1864 building with flanking additions



Postcard view, showing more additions to the rear

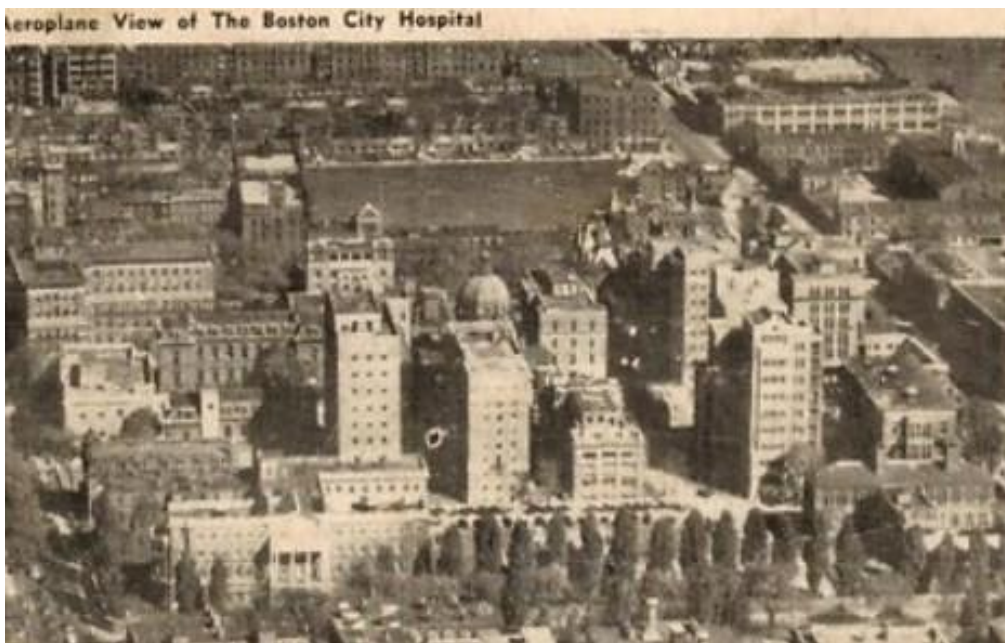


CONVALESCENT HOME. 1890.

Convalescent Home



1929 aerial view



1937 aerial view



The Boston City Hospital
Christmas 1912
Ward W.

1912 Christmas in Ward W, with glass serving bowls



The Boston City Hospital
Christmas 1912
Ward G.

Ward G with table in center of room



The Boston City Hospital
Christmas 1912
Kitchen.

1912 kitchen, with table set for Christmas meal



Ridgway's and Jones, McDuffee & Stratton backstamps



Circular crest in center of well



THE BOSTON CITY HOSPITAL,

HARRISON AVENUE, OPP. WORCESTER SQUARE,

Boston, March 23, 1899. 189

C. H. M. ROWE, M.D.,
SUPT. AND RESIDENT PHYSICIAN.

Walter C. Rowe, M. D.,

Concord, N. H.

Dear Sir:--

Your application for hospital work has been received. Will you kindly specify what kind of work in the Out Patient you desire, whether medical or surgical. Also please state when you wish to begin work, and how long you desire to remain, giving your age and general educational advantages, with two references.

1890s letterhead with circle logo



4 7/16" x 3 3/4" rectangular bowl



Bowl backstamp



4" x 10 1/2" rectangular serving platter



Platter backstamp



Crested silver flatware

The following comment was posted in response to this article.

Sherri Harris

I always thought there may be a chance that my milk pitcher was from Boston City Hospital although it does not spell it out.

