

Restaurant Ware Collectors Network®

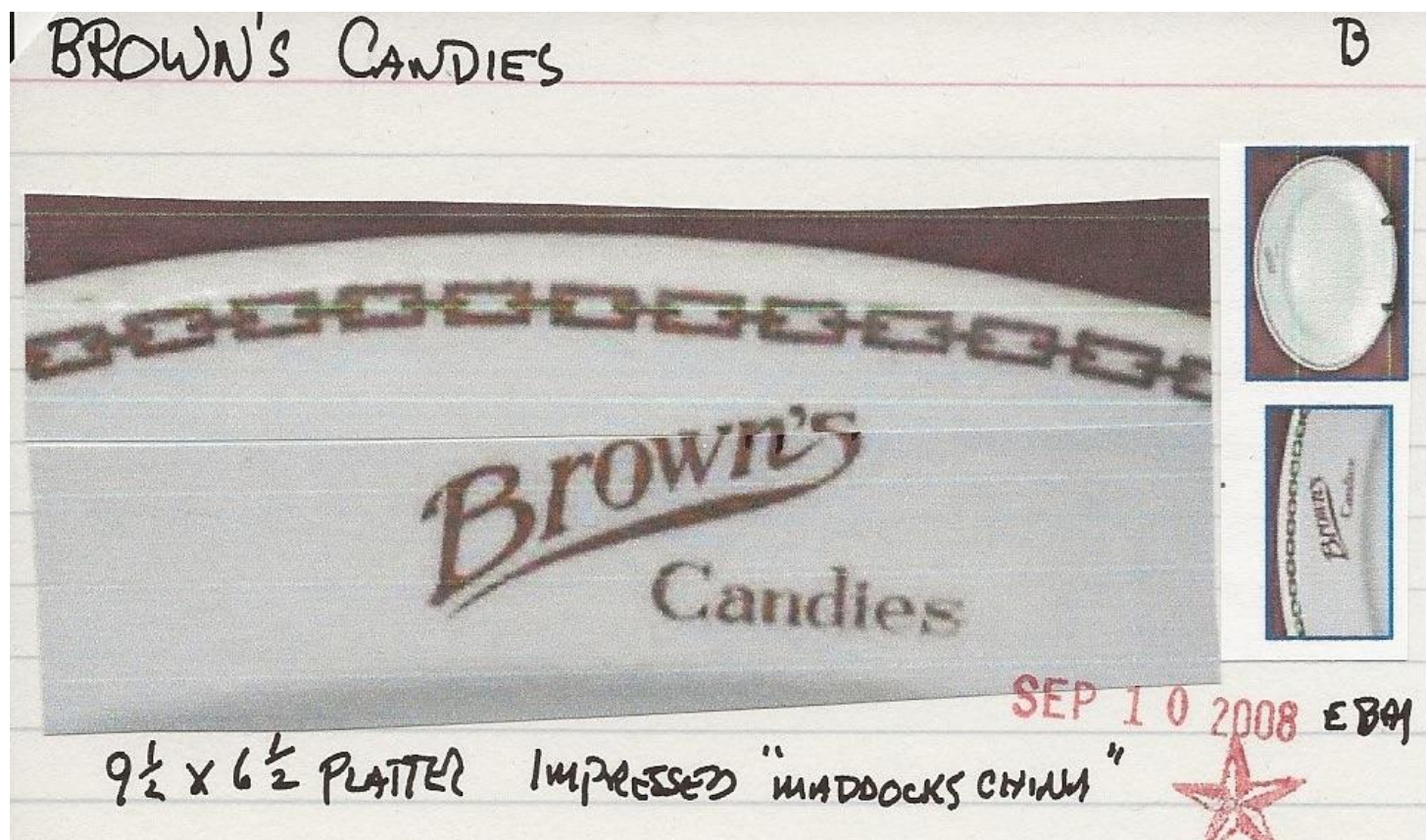
Iconic Establishments

A series of articles about the china used by venues ranging from hotels and restaurants to burger joints and hospitals

Writing and compilation by Larry R. Paul
Editing and layout by Phillip Lord

Brown's Candies – Detroit, Michigan
[24 November 2019

Every once in a while, scrolling through the latest of the 130,000 menus on eBay pays off. An early 1900s menu from Brown's Candies in Detroit that appeared yesterday is the smoking gun that identified an early Maddock pattern that has been in my unidentified customer file for 11 years. It not only has the matching logo, but also contains the street address. The sellers listing provided the Detroit location. With that information, I was able to find photographs of the Woodward Avenue and the Lafayette Street locations of Brown's Candies shops on the Detroit Historical Society website. The menu lists both food and ice cream items. There was a Brown's Creamery in Detroit, which may or may not have been the source of the milk for the ice cream they served.



Brown's
1259 Woodward Ave.

VITAMINES

Are food substances which are absolutely necessary to keep the body in good health. Pure Milk carries a higher percentage of Vitamines than any other food.

Drink **GUERNSEY MILK** and you have the best.

DRINK MILK AT EVERY MEAL

Drink it slowly. Sip it.

Sparkling eyes — clear skin — good teeth — ruddy cheeks — snap — pep — the joy of life belong to all who drink plenty of Brown's good fresh Guernsey milk.

Guernsey milk makes children big and strong and husky. It makes boys and girls grow into healthy and happy men and women.

MILK THE CHEAPEST FOOD

The following table, compiled by specialists of the Department of Agriculture, shows the quantities of various foods needed to supply as much energy as one quart of milk:

ENERGY

- 1 quart of milk is equal to—
 11 ounces of sirloin steak
 12 ounces of round steak
 8½ eggs
 10.7 ounces of fowl

GUERNSEY MILK IS SUPREME

Value of one quart of milk of given composition as calculated by Professors W. A. Stocking and J. D. Brew of New York State College of Agriculture.

Average milk tests about 3.5 per cent. Guernsey milk tests 5 per cent. Guernsey milk not only excels common milk in quality, color and flavor, but it actually excels in the dollars and cents factor—food value.

TOASTS and CEREALS

Toast dry and buttered (10 minutes).....	15
French Toast (10 minutes).....	25
Shredded Wheat Biscuit with Cream.....	20
Bowl Half and Half with Crackers.....	25
One (1) Roll and Butter.....	05
Milk Toast (10 minutes).....	25
Grape Nuts with Cream.....	20
Corn Flakes with Cream.....	20
Bowl of Milk with Crackers.....	20
Coffee Cake	10
Hot Cakes with Maple Syrup.....	20

EGGS TO ORDER

(15 Minutes)

Ham and Eggs.....	60	French Omelet with Jelly.....	40
Eggs, Boiled or Fried (2).....	35	Spanish Omelet.....	40
Poached Eggs on Toast.....	40	Fried Ham.....	40
Scrambled	35	Ham Omelet.....	45
		Plain Omelet.....	40

SALADS

Chicken	60	Egg	25
Salmon	30	Potato	20

Special Corned Beef Hash (10 min.) . . .35c

SANDWICHES

Ham	20	Cheese	20
Tongue	20	Salmon	20
Chicken	25	French Sardine.....	20
Our Brown's Special 15 No. 193 Special.....	15	Lettuce	15
			35

SPECIAL SANDWICHES

The following are made to order and require from 5 to 10 minutes and are served from 11:00 A. M. to 11:30 P. M.

Brown's Special Club Sandwich.....	50
Lettuce and Egg.....	25
Walnut and Celery.....	25
Chicken Salad Sandwich.....	35
Ham and Pimento Sandwich.....	20
Chopped Chicken	35

Roll and Butter served with order, 5c extra

TAKE HOME A QUART OF OUR ICE CREAM IN SANITARY CONTAINER

SUNDAES—All Flavors

ALL SUNDAES Made with Vanilla Ice Cream

Brown's Special.....30	Fruit Salad30
Butterscotch30	Hawaiian Pineapple.30
Burnt Almond	Ice Cream Sandwich 25
Marshmallow.....30	Lover's Delight35
Banana Split30	Merry Widow30
Club Sandwich.....30	Maple Nut30
Chocolate Fudge	Nabisco30
(Hot or Cold)....30	Opera30
Coney Island.....30	Peach Melba30
Chop Suey30	Pineapple25
Caramel Nut30	Red Raspberry25
Caramel Marshmallow	Strawberry25
Nut30	Society (all flavors).30
Cherry25	Tropical30
Fudge30	Waldorf30

ICE CREAM SODA, Any Flavor... 20c

Chocolate	Pineapple	Orange
Vanilla	Cherry	Lemon
Wild Cherry	Strawberry	Sarsaparilla
Raspberry	Maple	Coffee

PARFAITS

Macaroon30	Pineapple30
Strawberry30	Cafe au Parfait.....30
Fig Nut30	Chocolate30

We Make All Our Ice Cream

Chocolate.....25	Vanilla.....25
Strawberry.....25	

FRENCH ICE CREAM 30c

Our French Ice Cream is made from only Pure Guernsey Cream and Strictly Fresh Eggs. Try our VANILLA WAFERS with Ice Cream

PHOSPHATES 10c

Lemon made from	Orange made from
fresh fruit10	fresh fruit10
Cherry10	Lime10

COLD DRINKS

Lemonade20	Vernor's Ginger Ale.10
Fresh Orangeade.....20	Grape Lemonade....25
Iced Tea15	Buttermilk10
Malted Milk, Plain,	Sweet Cream Soda,
any flavor20	any flavor20
Chocolate Sweet	White Rock
Cream25	Lemonade35
Fresh Limeade20	White Rock Splits..20
Fruit Lemonade25	Grape Juice Indiv'l..25
Seltzer Lemonade....20	Genuine Coca Cola..10

FANCY MIXED DRINKS

Brown's Freeze20	Arctic Fluff25
Mint Freeze20	Grape Cobbler25
Irish Iceberg20	Detroit Fizz20
Lime Freeze20	Frosted Chocolate...20
Chocolate Cream	Frosted Coffee20
Puff25	Root Beer Cream
Woodward Flip25	Float20
Boston Flip25	

FRAPPES 20c

Lemon	Strawberry	Chocolate
Orange	Pineapple	Cherry
	Vanilla	Maple

FANCY and LAYER CAKES

Chocolate15	Vanilla Wafers10
Cocoanut15	Assorted Cakes10
Walnut15	Macaroons10
Lady Baltimore15	Adoras10
Layer Cake a la mode.....25	

EGG DRINKS—All Flavors 25c

Made from Pure Cream and Strictly Fresh Eggs from our own farm

Egg Chocolate	Egg Lemonade
Egg Nogg	Egg Coffee
Egg Cherry	Egg Flip
	Egg Malted Milk

SPECIAL EGG PHOSPHATE

PUNCHES

Floradora	25	Oriental Ruby	25
Turkish	25	Snow Ball	25
Fruit	25		

HOT DRINKS

Colonial Blend Coffee	10
Hot Milk	10
Instant Postum	10
Formosa Oolong Tea	10
Black or Green Tea, per pot	15
Bensdorp's Royal Dutch Chocolate, Whipped Cream, per cup	15
Cream Tomato Bouillon, with Wafers	20
Beef Bouillon, with Wafers	20
Malted Milk (any flavor)	25
Lemonade	20

**Brown's
Candies**

**If Better Candy than ours could
be made, we would make it.**

**We make our own Ice Cream,
and guarantee it strictly pure.**

Vanilla, 40c pint; 70c quart.
Chocolate or Strawberry, 45c pint; 80c qt.
Delicious French Ice Cream, 45c pt.; 80c qt.

**CANDIES
PAR
EXCELLENCE**

The girls who want the best candy to be had at any price are in increasing numbers buying their candy at Brown's.

The young man who wants to be sure that the candies which he leaves at the home of the fair sex is one which will not only satisfy but delight, and continue to delight, is one of the most enthusiastic customers of Brown's.

There is no secret back of this—the answer is found in the fact that at Brown's Candy Shop you can get the candy which you want, and you can be sure that the material, making and entire surroundings—everything is pure, fresh and unadulterated.



