

Restaurant Ware Collectors Network®

Iconic Establishments

A series of articles about the china used by venues ranging from hotels and restaurants to burger joints and hospitals

Writing and compilation by Larry R. Paul
Editing and layout by Phillip Lord

TERRACE PLAZA HOTEL

Cincinnati, Ohio

May 3, 2020

In 1946, Cincinnati real estate developer, John J. Emery, commissioned the architectural firm of Skidmore, Owings & Merrill (SOM), to design a new hotel for him. He chose them because they had in fact, never designed a hotel, and Emery wanted something different and apart from the usual hotel. What he got when the Terrace Plaza Hotel opened on July 19, 1948, was certainly a different concept, a hotel designed in the International Style. The hotel entrance at the ground floor level only led to the elevators. The lobby was located on the 8th floor, while retail stores and the parking garage were on the floors below.

SOM designer, Nathalie de Blois, was head of the team responsible for creating much of the interior, including the circular 56-seat **Gourmet Restaurant** on the 20th floor. They commissioned artist, Joan Miro, to create a 30' wall mural to decorate this restaurant. A rooster logo, designed specifically for this location, was used on service plates, menus, the silver holloware, and on the elevator doors leading to the restaurant.

The coupe-shape 10½" service plate was made by Scammell, and has a solid black overall glaze. The rooster logo and the rim line are coin gold, applied overglaze. Because the restaurant had such a small seating capacity, it is possible no more than 10 dozen service plates were made. This is the only one I have encountered in more than 40 years of searching for pieces made by the Scammell China Co. The rest of the service used in the Gourmet Restaurant is crested, with the rooster logo in black. Scammell was the original maker, but on WorthPoint.com, there is a 9 1/8" plate and a saucer by Sterling, which would have been made after Scammell closed.

The main dining room for the Terrace Plaza was the 250-seat **Skyline Dining Room**, that included a mural by Saul Steinberg. The service plates feature the hotel's "tp" logo in the center, and what appears on a postcard view, to be a green and gold border. I'm hoping these service plates were a Scammell creation, but have yet so find an example. The rest of the china service is plain white except for the "tp" crest in gray. This pattern is shown and described in the RWCN IDwiki. Shenango is the known maker.

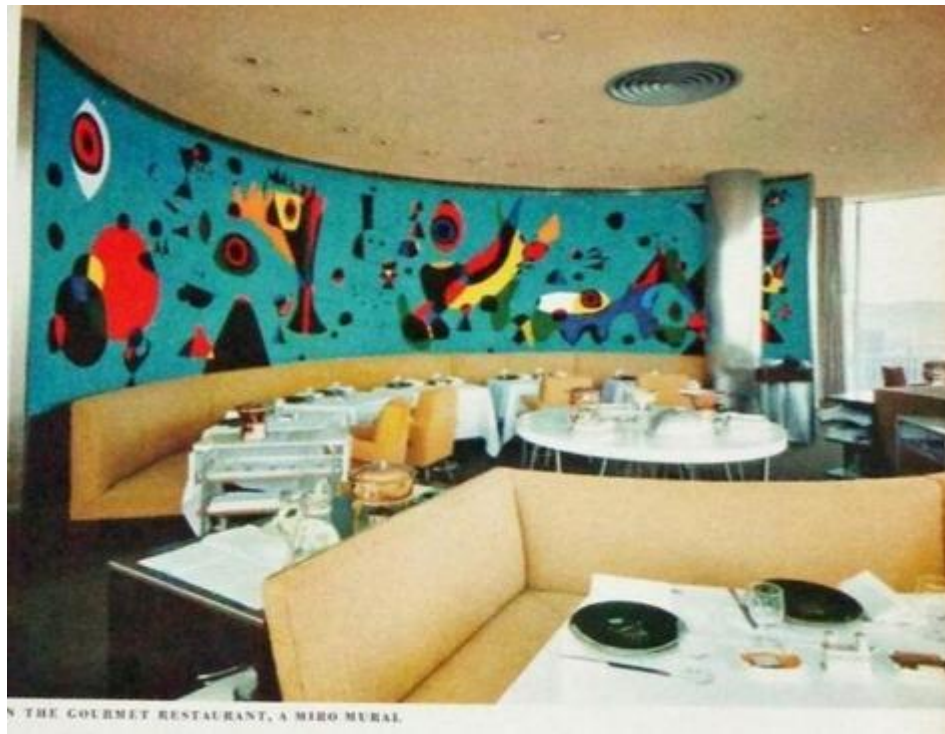
In 1957, Hilton Hotels took over the operation and the hotel name was changed to Terrace Hilton. By 1977, the murals had been removed, and the Gourmet Restaurant had been redecorated with wood paneled walls, Austrian-style window valances and a chandelier. The service plates were still black, but the rim was the traditional flat style.

On October 31, 2008, the hotel closed and it has been vacant since then. Multiple restoration and reuse plans for the building have been presented, but thus far nothing, has taken place.

Information resources: RWCN IDwiki; Skidmore, Owings & Merrill, website, <https://www.som.com/projects/terrace-plaza-hotel>; eBay.com; WorthPoint, <https://worthpoint.com>; AOL, and Google image searches.



Terrace Hotel exterior



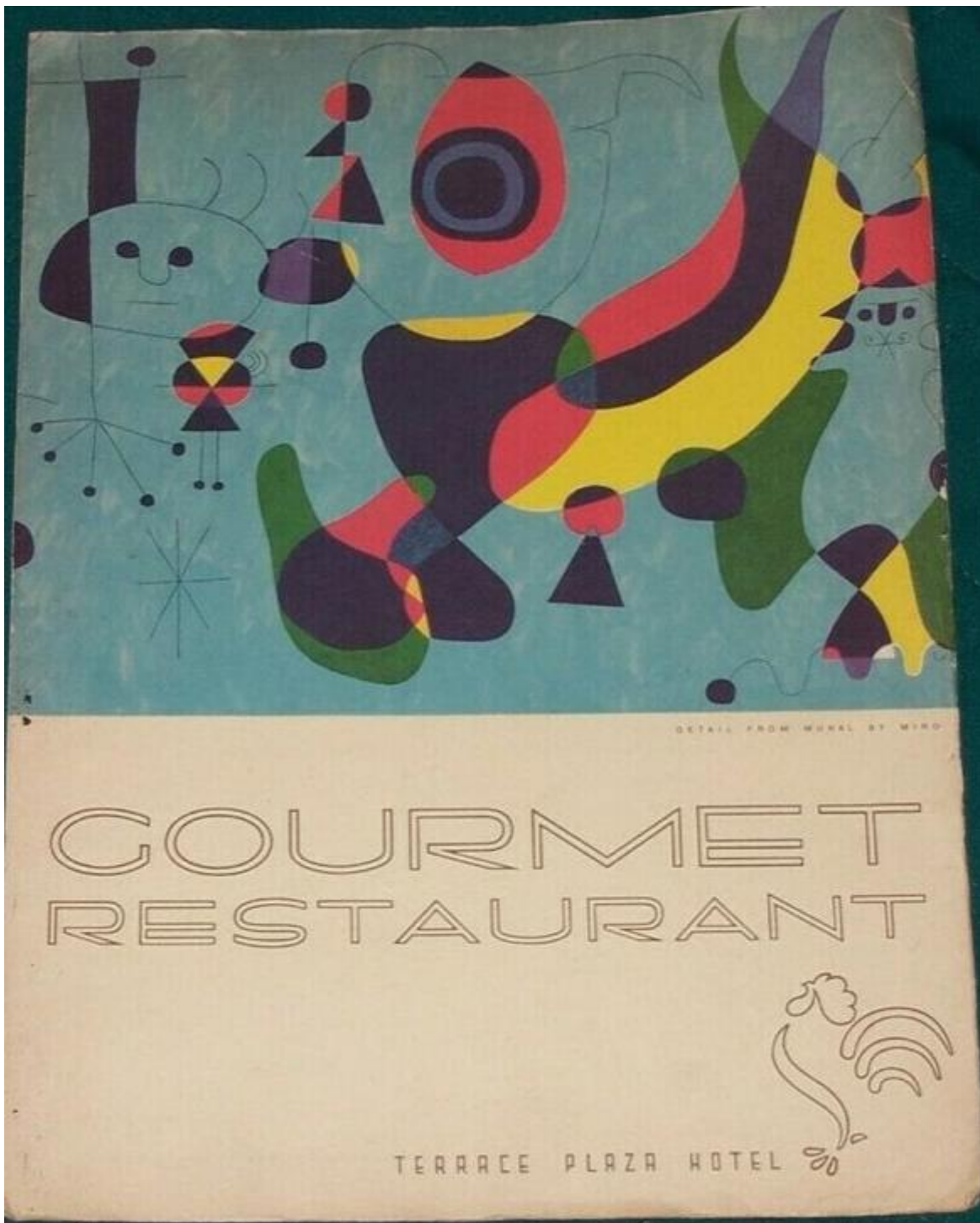
Gourmet Restaurant with Jean Miro mural and service plates



View with service plates on table with rooster logo visible



Elevator door with the rooster logo



Menu cover with the rooster logo and detail from the Miro mural



The Scammell coupe-shape 10 1/2" service plate with coin gold logo



Rooster logo



Backstamp



Saucer by Sterling China with rooster logo



Backstamp on Sterling China saucer



Postcard view of **Skyline Dining Room** with service plates



Skyline Dining Room wall mural by Saul Steinberg, with service plates on tables



Skyline Dining Room with ashtrays (see IDwiki) and sugar bowls



Skyline Dining Room “tp” crested cup and saucer, by Shenango



Skyline Dining Room “tp” crested platter, by Shenango



Backstamp on Shenango platter



1977 view of renovated **Gourmet Restaurant** with flat rim black service plates