

## Carr China from Joy Shaffer Bachman's Estate at the West Virginia State Museum

Wheeler H. Bachman and Edith Carr Bachman had one son, Wheeler Carr Bachman, born in 1911. In 1947 at age 36, he married Edna Joy Shaffer (born in 1917 and known as Joy), in what has been suggested was an arranged marriage. He had been president of the company since the early Forties.

The couple was childless and lived apart for most of their marriage, with him residing in Wheeling, and Joy in Grafton. His mother, Edith Carr Bachman, died in 1948, the year following their marriage.

Wheeler Carr Bachman died in 1975.

Joy died from Alzheimer's Disease in 2004. Many years before, she and two of her sisters approached the West Virginia State Museum in Charleston with the hope that the museum would accept pieces from her collection upon her death. An agreement was eventually reached with Jim Mitchell, the curator of the museum at that time, and when she died the collection was transferred from her home to Charleston.

The most unusual pieces in the collection are 360 chrome-plated copper decorating cylinders from both the Carr and Warwick plants. (Carr acquired Warwick in 1951.) Follow this link to see a video of Mitchell, who died in 2024, talking about the museum's Carr collection and especially the decorating cylinders:

<https://www.youtube.com/watch?v=puSyU9FxfJE>

Joy kept meticulous notebooks about the plant, and she also attached notes to many of the pieces that she brought home from the plant.

We visited with Mitchell in Fall 2011 and took photos of most of the china that was deeded to the museum from Joy's collection. The notes are still attached to many of the pieces, written in Joy's hand.

Photos from our visit are documented below. Where possible, we've included images large enough to be able to read Joy's notes clearly.

-Susan and Ed Phillips

Carr China Company  
China from Joy Shaffer Bachman's estate at W.V. State Museum

## 4-H Featherweight



For more info: <https://rwcn-idwiki-2.restaurantwarecollectors.com/content/4-h/>

Carr China Company  
China from Joy Shaffer Bachman's estate at W.V. State Museum

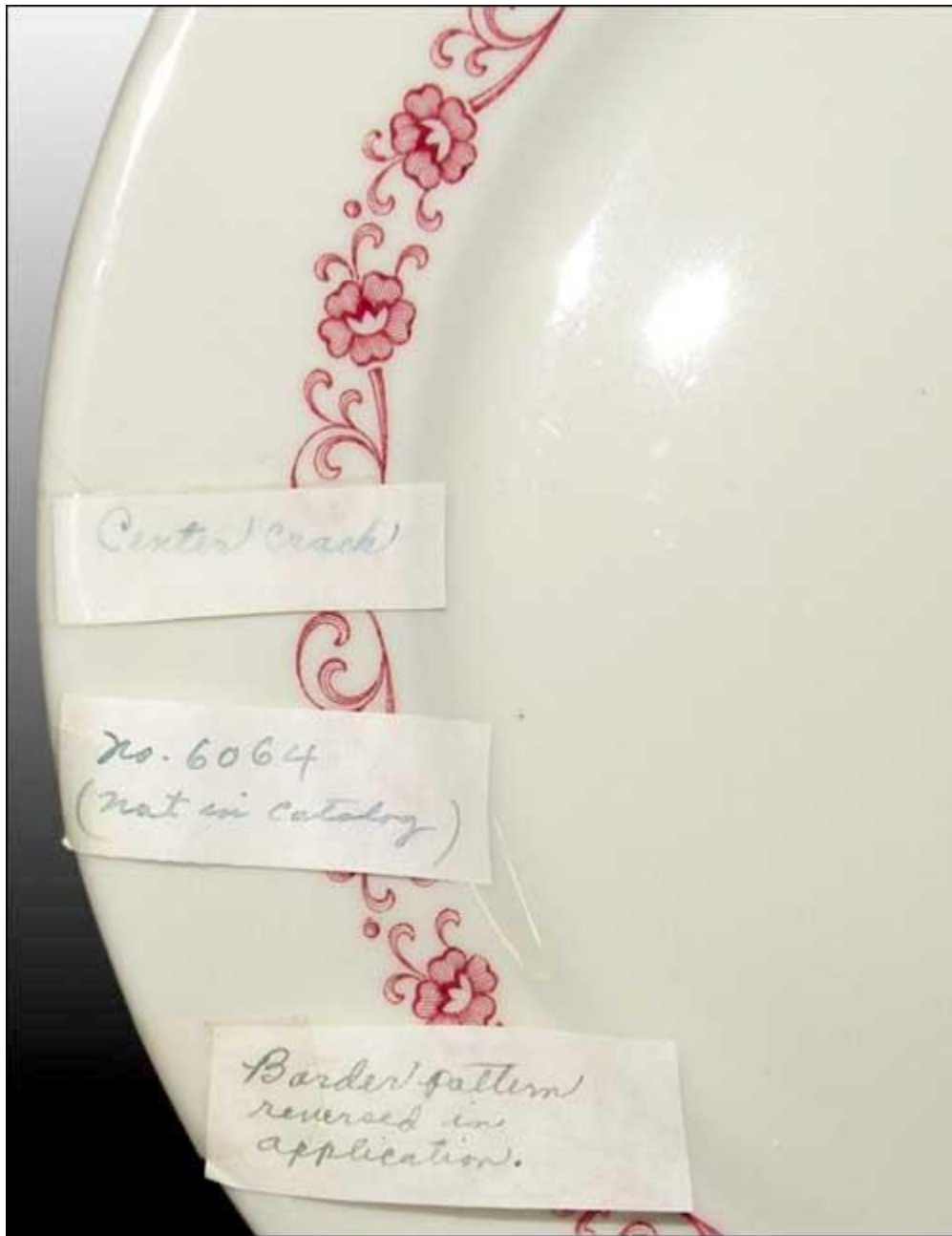
Derby pattern



Carr China Company  
China from Joy Shaffer Bachman's estate at W.V. State Museum

#6064





Carr China Company  
China from Joy Shaffer Bachman's estate at W.V. State Museum  
#6064 cont'd





Carr China Company  
China from Joy Shaffer Bachman's estate at W.V. State Museum  
#6064 cont'd



Carr China Company  
China from Joy Shaffer Bachman's estate at W.V. State Museum

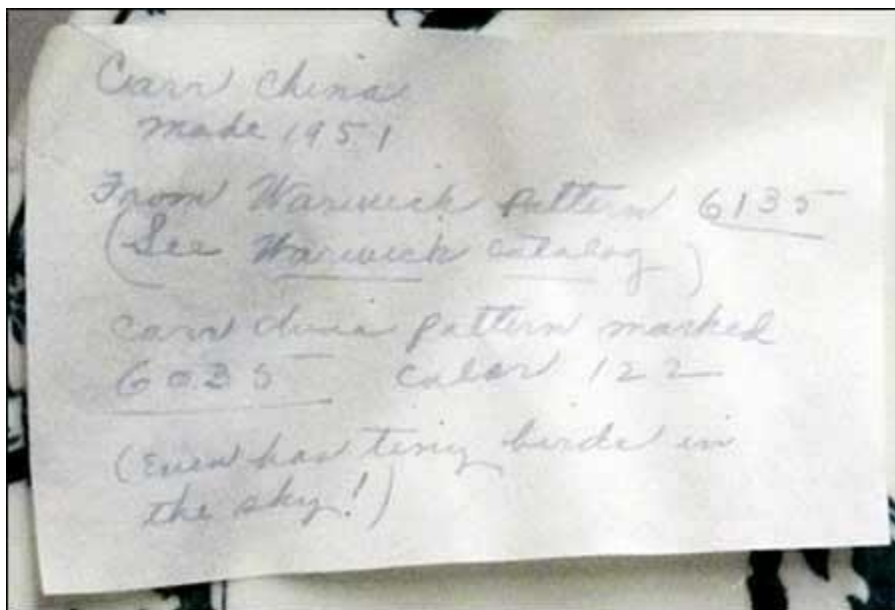
## Pattern #6135 (or #6035)



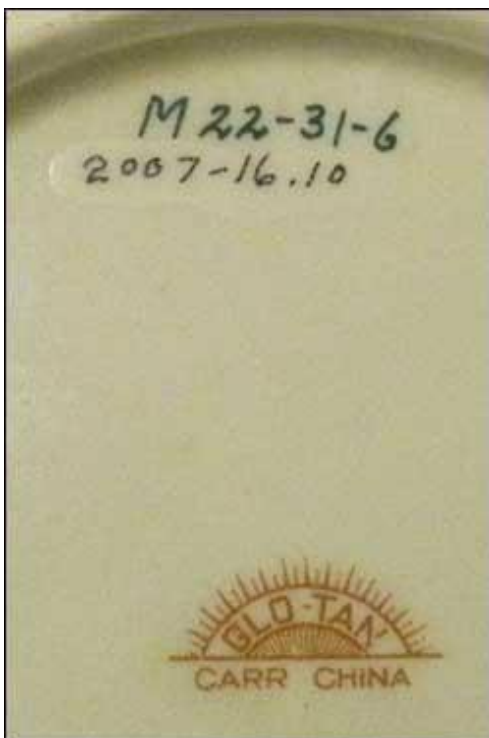
For more info: <https://rwc-idwiki-2.restaurantwarecollectors.com/content/carr-print-pattern-6135/>



Carr China Company  
China from Joy Shaffer Bachman's estate at W.V. State Museum  
#6135 (or #6130) cont'd



Mattson Design: M22-31-6



(The number 2007-16.10 is the museum's archive number.)

Vitrified Advertising Display



Vitrified Advertising Display



### Color Charts



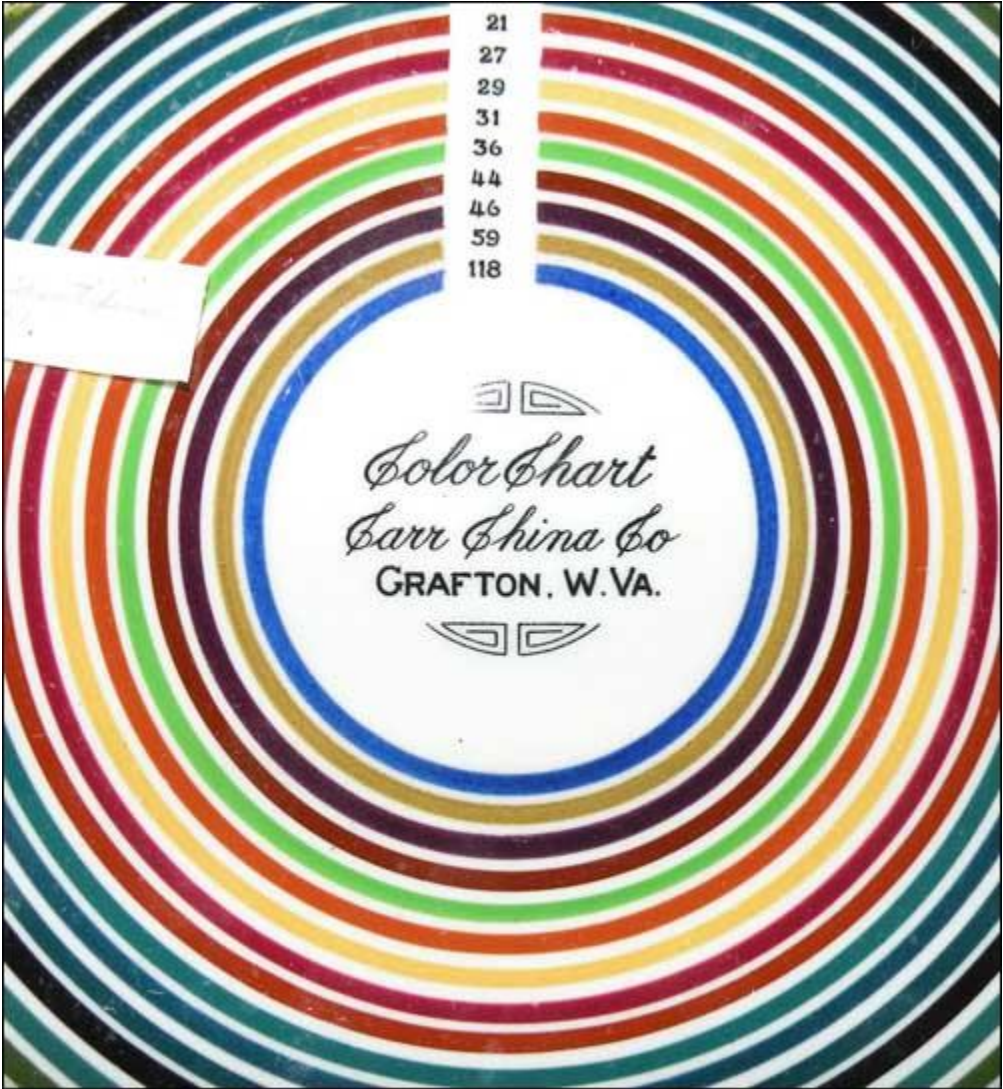
For more info:

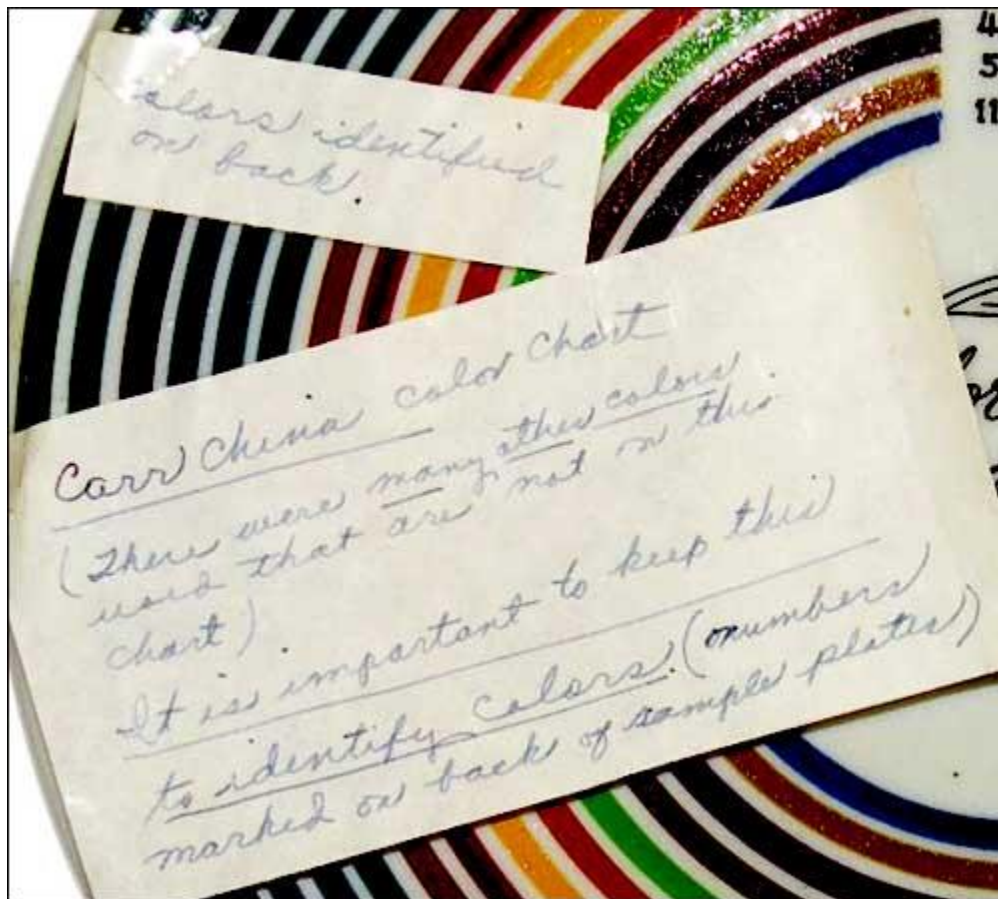
<https://rwc-idwiki-2.restaurantwarecollectors.com/content/carr-color-sample-plate-2/>

1	— OLIVE GREEN
2	— BLUE GREEN
6	— BLACK
8	— FRENCH GREEN
15	— ROYAL BLUE
18	— CANTON GREEN
21	— CHESTNUT BROWN
27	— CRIMSON
29	— DEEP YELLOW
31	— GOLDEN BROWN
36	— VICTORIA GREEN
44	— CLOISTER BROWN
46	— PURPLE
59	— OLD GOLD
118	— ULTRA BLUE



Carr China Company  
China from Joy Shaffer Bachman's estate at W.V. State Museum  
Color Charts cont'd





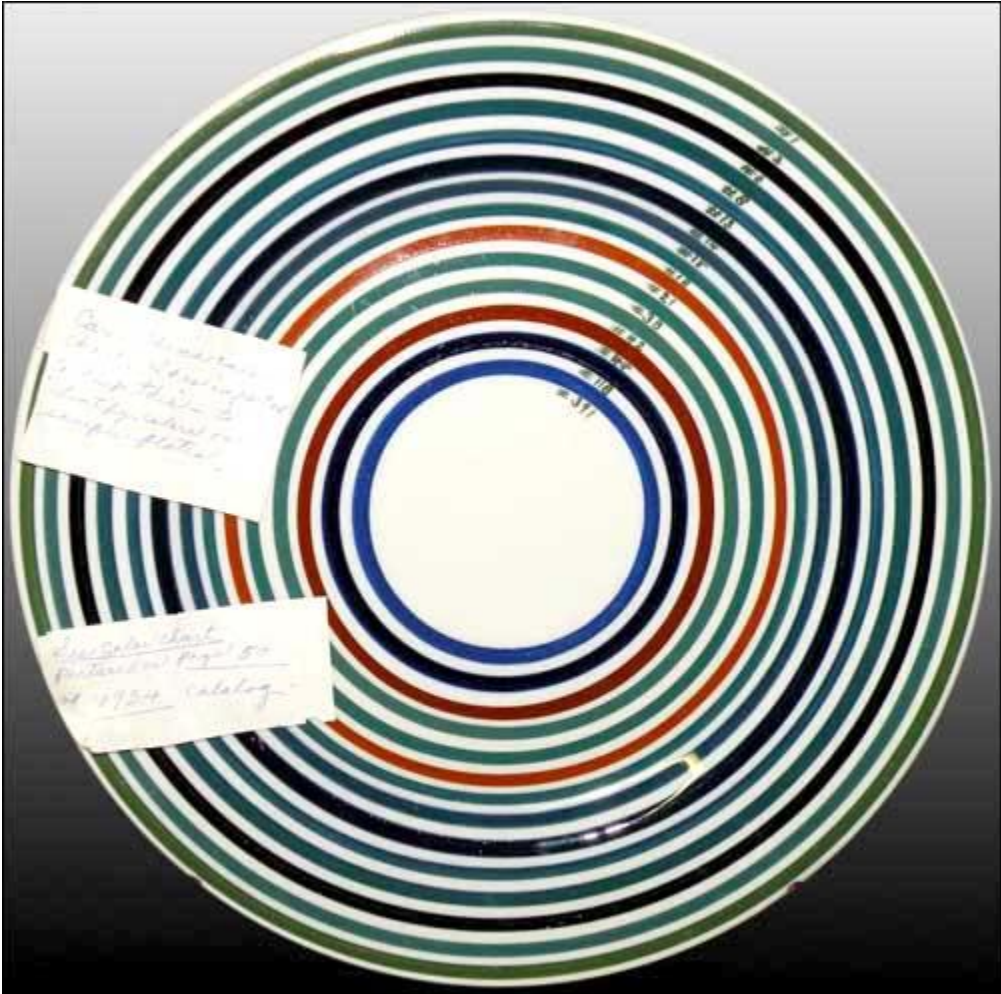


Carr China Company  
China from Joy Shaffer Bachman's estate at W.V. State Museum  
Color Charts cont'd



CROALL  
84Y-8003  
" 8008  
" 21A  
" 3216  
" 12  
" 4211  
" 350  
" 3732

Carr China Company  
China from Joy Shaffer Bachman's estate at W.V. State Museum  
Color Charts cont'd

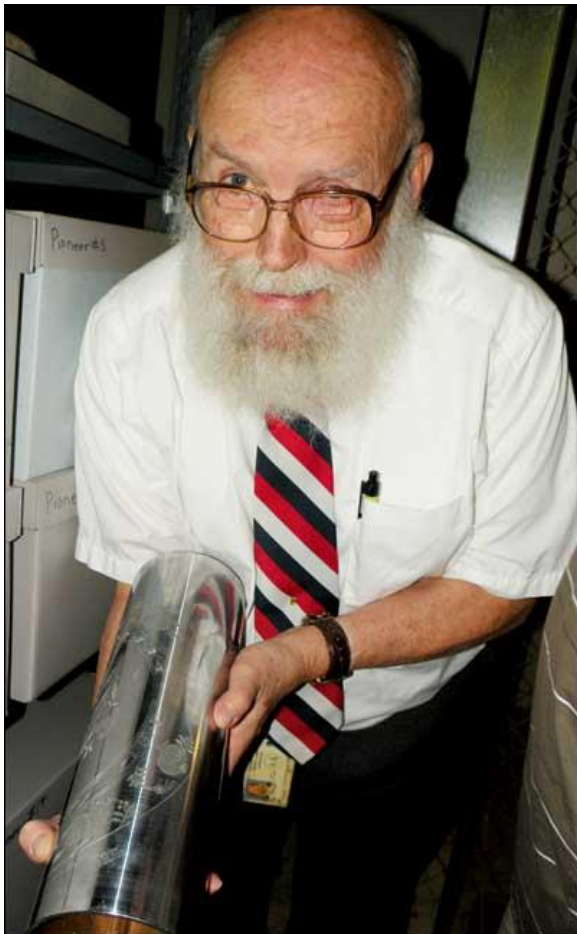


## Pattern Cylinders

The late West Virginia State Museum Curator Jim Mitchell holds one of the 360 chrome-plated copper decorating cylinders from Joy Bachman's collection of both Carr and Warwick cylinders.

Mitchell assumed the process was similar to that used by Spode, of which he was very familiar. In the Spode process, plates were inked with a brayer and then a piece of rice paper was placed over it, and it was put through a press. The paper was pulled off and cut apart.

Then the ware was coated with mucilage, and the paper was applied by a decorator. Then the ware was washed, the rice paper came off, but the design stayed. (The design would have been printed in reverse and applied upside down on the ware.)





Carr China Company  
China from Joy Shaffer Bachman's estate at W.V. State Museum  
Pattern Cylinders cont'd



Carr China Company  
China from Joy Shaffer Bachman's estate at W.V. State Museum  
Pattern Cylinders cont'd



Carr China Company  
China from Joy Shaffer Bachman's estate at W.V. State Museum

## Ellwood pattern #7000

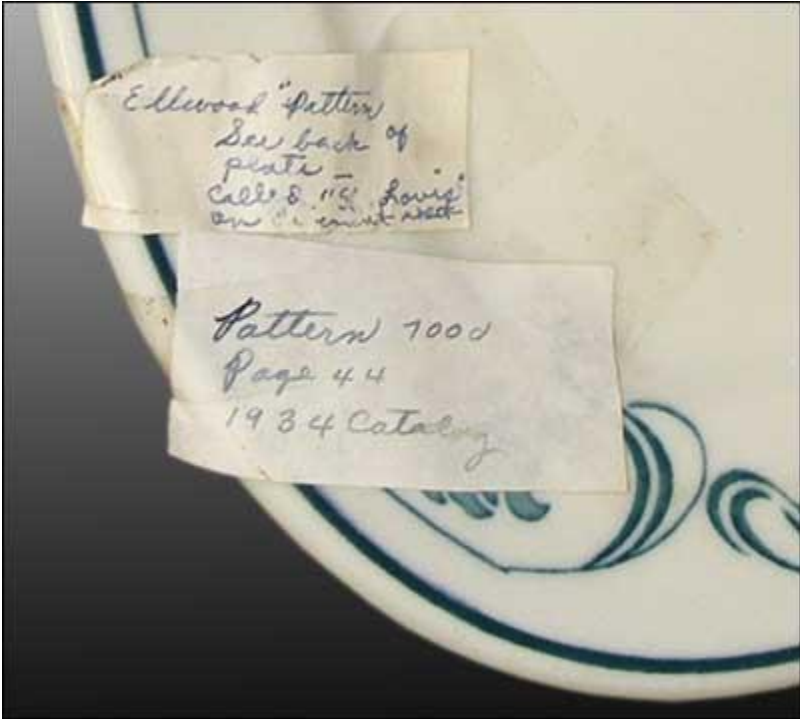


For more info: <https://rwc-idwiki-2.restaurantwarecollectors.com/content/ellwood-2/>

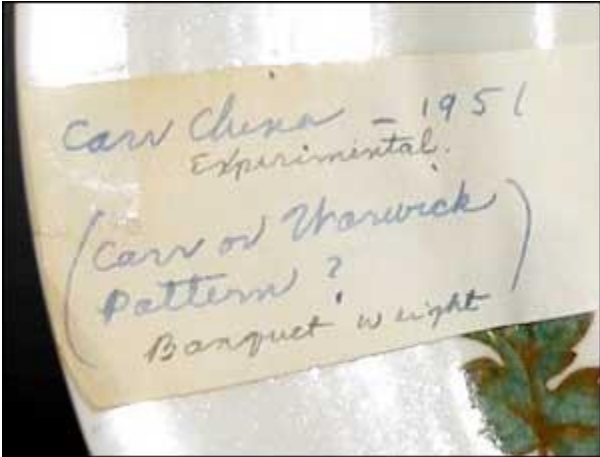




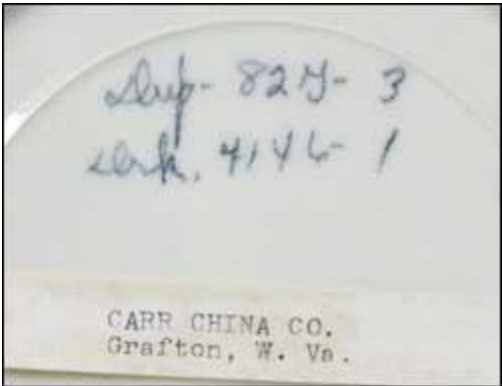
Carr China Company  
China from Joy Shaffer Bachman's estate at W.V. State Museum  
Ellwood pattern cont'd



# Experimental Design



Factory Trial



dep- 824- 3  
ser. 4146- 1

CARR CHINA CO.  
Grafton, W. Va.

Carr China Company  
China from Joy Shaffer Bachman's estate at W.V. State Museum  
Factory Trial cont'd



*Carr China*  
*no back stamp*  
*(Factory trial)*

Carr China Company  
China from Joy Shaffer Bachman's estate at W.V. State Museum

### Herman's Sea Food (Seafood)



Carr China Company  
China from Joy Shaffer Bachman's estate at W.V. State Museum  
Herman's Sea Food (Seafood) cont'd





Carr China Company  
China from Joy Shaffer Bachman's estate at W.V. State Museum

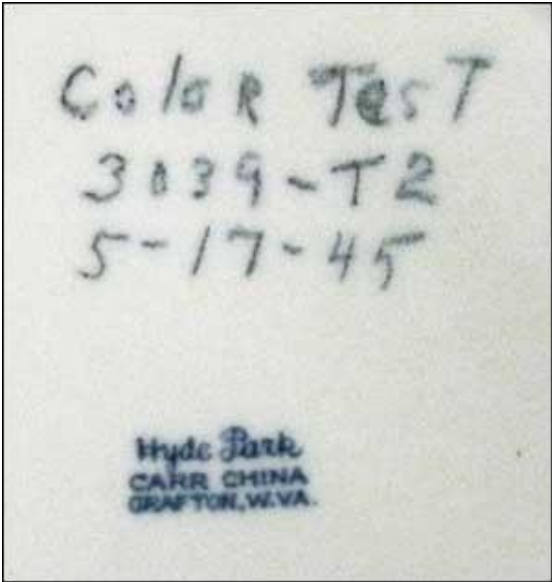
## Hyde Park #6039



For more info: <https://rcn-idwiki-2.restaurantwarecollectors.com/content/hyde-park-2/>



Carr China Company  
China from Joy Shaffer Bachman's estate at W.V. State Museum  
Hyde Park cont'd



## Ivydale



Joy notes on the top plate (commercial weight) that it might have been a Warwick pattern. Below is the same pattern on banquet weight.

For more info: <https://rcn-idwiki-2.restaurantwarecollectors.com/content/ivydale/>

Carr China Company  
China from Joy Shaffer Bachman's estate at W.V. State Museum  
Ivydale cont'd





Carr China Company  
China from Joy Shaffer Bachman's estate at W.V. State Museum

## Kangaroo (Pick-Melbourne Hotel St. Louis)



Now identified as having seen exclusive use at the Pick-Melbourne Hotel in St. Louis, there's a question if this design ever saw production.

For more info: <https://rwc-idwiki-2.restaurantwarecollectors.com/content/kangaroom-melbourne-hotel-st-louis/>

Carr China Company  
China from Joy Shaffer Bachman's estate at W.V. State Museum  
Kangaroo cont'd



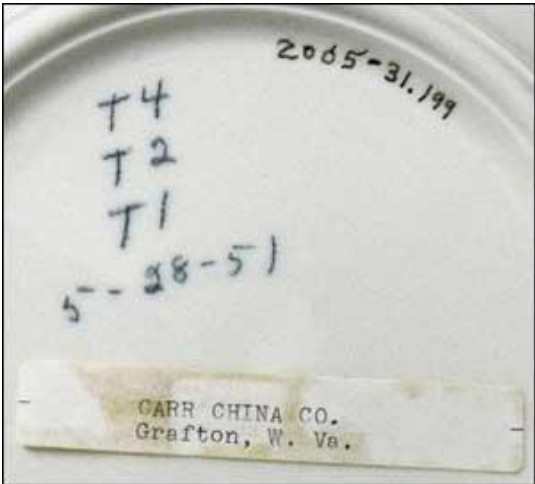


Carr China Company  
China from Joy Shaffer Bachman's estate at W.V. State Museum

Line Sample



*Carr China  
Lockett  
factory color sample*



T4  
T2  
T1  
5-28-51  
2065-31.199

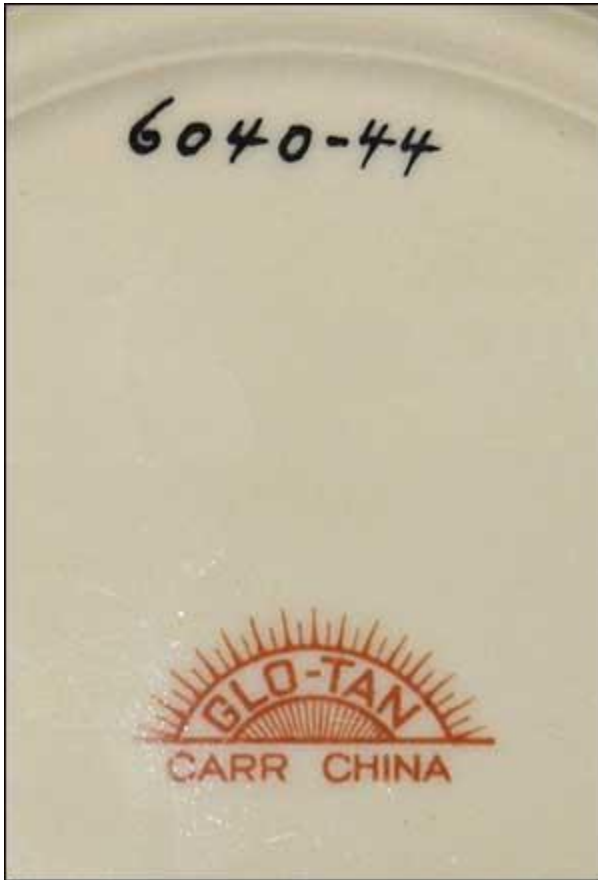
CARR CHINA CO.  
Grafton, W. Va.

Carr China Company  
China from Joy Shaffer Bachman's estate at W.V. State Museum

Logan pattern #6040



Carr China Company  
China from Joy Shaffer Bachman's estate at W.V. State Museum  
Logan cont'd



For more info: <https://rwc-idwiki-2.restaurantwarecollectors.com/content/logan-2/>

## Virginia, Madeline and Rose #6065 patterns experiment



This is quite a delightful cup, backstamped Madeline but featuring at least three patterns: Virginia on top of Madeline in brown, and inside the cup, the rose pattern #6065.

Note that the pattern name is spelled with an ending "e." At least one Carr catalog contains a typo and refers to this pattern as Madelin.

Carr China Company  
China from Joy Shaffer Bachman's estate at W.V. State Museum  
Virginia, Madeline and Rose patterns cont'd





Mattson pattern 34



A Mattson sample plate with Oriental influence depicting Mt. Fuji, the volcanic mountain that is a national symbol of Japan.

Carr China Company  
China from Joy Shaffer Bachman's estate at W.V. State Museum

Mattson pattern 72



Carr China Company  
China from Joy Shaffer Bachman's estate at W.V. State Museum

Mattson pattern 98

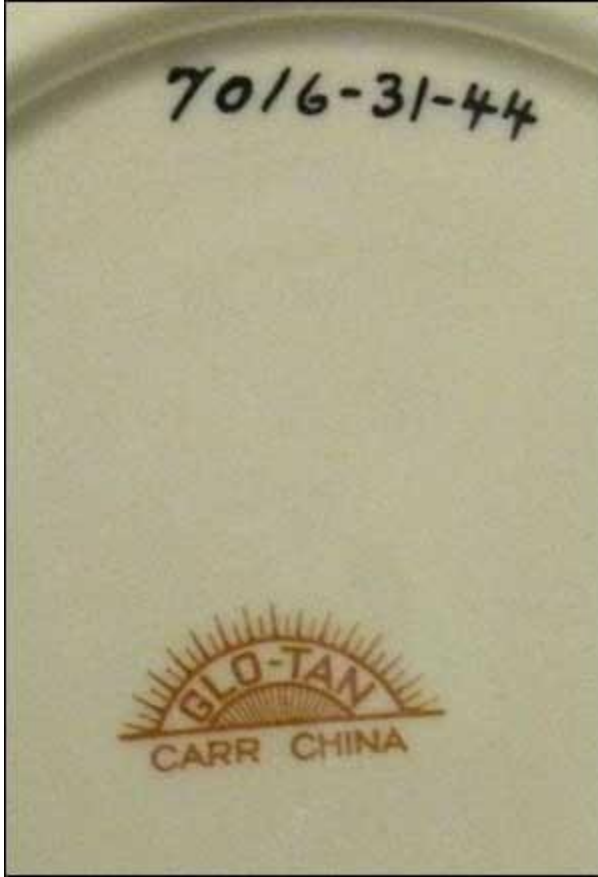


Carr China Company  
China from Joy Shaffer Bachman's estate at W.V. State Museum

### Mattson-designed #7016 pattern



Carr China Company  
China from Joy Shaffer Bachman's estate at W.V. State Museum  
Mattson-designed #7016 pattern cont'd





Carr China Company  
China from Joy Shaffer Bachman's estate at W.V. State Museum

Mayflower pattern



Carr China Company  
China from Joy Shaffer Bachman's estate at W.V. State Museum  
Mayflower pattern cont'd



Carr China Company  
China from Joy Shaffer Bachman's estate at W.V. State Museum

Princess pattern #6056



*Beautiful Princess  
pattern plate, fragrant  
weight.  
probably difficult to  
make because of the  
many colors used in  
the decoration.*



*"Princess"*  
CARR CHINA  
GRAFTON, W.VA.

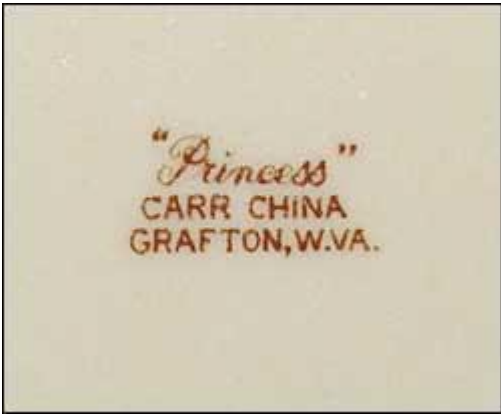
Carr China Company  
China from Joy Shaffer Bachman's estate at W.V. State Museum  
Princess pattern #6056 cont'd

Beautiful "Princess"  
pattern plate, banquet  
weight.  
Probably difficult to  
make because of the  
many colors used in  
the decoration.





Carr China Company  
China from Joy Shaffer Bachman's estate at W.V. State Museum  
Princess pattern #6056 cont'd



Sample backstamp for plate below





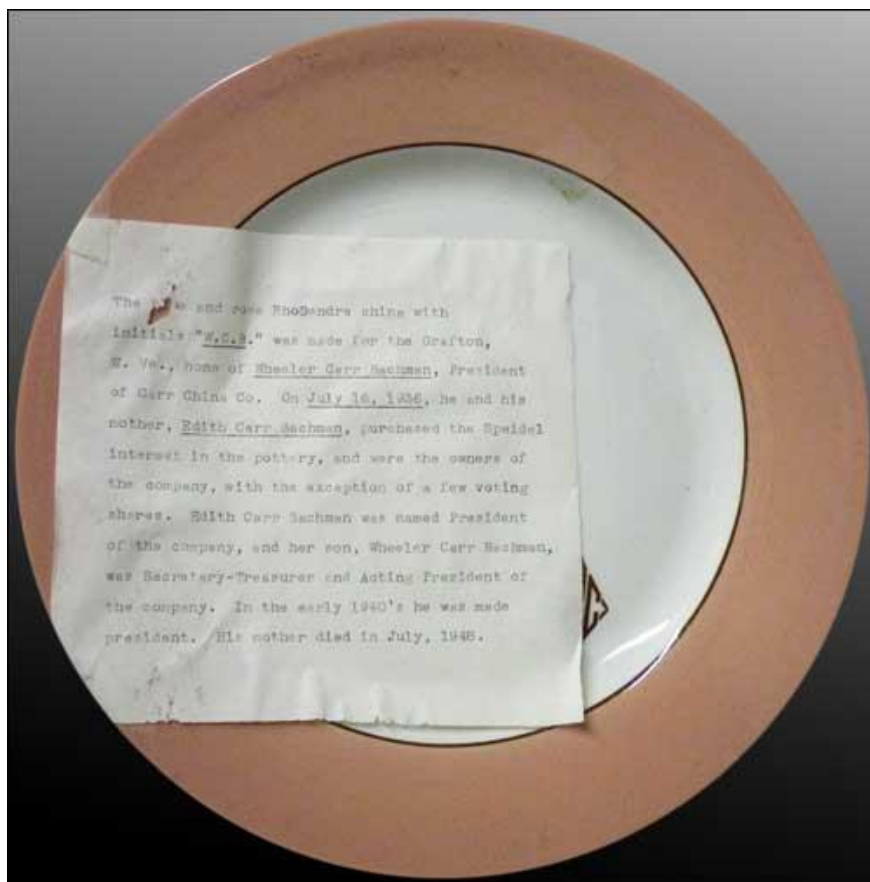
Carr China Company  
China from Joy Shaffer Bachman's estate at W.V. State Museum

## Rho Dendra pattern



Monogrammed sets of pink Rho Dendra for (top) Edith Carr Bachman and (below) for her son Wheeler Carr Bachman. It is our understanding that Wheeler's father had his own set of monogrammed Rho Dendra in blue.

Carr China Company  
China from Joy Shaffer Bachman's estate at W.V. State Museum  
Rho Dendra pattern cont'd



The blue and rose RhoDendra china with initials "W.C.B." was made for the Grafton, W. Va., home of Wheeler Carr Bachman, President of Carr China Co. On July 16, 1936, he and his mother, Edith Carr Bachman, purchased the Speidel interest in the pottery, and were the owners of the company, with the exception of a few voting shares. Edith Carr Bachman was named President of the company, and her son, Wheeler Carr Bachman, was Secretary-Treasurer and Acting President of the company. In the early 1940's he was made president. His mother died in July, 1948.

Carr China Company  
China from Joy Shaffer Bachman's estate at W.V. State Museum  
Rho Dendra pattern cont'd



Carr China Company  
China from Joy Shaffer Bachman's estate at W.V. State Museum

## Hostess Set with Rose pattern #6065



Carr China Company  
China from Joy Shaffer Bachman's estate at W.V. State Museum

Roses sample plate





Carr China Company  
China from Joy Shaffer Bachman's estate at W.V. State Museum

## Rust flowers



Carr China Company  
China from Joy Shaffer Bachman's estate at W.V. State Museum

Sample: 21-36-I



Carr China Company  
China from Joy Shaffer Bachman's estate at W.V. State Museum  
Sample 21-36-1 cont'd



Carr China Company  
China from Joy Shaffer Bachman's estate at W.V. State Museum

Sample: P37-1-56



Carr China Company  
China from Joy Shaffer Bachman's estate at W.V. State Museum

Sample: P39-6-27





Carr China Company  
China from Joy Shaffer Bachman's estate at W.V. State Museum  
Sample P39-6-27 cont'd



Carr China Company  
China from Joy Shaffer Bachman's estate at W.V. State Museum

Sample: P42-118-34



Carr China Company  
China from Joy Shaffer Bachman's estate at W.V. State Museum  
Sample P42-118-34 cont'd

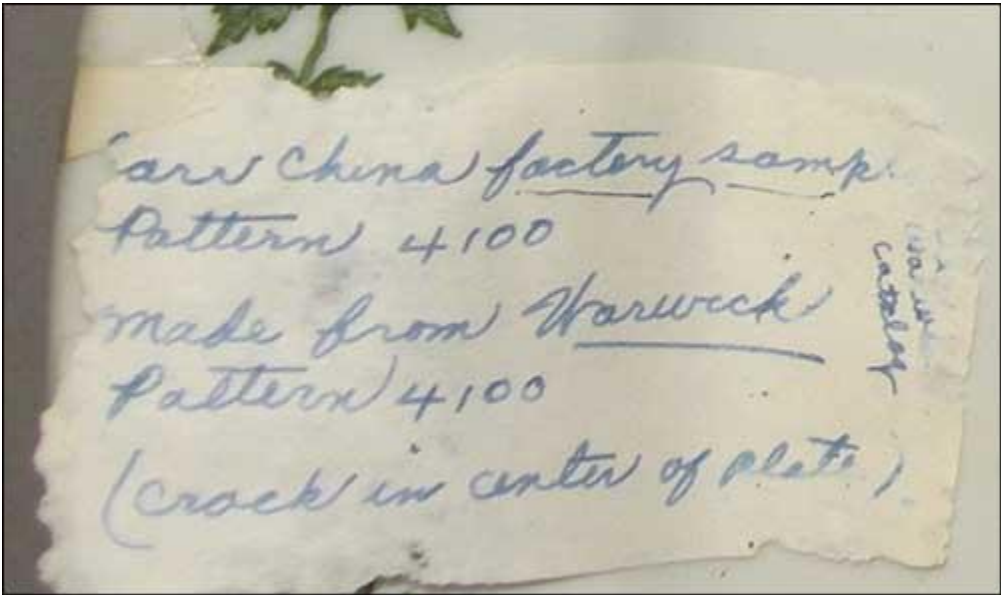


Carr China Company  
China from Joy Shaffer Bachman's estate at W.V. State Museum

Sample: 4100



Carr China Company  
China from Joy Shaffer Bachman's estate at W.V. State Museum  
Sample 4100 cont'd





Carr China Company  
China from Joy Shaffer Bachman's estate at W.V. State Museum

Sample: 6033



Carr China Company  
China from Joy Shaffer Bachman's estate at W.V. State Museum  
Sample 6033 cont'd



Carr China Company  
China from Joy Shaffer Bachman's estate at W.V. State Museum

Windsor pattern #6050



Experimental



Nothing is known about this pattern other than Joy's note wondering if it was an experimental design – and made in 1951.

Carr China Company  
China from Joy Shaffer Bachman's estate at W.V. State Museum  
Experimental cont'd





Sample 85



Carr China Company  
China from Joy Shaffer Bachman's estate at W.V. State Museum  
Sample 85 cont'd



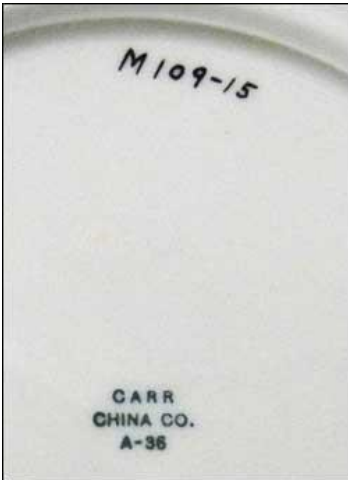
factory trial sample.  
made B-35 (2nd quarter 1935)

---

an unusual plate - Eight sections  
separated by telephone poles & lines.  
Each in each section different.  
House, barn, church, plowed field, etc.

Carr China Company  
China from Joy Shaffer Bachman's estate at W.V. State Museum

Sample: 109



Carr China Company  
China from Joy Shaffer Bachman's estate at W.V. State Museum  
Sample 109 cont'd



Carr China Company  
China from Joy Shaffer Bachman's estate at W.V. State Museum

Sample: P17-118-44





Carr China Company  
China from Joy Shaffer Bachman's estate at W.V. State Museum  
Sample P17-118-44 cont'd



Carr China Company  
China from Joy Shaffer Bachman's estate at W.V. State Museum

Sample: Southern Mansion



## 1946 Staff Party



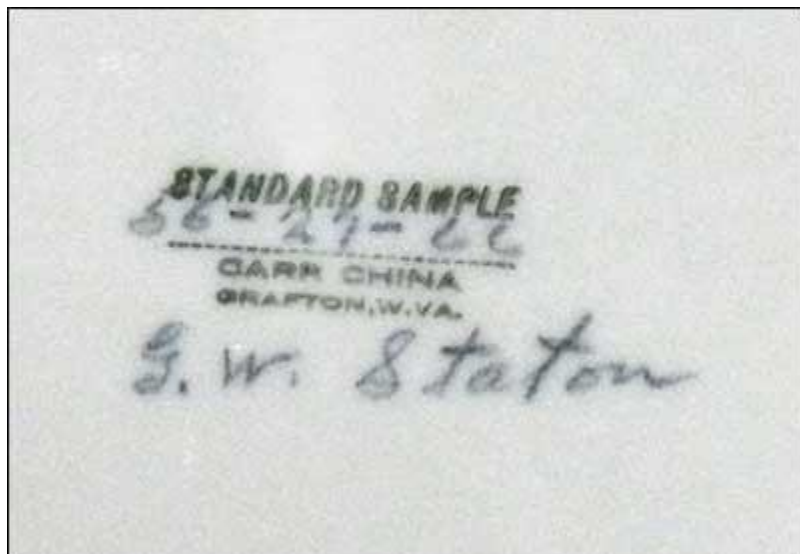
This is a souvenir of the pottery's staff party in 1946, but it is not known who signed the plate. Were they employees and not management?

Note the signature of George William Staton on the right side. It is beautifully executed. Staton worked for Carr as an artist and designed the Tygart Dam plates, the Andrews Methodist Church Mother's Day plate and the Philippi Bridge plate.

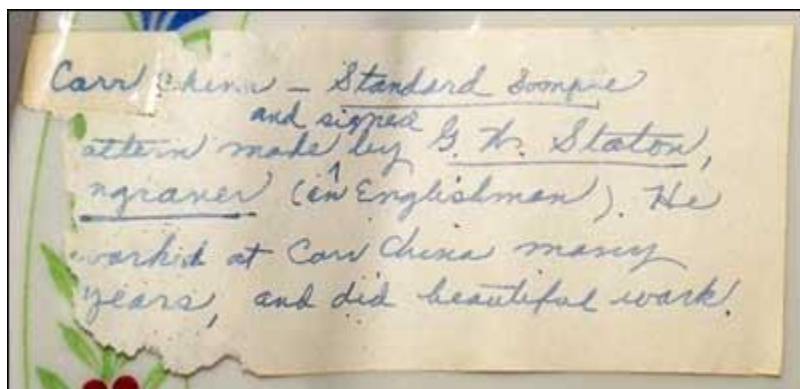
Staton Sample #56



Carr China Company  
China from Joy Shaffer Bachman's estate at W.V. State Museum  
Staton Sample #56 cont'd



This is a sample plate with two color palettes designed by artist George W. Staton. Per Joy's note, he was an English engraver who worked at Carr for "many years, and did beautiful work."





Carr China Company  
China from Joy Shaffer Bachman's estate at W.V. State Museum

Unknown pattern



Carr China Company  
China from Joy Shaffer Bachman's estate at W.V. State Museum

## Unknown pattern



Carr China Company  
China from Joy Shaffer Bachman's estate at W.V. State Museum  
Unknown pattern cont'd



CARR CHINA CO.  
GRAFTON, W. VA.  
44

Carr China Company  
China from Joy Shaffer Bachman's estate at W.V. State Museum

Tudor Rose

