

## **Carr China Company Paul C. Mattson Collection**



Paul C. Mattson, shown at work at his drawing table, was a designer for Carr China from 1934 to 1937. With the photography assistance of Bill Montgomery, his daughter, Judy Reed, shared with us a collection of his work from his time with Carr that included vitrified ware, sample boards and miscellaneous ephemera.

Mattson had a distinctive signature that sometimes only included the letter M. It is believed that anything backstamped with a version of Mattson's signature was a sample. (More Mattson designs can be found in our Joy Shaffer Bachman's Collection at the West Virginia State Museum.)

The 1937 sample plate shown on the next page came from the estate of one of Mattson's children, Richard (with his name prominently at the top), and

also included items that were Paul Mattson's. On the following page is a photo of Mattson's drawing tools that were acquired in the same auction.



What is referred to as sample boards were made of cardboard and measured about 12" x 18". They had white circles embossed on them, the size of a dinner plate, and it was on these boards – also embossed with Carr China Co., Grafton, W.Va. – that Mattson drafted new designs.

After his time with the Carr plant, Mattson began work at West Virginia Glass Company in Weston and continued to sign his pieces with his M.



## Mayflower pattern



For more info, [click here](#).

Carr China Company  
The Mattson Collection: Named or numbered patterns  
Mayflower pattern cont'd



CARR CHINA  
MADE FOR  
A. C. HOSKINS  
MORGANTOWN, W. VA.

## Onion pattern - green

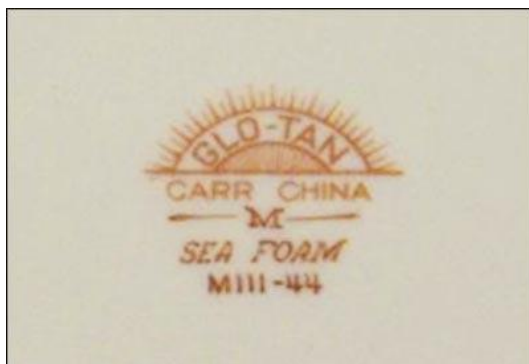


For more info, [click here](#).

Carr China Company  
The Mattson Collection: Named or numbered patterns  
Onion pattern cont'd



## Sea Foam pattern



For more info, [click here.](#)

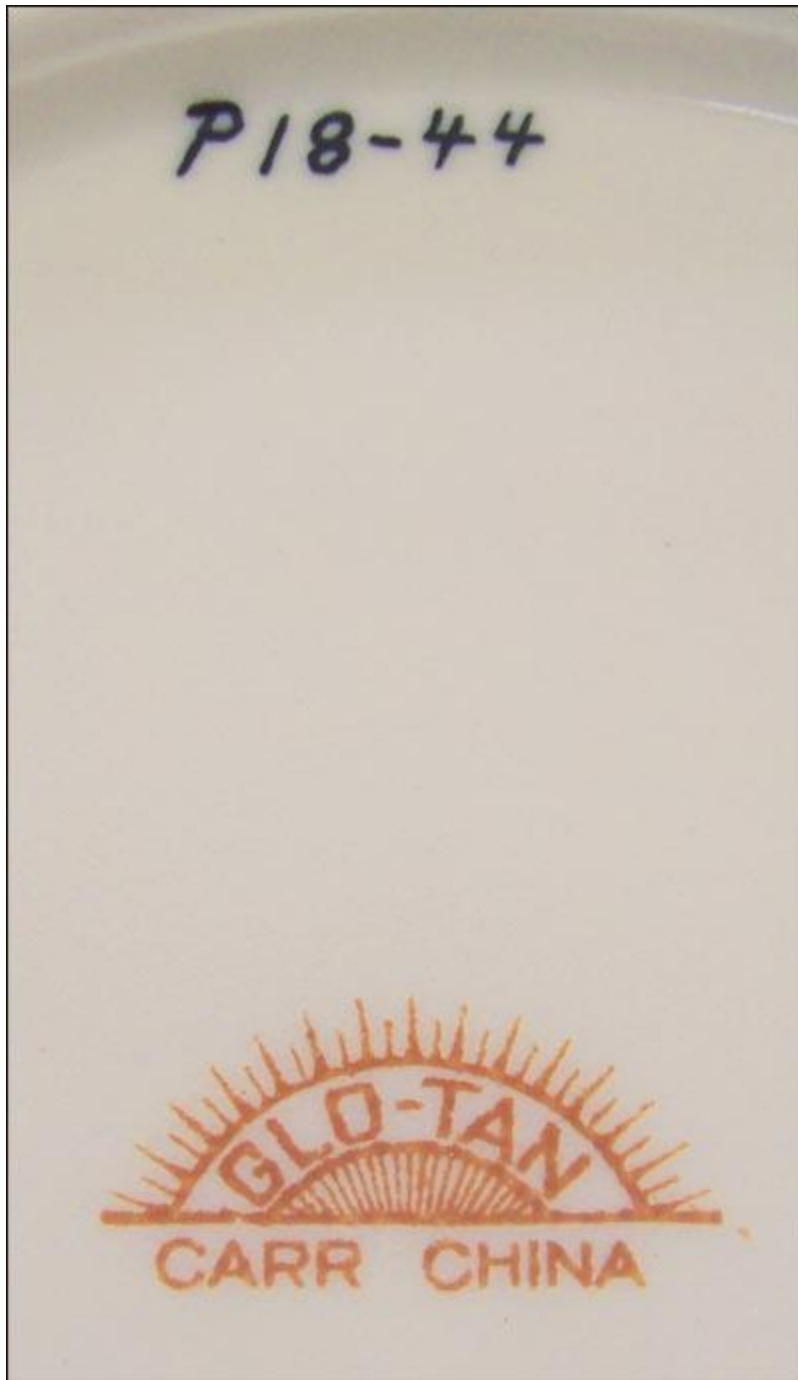


## Windsor pattern



For more info, [click here](#).

Carr China Company  
The Mattson Collection: Named or numbered patterns  
Windsor pattern cont'd



Carr China Company  
The Mattson Collection: Named or numbered patterns

Pattern #7016



Carr China Company  
The Mattson Collection: Named or numbered patterns

Pattern #7016-A



Carr China Company  
The Mattson Collection: Named or numbered patterns  
#7016-A pattern cont'd



Carr China Company  
The Mattson Collection: Unnamed patterns

Moderne-style border pattern for Club Cassano, Cincinnati, Ohio.



For more info, [click here](#).

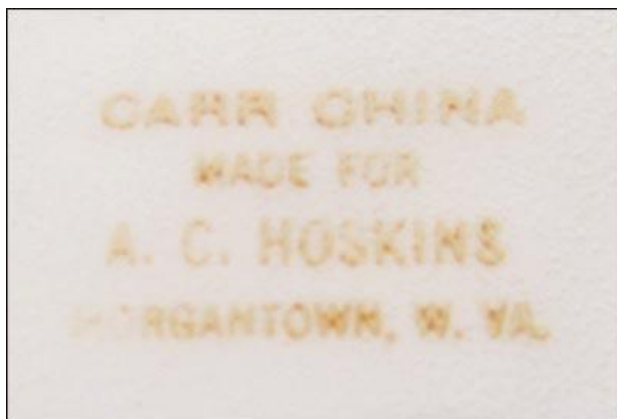


Carr China Company  
The Mattson Collection: Unnamed patterns

## Unknown Castle and Knight



For more info, [click here.](#)



## Unknown Blue Willow-inspired





Carr China Company  
The Mattson Collection: Unnamed patterns  
Blue Willow-inspired pattern cont'd

CARR  
CHINA CO.  
A-36

42  
-M-

Unknown ships with #7016 border



## Underglaze Print Pattern 7015



For more info, [click here](#).

Unknown



Unknown



Unknown



Unknown



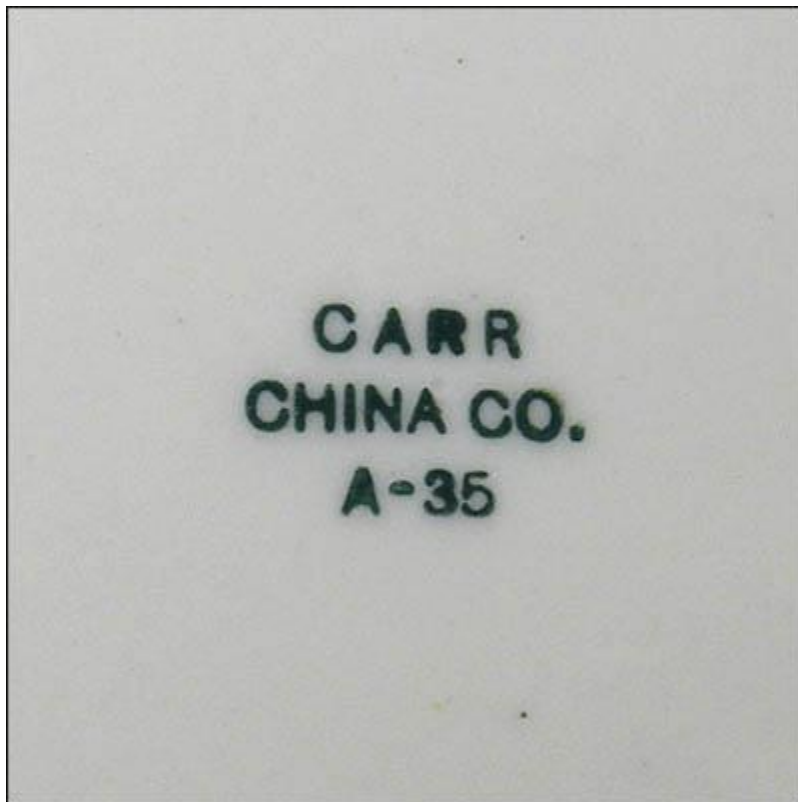
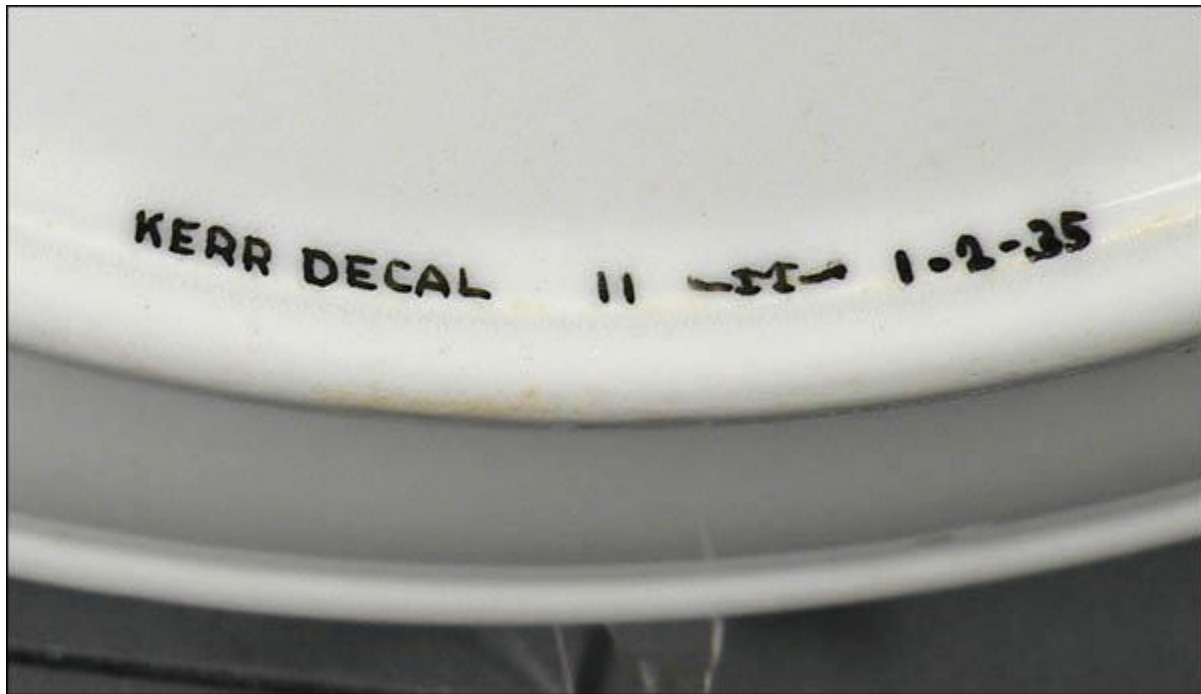
## Kerr Decal



For more info, [click here.](#)



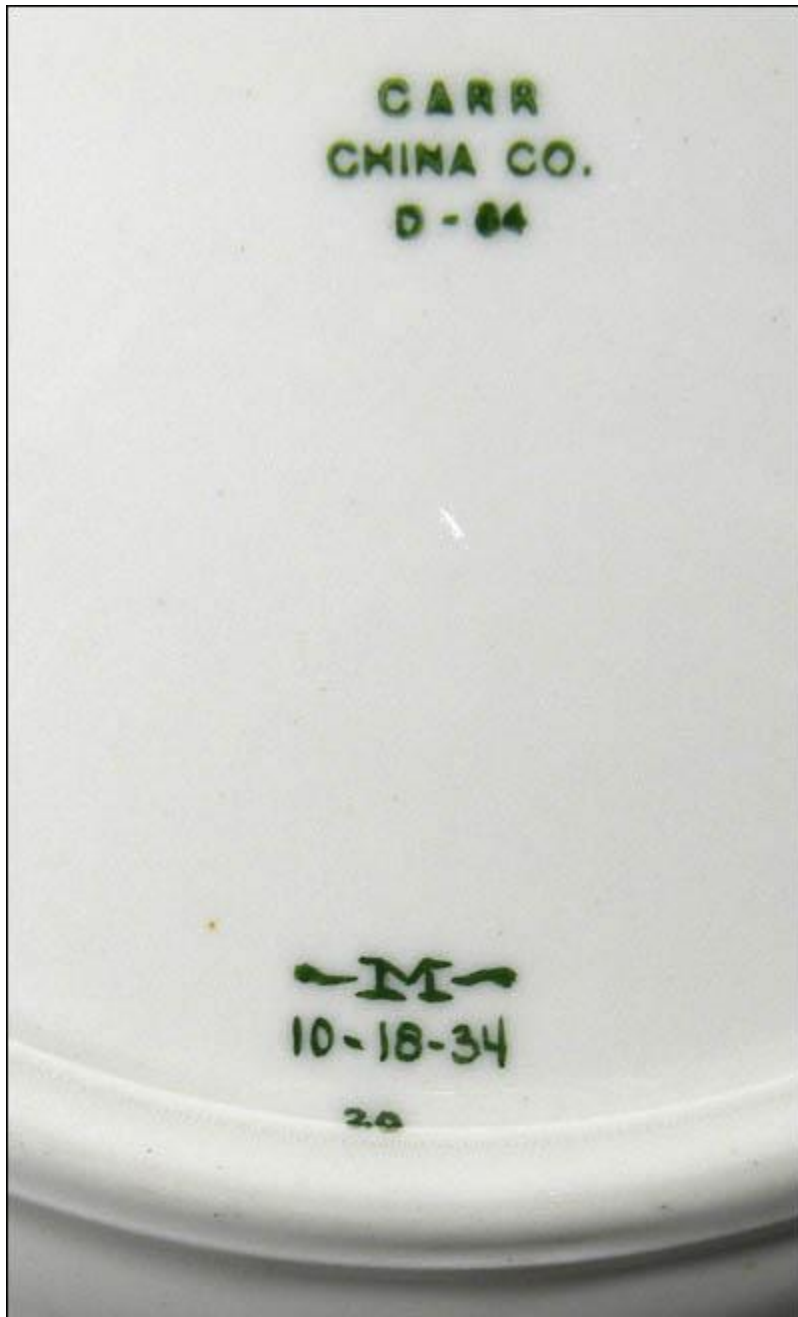
Carr China Company  
The Mattson Collection: Unnamed patterns  
Kerr Decal pattern cont'd



## Unknown Flower pattern



Carr China Company  
The Mattson Collection: Unnamed patterns  
Unknown flower pattern cont'd



Carr China Company  
The Mattson Collection: Unnamed patterns

## Unknown Glo-Tan Flower pattern



Carr China Company  
The Mattson Collection: Unnamed patterns  
Unknown Glo-Tan flower pattern cont'd



Carr China Company  
The Mattson Collection: Unnamed patterns

## Unknown Lilies





Sample Plate – monograms





## Sample Plate – organizations



For more info, [click here](#).



## Sample Plate – restaurants



For more info, [click here](#).



### Sample Plate – miscellaneous



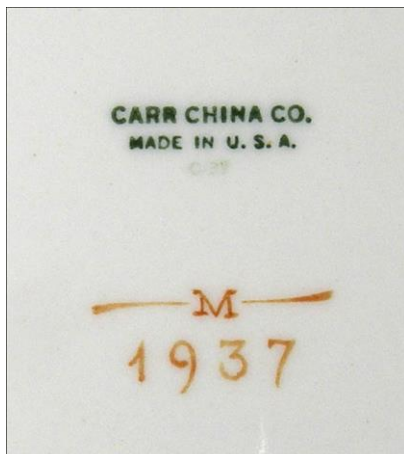
For more info, [click here](#).



Sample plate – restaurants (with son Richard at top)



For more info, [click here](#).



## Windsor pattern sample board



For more info, [click here](#).

## Dutch Henry's Restaurant sample board

Dutch Henry's Restaurant was located in Pittsburgh and was owned by "Dutch Henry" Boosman until his death in 1940. Boosman was an experienced restaurateur and had owned Pittsburgh restaurants since 1907.

Boosman's niece, Theresa E. Barry and her husband John A. Barry bought the restaurant in 1942.

The restaurant closed in the mid- to late 1950s.

It is not known if these samples were ever manufactured for the restaurant.



Carr China Company  
The Mattson Collection: Sample boards  
Dutch Henry's cont'd

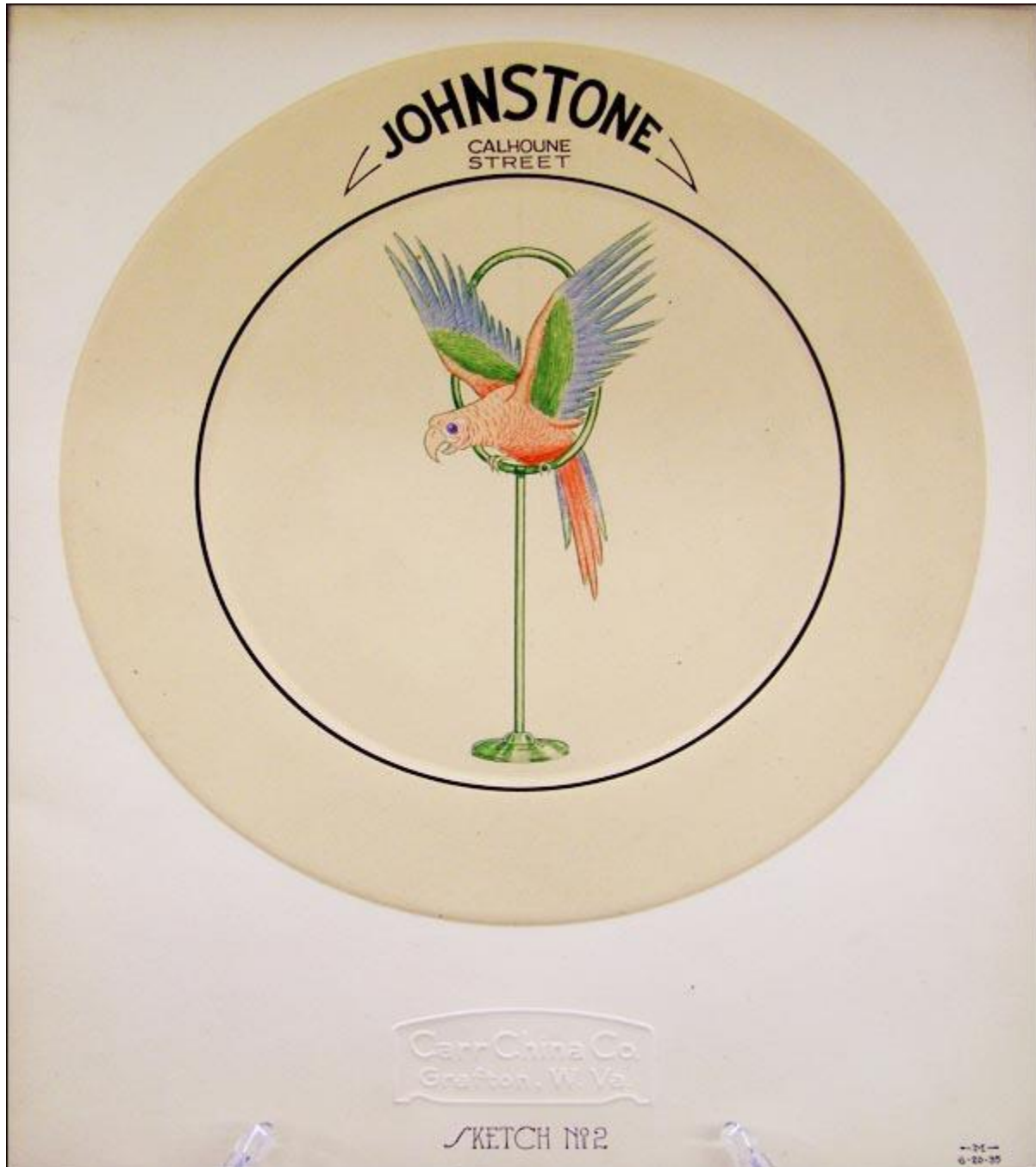


Carr China Company  
The Mattson Collection: Sample boards  
Dutch Henry's cont'd

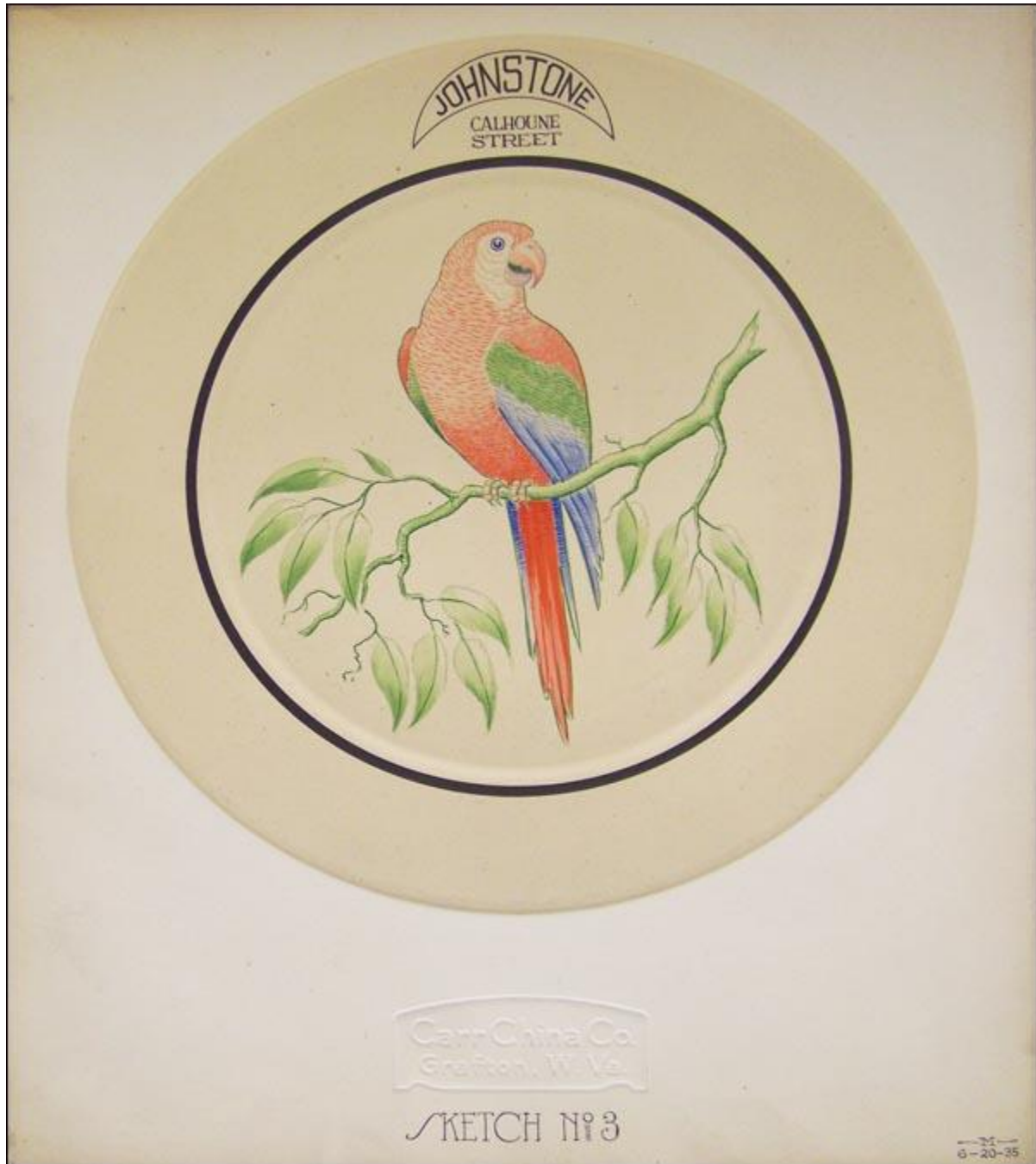




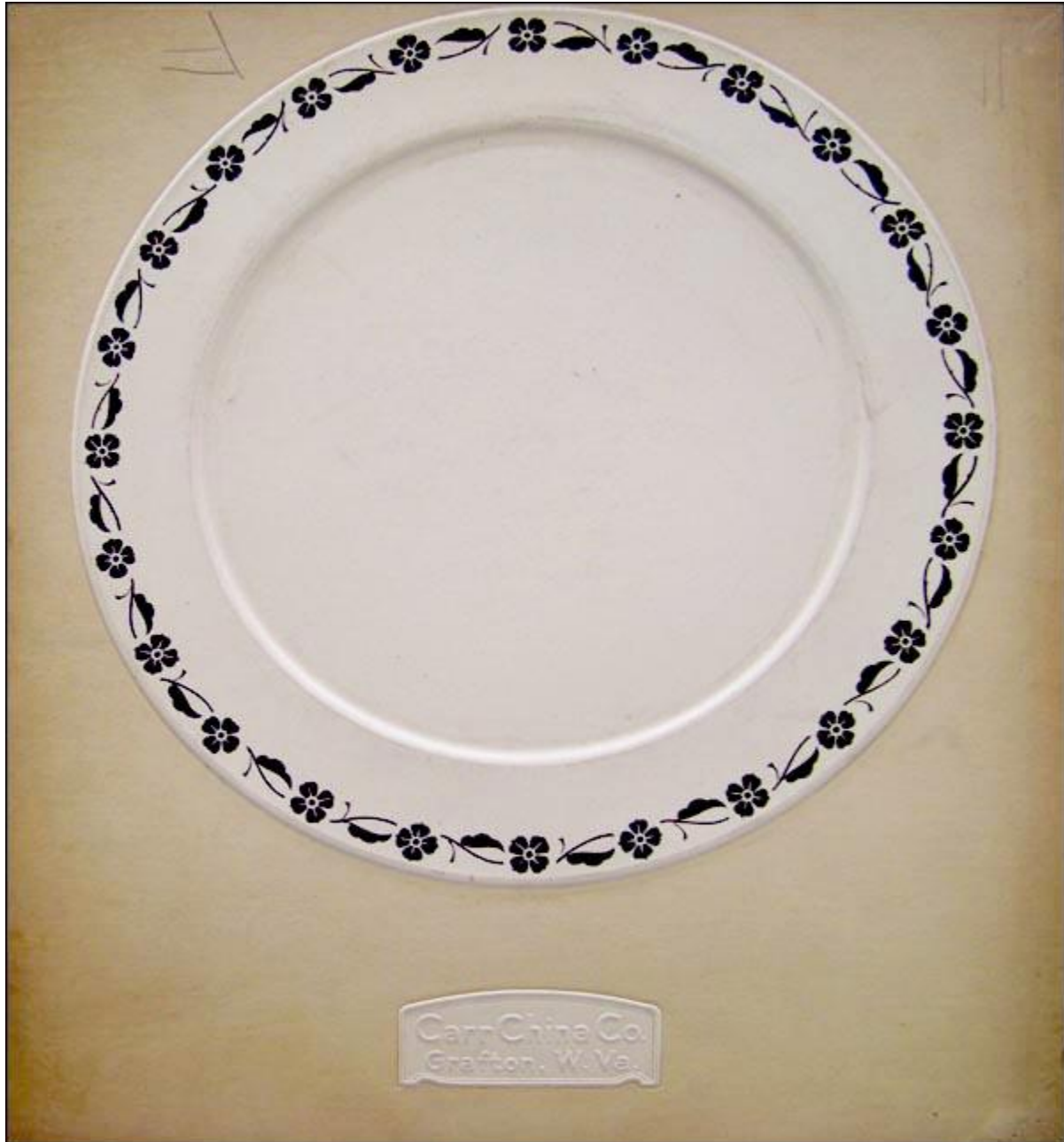
Sample board: Johnstone - Calhoun Street – Sketch No. 2



Sample board: Johnstone - Calhoun Street – Sketch No. 3



Sample board – unknown pattern



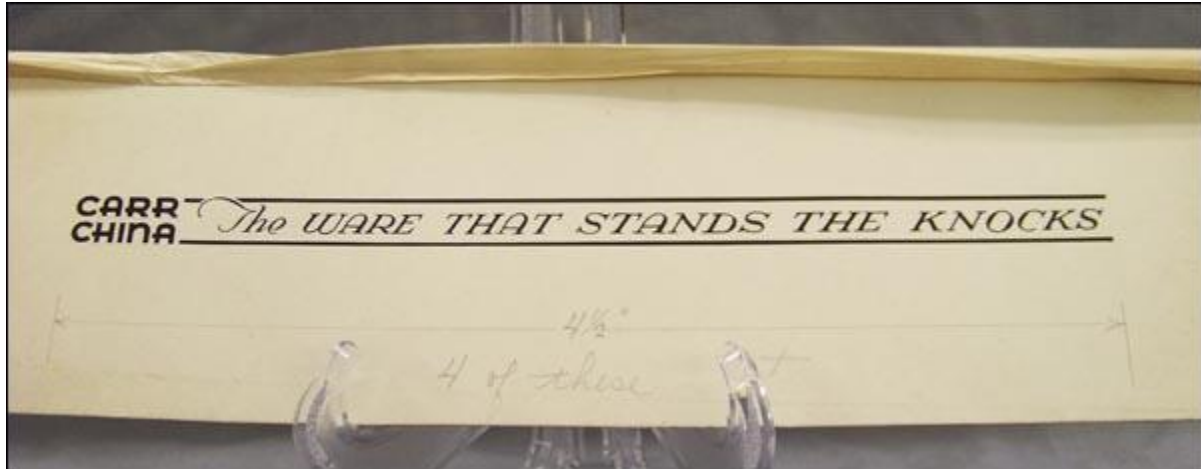
Sample board – unknown pattern



Sample board – unknown pattern



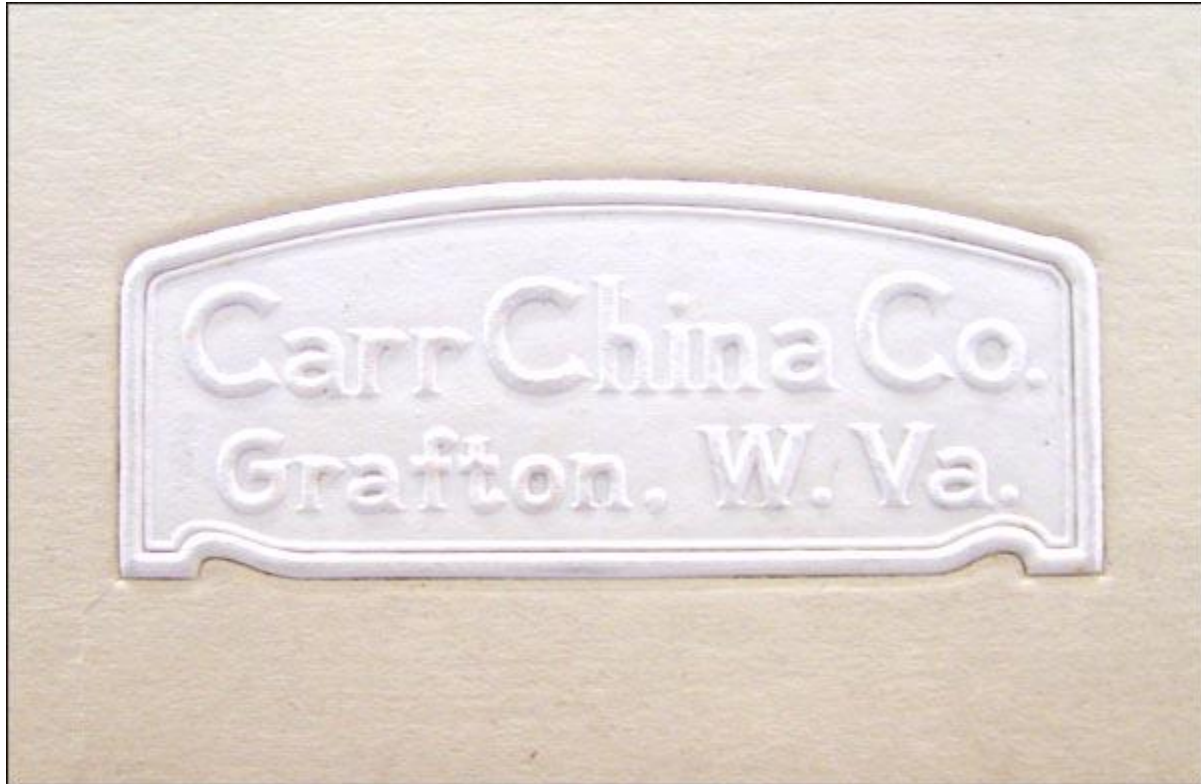
## The Ware That Stands the Knocks



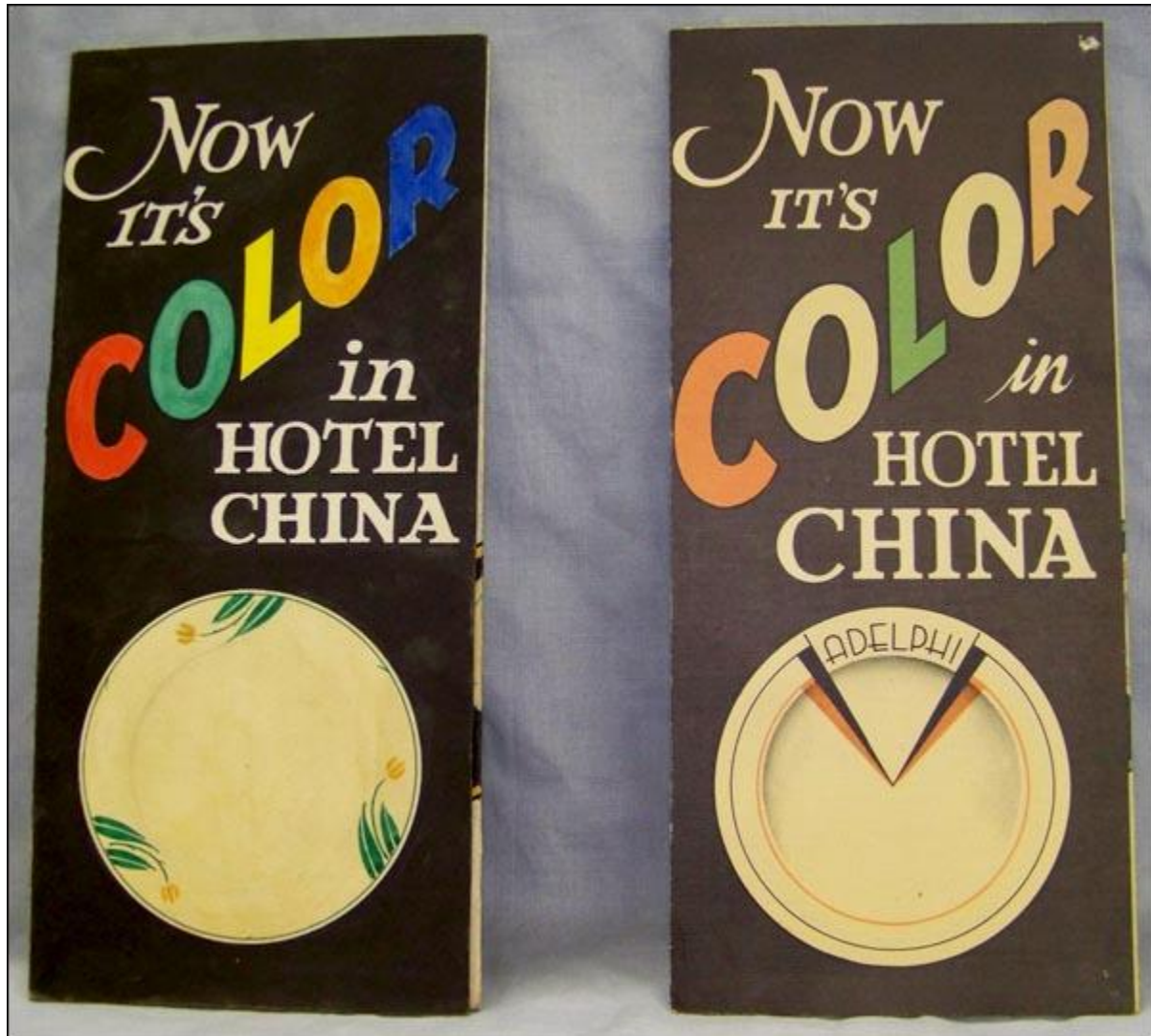
## What Is Behind Carr China?



Sample board embossing



Brochure







The following items made in

# GLO-TAN

ITEM:	Plain List	Deco List
2½" R E Baker	\$1.50	\$3.40
St. Francis Bouillon	1.60	3.60
30s Saxon Bowl, Half Thick	3.00	6.00
36s Saxon Bowl, Half Thick	2.75	5.50
#1 Delman Oatmeal	2.30	5.00
2" R E Butter	.50	1.40
Hotel A. D. Cup	1.40	3.00
R E A. D. Saucer	.90	1.90
Virginia Cream, Unhandled, 1 oz.	1.10	2.40
Tankard Cream, Unhandled, 3 oz.	1.80	3.80
3½" R E Fruit	1.00	2.25
3½" Puritan Fruit	1.20	2.50
4" Puritan Fruit	1.30	2.70
30s R E Grapefruit	2.25	4.90
Thompson Mug, Weld Handle, 7½ oz.	2.25	5.00
Vienna Mustard #2, 4½ oz.	3.00	6.50
Cereal Nappie	2.25	4.50
Oatmeal Nappie	2.40	4.80
Colonial Pitcher 36s	5.40	10.80
3" R E Plate	1.00	2.40
4" R E Plate	1.20	2.60
5" R E Plate	1.50	3.20
6" R E Plate	2.20	4.40
7" R E Plate	2.50	5.00
8" R E Plate	2.90	5.80
7" R E Rim Deep	2.65	5.30
St. Louis Grill Plate, 9½"	7.50	13.50
4" R E Platter	1.80	4.00
5" R E Platter	2.20	4.80
7" R E Platter	3.20	7.20
8" R E Platter	4.20	9.00
9" R E Platter	5.00	10.40
#2 R E Sugar	5.00	10.60
Boston Tea Cup, Block Handle, 7½ oz.	1.80	4.00
Conic Tea Cup, Weld Handle, 8 oz.	1.80	4.00
K & T Extra Tea Cup, Weld Handle, 7½ oz.	1.80	4.00
Marine Tea Cup, Block Handle	1.80	4.00
Ward Tea Cup, Weld Handle, 8 oz.	1.80	4.00
Boston Tea Saucer	1.10	2.20
Staple Tea Saucer	1.10	2.20

"GLO-TAN" is manufactured only by the

## CARR CHINA COMPANY

at GRAFTON, WEST VIRGINIA