

*Handwritten:* Iroquois China

**IROQUOIS**  
*China*

**IROQUOIS CHINA COMPANY**  
SYRACUSE • NEW YORK



# DURABLE

Rugged permanence has made Iroquois China a favorite among leading hotel and restaurant operators for nearly fifty years.

Yet, despite its extra endurance, Iroquois has an appealing charm of design that enhances the appearance of the table.

When durability and lasting quality is required, Iroquois China is the perfect choice.

**IROQUOIS**  
*China*

CATALOG NUMBER 29

OFFICERS OF THE IROQUOIS CHINA COMPANY

EARL CRANE.....*President*  
RAYMOND C. COBURN.....*Vice President*  
JAMES E. DARMODY.....*Treasurer*  
RAYMOND C. COBURN.....*Secretary*

To effect the closest coordination between plant and dealer sales efforts, we have listed below the names of department heads and field representatives of this company. Their assistance, in all china problems, is available at all times.

STANLEY F. CAMPION.....*Director of Sales*  
HAROLD W. POWERS.....*Asst. Sales Manager*

*New England*

R. W. COREY CO.  
PARKER HOUSE  
ROOMS 2 & 4  
BOSTON, MASS.

*Southwest*

BUBAR & Co.  
MAJESTIC BUILDING  
FORT WORTH, TEXAS

*East*

FRANK J. MCGURTY

*Mid-West*

DONALD G. MCKNIGHT

*Southeast*

ERNEST A. CREGO

IROQUOIS  
*China*



*The Modern Home of*

## IROQUOIS CHINA COMPANY

SYRACUSE • NEW YORK

For more than 45 years Iroquois China has been recognized for its fundamental good quality;— for its strength, resulting from the use of finest quality clays and careful manufacture;—for its long life because of its complete vitrification and flint-like glaze.

The expert craftsmanship which has produced Iroquois China through all these years, combined with most modern equipment and newest production methods, assures constant quality. Finest quality China clays, many of them imported from England, and used in the most costly and famous bone chinas, are the basis for Iroquois' superior body. The secret formulas for their blending have been the heritage of generations of China makers in Iroquois employ.

The principal items in the line of Iroquois China are illustrated or listed in this catalog. A widely diversified selection is offered for every important classification. For further information do not hesitate to write us. We solicit your inquiry.

"FOR THE HOSTS OF THE AMERICAS"

CATALOG NO. 29

*This Catalog Supersedes All Previously Published Iroquois China Catalogs*



| Illustration No. | Actual Measure | ARTICLES AND DESCRIPTIONS              | Trade Size | White List Per Doz. | Dec. List Per Doz. | *Production |
|------------------|----------------|--|------------|---------------------|--------------------|-------------|
| CUPS, TEA        |                |  |            |                     |                    |             |
| 4                | 6 oz.          | Auburn, Weld Hdl. . . . .              |            | \$2.00              | \$4.40             | W T         |
| 2                | 7 oz.          | Albany, Block Hdl. . . . .             |            | 2.00                | 4.40               | W T         |
| 6                | 7 oz.          | Boardman Weld Hdl. . . . .             |            | 2.00                | 4.40               | W T         |
| 1                | 7½ oz.         | Boston, L't Hdl. Thin. . . . .         |            | 2.00                | 4.40               |             |
| 26               | 7 oz.          | Chicago, Block Hdl. . . . .            |            | 2.00                | 4.40               | W T         |
| 3                | 7 oz.          | Cleveland, Block Hdl. . . . .          |            | 2.00                | 4.40               |             |
|                  | 7 oz.          | Coast, Block Hdl. . . . .              |            | 2.00                | 4.40               | W           |
| 5                | 7 oz.          | Conic, Weld Hdl. . . . .               |            | 2.00                | 4.40               |             |
| 10               | 8 oz.          | Davenport, Weld Hdl., Stackup. . . . . |            | 2.00                | 4.40               |             |
| 9                | 7 oz.          | Dixie, Weld Hdl., Stackup. . . . .     |            | 2.35                | 4.75               | W T         |
| 7                | 7 oz.          | Eureka, Weld Hdl. . . . .              |            | 2.00                | 4.40               |             |
| 8                | 7 oz.          | Eureka, Block Hdl. . . . .             |            | 2.00                | 4.40               |             |
| 13               | 7 oz.          | Globe, Weld Hdl. . . . .               |            | 2.00                | 4.40               |             |
| 11               | 6 oz.          | Illinois, Block Hdl. . . . .           |            | 2.00                | 4.40               | W           |
| 12               | 7½ oz.         | Manhattan, Weld Hdl. . . . .           |            | 2.00                | 4.40               | W T         |
| 14               | 7 oz.          | Morrison, Block Hdl. . . . .           |            | 2.00                | 4.40               |             |
| 17               | 7½ oz.         | Newton, Weld Hdl. Lgt. . . . .         |            | 2.00                | 4.40               |             |
| 21               | 8 oz.          | Oneida, Weld Hdl. . . . .              |            | 2.00                | 4.40               |             |
| 23               | 7½ oz.         | Philadelphia, Weld Hdl. . . . .        |            | 2.00                | 4.40               |             |
| 18               | 7 oz.          | Quarter Thick, Block Hdl. . . . .      |            | 2.00                | 4.40               |             |

\*Produced regularly in White (W) and Irotan (T) as marked.



| Illustration No.    | Actual Measure | ARTICLES AND DESCRIPTIONS           | Trade Size | White List Per Doz. | Dec. List Per Doz. | *Production |
|---------------------|----------------|-------------------------------------|------------|---------------------|--------------------|-------------|
| CUPS, TEA—Continued |                |                                     |            |                     |                    |             |
| 22                  | 9 oz.          | St. Denis, Block Hdl. Thin. . . . . |            | \$2.35              | \$4.75             |             |
| 16                  | 8 oz.          | Saxon, Unhlded Heavy . . . . .      |            | 1.60                | 3.60               |             |
| 15                  | 7 oz.          | Saxon, Medium Hdl. . . . .          |            | 2.00                | 4.40               | W           |
| 25                  | 7 oz.          | Salina, Weld Hdl. . . . .           |            | 2.00                | 4.40               |             |
| 24                  | 7½ oz.         | St. Paul, Block Hdl. . . . .        |            | 2.00                | 4.40               |             |
|                     | 7½ oz.         | Stern, Stackup. . . . .             |            | 2.35                | 4.75               |             |
|                     |                | plus 6c per dozen royalty           |            |                     |                    |             |
|                     | 7 oz.          | Tulip, Block Hdl. . . . .           |            | 2.00                | 4.40               |             |
| 27                  | 7 oz.          | Utica, Weld Hdl. . . . .            |            | 2.00                | 4.40               | W T         |
| 19                  | 8 oz.          | Waldorf, Block Hdl. . . . .         |            | 2.00                | 4.40               | W T         |
| 20                  | 7 oz.          | Ward, Block Hdl. . . . .            |            | 2.00                | 4.40               |             |

### SAUCERS, TEA

|        |  |      |      |     |
|--------|--|------|------|-----|
| 6 in.  | Albany, Plain Edge, Wide Foot. . . . . | 1.20 | 2.70 | W T |
| 6 in.  | Boardman, Plain Edge . . . . .         | 1.20 | 2.70 | W T |
| 4¾ in. | Cafeteria, Round Edge . . . . .        | 1.20 | 2.70 |     |
| 5½ in. | Conic, Pl. Edge, Thick . . . . .       | 1.20 | 2.70 |     |
| 6 in.  | Davenport, R.E., Large Well. . . . .   | 1.20 | 2.70 |     |
| 5½ in. | Davis, Round Edge, Large Well. . . . . | 1.20 | 2.70 | W T |

\*Produced regularly in White (W) and Irotan (T) as marked.

# COFFEE CUPS, BOUILLONS, SAUCERS, EGG CUPS...

Illustration No. Actual Measure ARTICLES AND DESCRIPTIONS Trade Size White List Per Doz. Dec. List Per Doz. \*Production

## SAUCERS, TEA—Continued

|    |        |                                   |       |        |        |     |
|----|--------|-----------------------------------|-------|--------|--------|-----|
| 36 | 5½ in. | Illinois, Plain Edge...           | ..... | \$1.20 | \$2.70 | W   |
|    | 6 in.  | Omaha, Round Edge, Wide Foot..... | ..... | 1.20   | 2.70   | W T |
|    | 6 in.  | Rolled Edge, Narrow Foot.....     | ..... | 1.20   | 2.70   | W T |
|    | 6 in.  | Thick, Tea Saucer....             | ..... | 1.20   | 2.70   |     |

## CUPS, AFTER DINNER COFFEE

|    |       |                                |       |      |      |     |
|----|-------|--------------------------------|-------|------|------|-----|
| 30 | 3 oz. | Saxon, Block Handle.....       | ..... | 1.30 | 3.30 | W T |
|    | 3 oz. | Saxon, Unhandled....           | ..... | 1.00 | 2.70 |     |
| 33 | 3 oz. | Saxon, Light Handle, Thin..... | ..... | 1.30 | 3.30 |     |
|    | 3 oz. | New York, Blk. Hdle.....       | ..... | 1.30 | 3.30 |     |
|    | 3 oz. | New York, Lgt. Hdle.....       | ..... | 1.30 | 3.30 |     |

## SAUCERS, AFTER DINNER COFFEE

|  |        |                           |       |      |      |     |
|--|--------|---------------------------|-------|------|------|-----|
|  | 5 in.  | Round Edge.....           | ..... | 1.00 | 2.50 |     |
|  | 5 in.  | Plain Edge.....           | ..... | 1.00 | 2.50 |     |
|  | 4¾ in. | Round Edge, Sm. Size..... | ..... | 1.00 | 2.50 | W T |
|  | 4¾ in. | Plain Edge, Sm. Size..    | ..... | 1.00 | 2.50 |     |

\*Produced regularly in White (W) and Irotan (T) as marked.



29



32



26



30



27



33



28



31



36



BOARDMAN



No. 1 SHALO-RIM



OMAHA



AD



DAVIS



RE TEA



No. 3 SHALO-RIM



37



38



34



39



35

Illustration No. Actual Measure ARTICLES AND DESCRIPTIONS Trade Size White List Per Doz. Dec. List Per Doz. \*Production

## CUPS, COFFEE

|    |        |                       |       |        |        |  |
|----|--------|-----------------------|-------|--------|--------|--|
| 31 | 8 oz.  | Albany.....           | ..... | \$2.35 | \$4.75 |  |
|    | 8½ oz. | Eureka.....           | ..... | 2.35   | 4.75   |  |
|    | 8½ oz. | Ruby, Block Handle..  | ..... | 2.35   | 4.75   |  |
| 28 | 10 oz. | Tulip, Unhandled..... | ..... | 2.00   | 4.20   |  |

## SAUCER, COFFEE

|  |        |                          |       |      |      |  |
|--|--------|--------------------------|-------|------|------|--|
|  | 6¼ in. | Round Edge.....          | ..... | 1.30 | 3.00 |  |
|  | 6¼ in. | Omaha Wd. Foot R.E. .... | ..... | 1.30 | 3.00 |  |

## BOUILLON CUPS

|    |        |                                 |       |      |      |     |
|----|--------|---------------------------------|-------|------|------|-----|
| 29 | 8½ oz. | Albany Coffee.....              | ..... | 2.25 | 4.90 |     |
| 32 | 7 oz.  | Albany Tea.....                 | ..... | 2.25 | 4.90 | W T |
| 35 | 7 oz.  | Chicago Tea.....                | ..... | 2.25 | 4.90 | W T |
|    | 7 oz.  | Eureka Tea.....                 | ..... | 2.25 | 4.90 |     |
| 34 | 7 oz.  | Quarter Thick Tea....           | ..... | 2.25 | 4.90 |     |
|    | 7½ oz. | Boston Tea, L't HT'd, Thin..... | ..... | 2.25 | 4.90 |     |
|    |        | Unhdd. Tea Bouillons .....      | ..... | 1.60 | 3.60 | W T |
|    |        | Unhdd. Coffee Bouils. ....      | ..... | 2.10 | 4.20 |     |

## EGG CUPS

|    |       |                           |       |      |      |     |
|----|-------|---------------------------|-------|------|------|-----|
| 39 | 5 oz. | Albany, Footed.....       | No. 2 | 2.40 | 5.00 |     |
| 37 | 5 oz. | Double.....               | ..... | 2.20 | 4.50 | W T |
| 38 | 7 oz. | Rd. Edge, Unhandled. .... | No. 1 | 1.80 | 4.00 | W T |
| 38 | 4 oz. | Rd. Edge, Unhandled. .... | No. 2 | 1.70 | 3.60 | W T |

\*Produced regularly in White (W) and Irotan (T) as marked.



1



4



7



2



1\"/>

1\"/>

1\"/>



5



8



3



6



9

Illustration No. Actual Measure

ARTICLES AND DESCRIPTIONS

Trade Size White List Per Doz. Dec. List Per Doz. \*Production

COMPARTMENT PLATES

|   |            |                                |       |         |         |     |
|---|------------|--------------------------------|-------|---------|---------|-----|
| 1 | 11 1/4 in. | Compartment Rd. Edge.....      | No. 1 | \$15.00 | \$30.00 |     |
| 2 | 9 1/4 in.  | Compartment Rd. Edge.....      | No. 2 | 5.00    | 10.00   |     |
| 3 | 9 7/8 in.  | Medium Rd. Edge.....           |       | 7.50    | 15.00   | W T |
| 3 | 9 in.      | Lunchette, 2 Compartments..... |       | 10.00   | 30.00   |     |
| 6 | 10 in.     | Rippleware.....                |       | 7.50    | 15.00   | W T |
| 4 | 9 1/2 in.  | Shal-O-Rim, 3 Compartment..... |       | 5.00    | 10.00   | W T |
| 4 | 9 1/2 in.  | Shal-O-Rim, 5 Compartment..... |       | 10.00   | 20.00   |     |
| 1 | 9 7/8 in.  | Med. Blue (or Pink) Plate..    |       |         |         | W   |

COMPARTMENT PLATTERS

|    |        |  |       |       |       |  |
|----|--------|--|-------|-------|-------|--|
| 5  | 12 in. | Compartment Platter, Oval, 4 Compartments..... | No. 1 | 12.00 | 23.00 |  |
| 12 | in.    | Compartment Platter, Oval, 3 Compartments..... | No. 2 | 12.00 | 23.00 |  |

PLATES

|   |           |                  |           |      |      |     |
|---|-----------|------------------|-----------|------|------|-----|
| 7 | 5 1/2 in. | Rolled Edge..... | 3 in.     | 1.00 | 2.50 | W T |
| 7 | 6 3/8 in. | Rolled Edge..... | 4 in.     | 1.30 | 3.00 | W T |
| 7 | 6 3/4 in. | Rolled Edge..... | 4 1/2 in. | 1.50 | 3.40 | W T |
| 7 | 7 1/8 in. | Rolled Edge..... | 5 in.     | 1.70 | 3.70 | W T |
| 8 | in.       | Rolled Edge..... | 6 in.     | 2.20 | 4.60 | W T |
| 7 | 9 in.     | Rolled Edge..... | 7 in.     | 2.75 | 5.50 | W T |
| 7 | 9 3/4 in. | Rolled Edge..... | 8 in.     | 3.25 | 6.30 | W T |

\*Produced regularly in White (W) and Irotan (T) as marked.

Illustration No. Actual Measure

ARTICLES AND DESCRIPTIONS

Trade Size White List Per Doz. Dec. List Per Doz. \*Production

PLATES—Continued

|   |            |                    |           |      |       |     |
|---|------------|--------------------|-----------|------|-------|-----|
| 7 | 10 1/2 in. | Rolled Edge.....   | 10 in.    | 4.50 | 8.40  | W T |
| 8 | 10 5/8 in. | Service, New.....  |           | 6.50 | 13.60 | W   |
| 9 | 5 1/2 in.  | Quarter Thick..... | 3 in.     | 1.10 | 2.70  | W   |
| 9 | 6 1/4 in.  | Quarter Thick..... | 4 in.     | 1.40 | 3.20  | W   |
| 9 | 6 3/4 in.  | Quarter Thick..... | 4 1/2 in. | 1.60 | 3.60  | W   |
| 9 | 7 in.      | Quarter Thick..... | 5 in.     | 1.80 | 3.90  | W   |
| 9 | 8 in.      | Quarter Thick..... | 6 in.     | 2.30 | 4.80  | W   |
| 9 | 9 in.      | Quarter Thick..... | 7 in.     | 2.80 | 5.70  | W   |
| 9 | 9 3/4 in.  | Quarter Thick..... | 8 in.     | 3.75 | 7.50  | W   |
| 9 | 10 1/4 in. | Quarter Thick..... | 10 in.    | 4.50 | 9.50  | W   |

BOWLS (See page 5)

|   |           |                                 |     |                   |      |     |
|---|-----------|---------------------------------|-----|-------------------|------|-----|
| 8 | 6 1/2 in. | R.E. Oyster, Ftd, 27 oz.....    | 24s | Quoted on request |      |     |
| 8 | 6 in.     | R.E. Oyster, Ftd, 22 oz.....    | 30s | Quoted on request |      |     |
| 8 | 5 3/4 in. | R.E. Oyster, Ftd, 19 oz.....    | 36s | Quoted on request |      |     |
| 8 | 5 1/4 in. | R.E. Oyster, Ftd, 14 oz.....    | 42s | Quoted on request |      |     |
|   | 14 oz.    | Harvard, 14 oz.....             | 42s | 2.50              | 5.00 | W T |
| 6 | 5 3/4 in. | Half Thick, Low Ft., 18 oz..... | 30s | 3.00              | 6.00 | W T |
| 7 | 5 1/4 in. | Half Thick, Low Ft., 14 oz..... | 36s | 2.75              | 5.50 | W T |
| 6 | 5 3/4 in. | Thick, Low Foot, 17 oz.....     | 30s | 2.75              | 5.50 | W T |
| 7 | 5 3/8 in. | Thick, Low Foot, 15 oz.....     | 36s | 2.50              | 5.00 | W T |
|   | 4 1/2 in. | Thick, Low Foot, 10 oz.....     | 42s | 2.25              | 4.50 |     |
|   | 5 in.     | Saxon, 12 oz.....               |     | Quoted on request |      |     |
|   | 4 7/8 in. | Puree, Handled, 10 oz.....      |     | Quoted on request |      |     |

\*Produced regularly in White (W) and Irotan (T) as marked.

# DISHES, BOWLS, FRUIT SAUCERS, NAPPIES . . .

| Illustration No.         | Actual Measure | ARTICLES AND DESCRIPTIONS           | Trade Size | White List Per Doz. | Dec. List Per Doz. | *Production | Illustration No.                             | Actual Measure | ARTICLES AND DESCRIPTIONS | Trade Size | White List Per Doz. | Dec. List Per Doz. | *Production |
|--------------------------|----------------|-------------------------------------|------------|---------------------|--------------------|-------------|--|----------------|---------------------------|------------|---------------------|--------------------|-------------|
| <b>FRUIT SAUCERS</b>     |                |                                     |            |                     |                    |             | <b>BOWLS, OATMEAL</b>                        |                |                           |            |                     |                    |             |
|                          | 4 in.          | Rolled Edge, 3 oz.                  | 3 in.      | .90                 | 2.30               | W T         | 12   | 6 1/8 in.      | Rolled Edge, 12 oz.       | No. 1      | 2.30                | 5.00               | W T         |
|                          | 4 7/8 in.      | Rolled Edge, Conic.                 | 3 in.      | 1.00                | 2.50               | W T         |  | 6 1/4 in.      | Rolled Edge, 13 oz.       | No. 1 1/2  | 2.30                | 5.00               |             |
|                          | 4 5/8 in.      | Rolled Edge, 4 oz.                  | 3 1/4 in.  | 1.00                | 2.50               | W T         | 16   | 5 3/4 in.      | Rolled Edge, 10 oz.       | No. 2      | 2.15                | 4.80               | W T         |
| 14                       | 4 7/8 in.      | Rolled Edge, 5 oz.                  | 3 1/2 in.  | 1.00                | 2.50               | W T         |  | 6 in.          | Quarter Thick, 12 oz.     | No. 1      | 2.30                | 5.00               |             |
|                          | 5 3/8 in.      | Rolled Edge, 6 1/2 oz.              | 4 in.      | 1.10                | 2.60               | W T         | <b>DISHES (PLATTERS)</b>                     |                |                           |            |                     |                    |             |
|                          | 5 5/8 in.      | Rolled Edge, 8 oz.                  | 4 1/2 in.  | 1.20                | 2.80               |             | Rolled Edge Platters made in flat shape only |                |                           |            |                     |                    |             |
|                          | 5 in.          | Quarter Thick                       | 4 in.      | 1.25                | 2.80               | W           |  | Flat           |                           |            |                     |                    |             |
| 10                       | 5 1/4 in.      | Quarter Thick, 6 1/2 oz.            | 4 1/2 in.  | 1.35                | 3.00               |             | 1  | 6 1/4 in.      | Rolled Edge               | 3 in.      | \$ 1.60             | \$ 3.90            | W T         |
|                          | 4 1/2 in.      | Rolled Edge, Illinois               | 3 in.      | .90                 | 2.30               | W T         |  | 7 3/8 in.      | Rolled Edge               | 4 in.      | 1.80                | 4.20               | W T         |
| <b>NAPPIES</b>           |                |                                     |            |                     |                    |             | 2  | 8 1/4 in.      | Rolled Edge               | 5 in.      | 2.20                | 4.80               | W T         |
|                          | 4 1/2 in.      | Rolled Edge, 6 1/2 oz.              | 2 in.      | 1.85                | 4.00               | W T         | 3  | 9 1/2 in.      | Rolled Edge               | 6 in.      | 2.75                | 5.90               | W T         |
| 13                       | 5 in.          | Rolled Edge, 11 1/2 oz.<br>(Cereal) | 3 in.      | 2.00                | 4.30               | W T         | 4  | 10 3/4 in.     | Rolled Edge               | 7 in.      | 3.20                | 6.60               | W T         |
|                          | 5 1/2 in.      | Rolled Edge, 14 oz. (Soup)          | 3 1/2 in.  | 2.40                | 4.80               | W T         | 5  | 11 3/4 in.     | Rolled Edge               | 8 in.      | 4.20                | 8.20               | W T         |
|                          | 5 3/4 in.      | Rolled Edge, 16 oz.<br>(Oatmeal)    | 4 in.      | 2.50                | 5.00               | W T         |  | 13 3/8 in.     | Rolled Edge               | 9 in.      | 5.00                | 9.60               | W T         |
| 17                       | 6 in.          | Rolled Edge, 18 oz.                 | 4 1/2 in.  | 2.75                | 5.50               | W T         | 1  | 13 3/4 in.     | Rolled Edge               | 10 in.     | 7.00                | 13.00              | W T         |
|                          | 6 1/2 in.      | Rolled Edge, 23 oz.                 | 5 in.      | 3.00                | 6.00               |             | 2  | 15 1/4 in.     | Rolled Edge               | 12 in.     | 10.00               | 18.00              | W T         |
| <b>BOWLS, GRAPEFRUIT</b> |                |                                     |            |                     |                    |             | 3  | 17 3/8 in.     | Rolled Edge               | 14 in.     | 16.00               | 27.00              | W           |
|                          | 6 3/8 in.      | Puritan, R.E., Rim                  | No. 1      | 2.00                | 4.30               | W T         | 1  | 6 1/4 in.      | Quarter Thick             | 3 in.      | 1.85                | 4.40               | W           |
| 15                       | 6 1/4 in.      | Rolled Edge, Rim, 8 oz.             | No. 1      | 2.00                | 4.30               | W T         |  | 7 3/8 in.      | Quarter Thick             | 4 in.      | 2.05                | 4.70               | W           |
|                          | 5 1/2 in.      | Rolled Edge, Rim, 5 1/2 oz.         | No. 2      | 1.80                | 3.90               | W T         | 2  | 8 1/4 in.      | Quarter Thick             | 5 in.      | 2.45                | 5.30               | W           |
| 11                       | 6 1/4 in.      | Quarter Thick, Rim, 8 oz.           | No. 1      | 2.25                | 4.90               | W           | 3  | 9 1/2 in.      | Quarter Thick             | 6 in.      | 3.00                | 6.40               | W           |
|                          |                |                                     |            |                     |                    |             | 4  | 10 3/4 in.     | Quarter Thick             | 7 in.      | 3.45                | 7.10               | W           |
|                          |                |                                     |            |                     |                    |             | 5  | 11 3/4 in.     | Quarter Thick             | 8 in.      | 4.45                | 8.70               | W           |
|                          |                |                                     |            |                     |                    |             |  | 13 3/4 in.     | Quarter Thick             | 9 in.      | 5.25                | 10.50              | W           |
|                          |                |                                     |            |                     |                    |             |  | 15 1/4 in.     | Quarter Thick             | 10 in.     | 7.25                | 13.50              | W           |
|                          |                |                                     |            |                     |                    |             |  |                |                           | 12 in.     | 10.25               | 18.50              | W           |

\*Produced regularly in White (W) and Irotan (T) as marked.

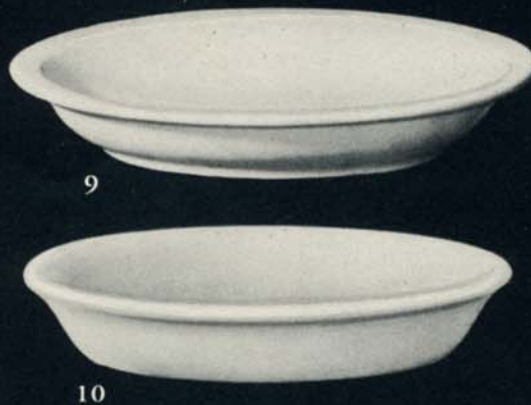
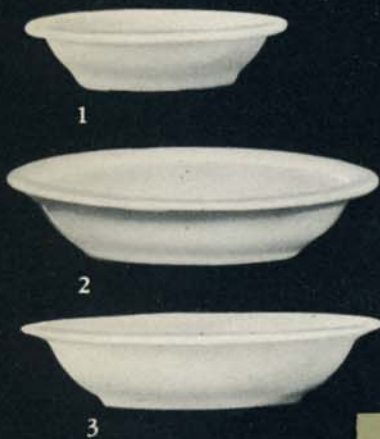
\*Produced regularly in White (W) and Irotan (T) as marked.







| Illustration No.          | Actual Measure | ARTICLES AND DESCRIPTIONS        | Trade Size                          | White List Per Doz. | Dec. List Per Doz. | *Production |
|---------------------------|----------------|----------------------------------|-------------------------------------|---------------------|--------------------|-------------|
| <b>CREAMS, INDIVIDUAL</b> |                |                                  |                                     |                     |                    |             |
| 5                         | 4 oz.          | Marquette.....                   | No. 1                               | \$ 1.60             | \$ 3.80            | W T         |
|                           | 1½ oz.         | Marquette.....                   | No. 2                               | 1.20                | 3.15               |             |
|                           | 1 oz.          | Marquette.....                   | No. 3                               | 11.0                | 3.00               | W T         |
|                           | 2 oz.          | Rolled Edge Hldd.....            | 60s                                 | 1.60                | 3.40               | W T         |
|                           | 3 oz.          | Rolled Edge Hldd.....            | 54s                                 | 1.80                | 3.80               | W T         |
|                           | 3 oz.          | Vienna, UnHldd.....              | No. 1                               | 1.50                | 3.60               | W T         |
|                           | 2 oz.          | Vienna, UnHldd.....              | No. 2                               | 1.30                | 3.30               | W T         |
|                           | 1½ oz.         | Vienna, UnHldd.....              | No. 2½                              | 1.20                | 3.15               |             |
|                           | 1 oz.          | Vienna, UnHldd.....              | No. 3                               | 1.10                | 3.00               | W T         |
| 7                         | 1 oz.          | York, Unhandled.....             |                                     | 1.10                | 3.00               |             |
|                           | 2 oz.          | Philadelphia, Unhandled..        | No. 1                               | 1.30                | 3.30               |             |
| 8                         | 1 oz.          | Philadelphia, Unhandled..        | No. 2                               | 1.10                | 3.00               |             |
| <b>PLATES, SOUP</b>       |                |                                  |                                     |                     |                    |             |
|                           | 6¾ in.         | Rolled Edge, Rim Deep....        | 5 in.                               | 1.65                | 3.70               | W T         |
| 16                        | 7½ in.         | Rolled Edge, Rim Deep....        | 6 in.                               | 2.35                | 4.90               | W T         |
|                           | 8½ in.         | Rolled Edge, Rim Deep....        | 6½ in.                              | 2.75                | 5.50               |             |
| 14                        | 8¾ in.         | Rolled Edge, Rim Deep....        | 7 in.                               | 3.10                | 6.00               | W T         |
| 10                        | 7¼ in.         | Rolled Edge, Coupe Deep..        | 6 in.                               | 2.20                | 4.50               | W T         |
|                           | 8 in.          | Rolled Edge, Coupe Deep..        | 7 in.                               | 2.50                | 5.10               |             |
| 15                        | 8¾ in.         | Quarter Thick, Rim Deep..        | 7 in.                               | 3.20                | 6.20               |             |
| 11                        | 7½ in.         | Quarter Thick, Coupe Deep        | 6 in.                               | 2.30                | 4.70               |             |
| <b>SALADS</b>             |                |                                  |                                     |                     |                    |             |
| 2                         | 10¾ in.        | Rolled Edge, High Foot... No. 1  |                                     | 18.00               | 32.00              | W T         |
|                           | 9¾ in.         | Rolled Edge, High Foot... No. 2  |                                     | 12.00               | 22.00              | W T         |
|                           | 8¾ in.         | Rolled Edge, High Foot... No. 3  |                                     | 9.00                | 16.80              | W T         |
|                           | 7¾ in.         | Rolled Edge, High Foot... No. 4  |                                     | 6.60                | 12.00              | W T         |
| 1                         | 6½ in.         | Rolled Edge, High Foot... No. 5  |                                     | 4.20                | 8.00               | W T         |
|                           | 5½ in.         | Rolled Edge, High Foot... No. 6  |                                     | 3.60                | 7.00               | W T         |
|                           | 10¾ in.        | Rolled Edge, Low Foot... No. 1   |                                     | 12.00               | 24.00              | W T         |
|                           | 9¾ in.         | Rolled Edge, Low Foot... No. 2   |                                     | 9.00                | 18.00              | W T         |
| 9                         | 8¾ in.         | Rolled Edge, Low Foot... No. 3   |                                     | 6.60                | 13.20              | W T         |
|                           | 7¾ in.         | Rolled Edge, Low Foot... No. 4   |                                     | 4.20                | 8.40               | W T         |
| <b>SAUCE BOATS</b>        |                |                                  |                                     |                     |                    |             |
|                           | 2¼ oz.         | Rolled Edge, Individual... No. 3 |                                     | 4.00                | 8.00               | W T         |
| 4                         | 4 oz.          | Rolled Edge, Medium.... No. 2    |                                     | 5.75                | 10.60              | W T         |
| 3                         | 13 oz.         | Rolled Edge, Large..... No. 1    |                                     | 7.50                | 14.00              | W T         |
| <b>SUGARS</b>             |                |                                  |                                     |                     |                    |             |
| 14                        | oz.            | Rolled Edge, Covered.... No. 1   |                                     | 6.00                | 12.50              |             |
| 17                        | 10 oz.         | Rolled Edge, Covered.... No. 2   |                                     | 5.00                | 10.60              |             |
|                           | 7 oz.          | Rolled Edge, Covered.... No. 3   |                                     | 4.00                | 9.00               |             |
|                           | 4 oz.          | Rolled Edge, Covered.... No. 4   |                                     | 2.50                | 5.00               |             |
|                           | 16 oz.         | Chicago, Covered..... No. 1      |                                     | 7.20                | 15.00              |             |
| 18                        | 10 oz.         | Chicago, Covered..... No. 2      |                                     | 5.40                | 12.00              | W T         |
| 19                        | 4 oz.          | Ford Tray.....                   |                                     | 2.00                | 4.40               | W T         |
| 20                        | 11 oz.         | Empire Covered.....              |                                     | 5.20                | 10.80              | W T         |
| <b>SUGAR COVERS ONLY</b>  |                |                                  |                                     |                     |                    |             |
|                           |                | Chicago and Empire.....          | ¼ of list price for sugar and cover |                     |                    |             |
|                           |                | Rolled Edge.....                 | ½ of list price for sugar and cover |                     |                    |             |



| Illustration No. | Actual Measure | ARTICLES AND DESCRIPTIONS | Trade Size | White List Per Doz. | Dec. List Per Doz. | *Production |
|------------------|----------------|---------------------------|------------|---------------------|--------------------|-------------|
|------------------|----------------|---------------------------|------------|---------------------|--------------------|-------------|

**BAKERS**

|   |            |                    |           |        |        |     |
|---|------------|--------------------|-----------|--------|--------|-----|
|   | 5 1/4 in.  | Rolled Edge.....   | 2 1/2 in. | \$1.50 | \$3.80 | W T |
|   | 5 3/4 in.  | Rolled Edge.....   | 3 in.     | 1.60   | 3.90   |     |
| 1 | 6 1/2 in.  | Rolled Edge.....   | 4 in.     | 2.00   | 4.50   |     |
|   | 7 1/4 in.  | Rolled Edge.....   | 5 in.     | 2.50   | 5.20   | W   |
|   | 8 1/4 in.  | Rolled Edge.....   | 6 in.     | 3.25   | 6.60   |     |
|   | 8 3/4 in.  | Rolled Edge.....   | 7 in.     | 4.20   | 8.20   |     |
| 2 | 10 in.     | Rolled Edge.....   | 8 in.     | 5.20   | 9.80   | W T |
| 9 | 11 7/8 in. | Rolled Edge.....   | 10 in.    | 8.00   | 14.20  | W   |
|   | 5 1/4 in.  | Quarter Thick..... | 2 1/2 in. | 1.50   | 3.80   | W   |
|   | 5 3/4 in.  | Quarter Thick..... | 3 in.     | 1.60   | 3.90   | W   |
|   | 6 3/4 in.  | Quarter Thick..... | 4 in.     | 2.00   | 4.50   |     |
|   | 7 3/4 in.  | Quarter Thick..... | 5 in.     | 2.50   | 5.20   |     |
| 3 | 7 7/8 in.  | Quarter Thick..... | 6 in.     | 3.25   | 6.60   |     |
|   | 8 7/8 in.  | Quarter Thick..... | 7 in.     | 4.20   | 8.20   |     |
|   | 9 7/8 in.  | Quarter Thick..... | 8 in.     | 5.50   | 10.40  | W   |

**BUTTERS**

|    |           |                  |           |     |      |     |
|----|-----------|------------------|-----------|-----|------|-----|
|    | 3 in.     | Rolled Edge..... | 2 in.     | .50 | 1.60 | W T |
| 14 | 3 1/2 in. | Rolled Edge..... | 2 1/2 in. | .50 | 1.60 |     |
| 13 | 2 1/2 in. | Thick.....       | 2 in.     | .50 | 1.60 |     |
|    | 3 in.     | Thick.....       | 2 1/2 in. | .50 | 1.60 |     |

**CUSTARD**

|   |     |                          |  |      |      |     |
|---|-----|--------------------------|--|------|------|-----|
| 7 | oz. | Rolled Edge, Unhandled.. |  | 1.80 | 4.00 | W T |
|---|-----|--------------------------|--|------|------|-----|

**ICE CREAMS**

|    |       |                  |           |      |      |  |
|----|-------|------------------|-----------|------|------|--|
| 19 | 4 in. | Rolled Edge..... | 3 1/2 in. | .90  | 2.30 |  |
|    | 5 in. | Rolled Edge..... | 4 1/2 in. | 1.00 | 2.50 |  |

**ICE TUBS**

|    |       |                          |       |       |       |   |
|----|-------|--------------------------|-------|-------|-------|---|
|    | 8 pt. | Ice Tubs, Plain Banded.. | No. 1 | 20.00 | 37.50 | W |
| 12 | 6 pt. | Ice Tubs, Plain Banded.. | No. 2 | 16.00 | 30.50 |   |

**MUSTARDS**

|    |       |   |       |      |      |     |
|----|-------|---|-------|------|------|-----|
|    | 5 oz. | Seneca, Unhandled.....                      | No. 1 | 2.75 | 5.90 |     |
| 18 | 3 oz. | Seneca, Unhandled.....                      | No. 2 | 2.40 | 5.00 | W T |
|    |       | Cover Only, Seneca, One-Third complete list |       |      |      |     |

**DISH, PICKLES**

|    |           |                                    |  |      |      |     |
|----|-----------|------------------------------------|--|------|------|-----|
| 15 | 7 3/4 in. | Shell Oval, Plain.....             |  | 3.60 | 8.40 |     |
| 16 | 4 in.     | Relish, Round Edge, H'd.           |  | 1.40 | 3.20 |     |
|    | 3 in.     | Honey or Jelly Dish, 1 1/4 oz..... |  | .80  | 2.20 | W T |

**PITCHERS**

|    |           |                        |     |       |       |     |
|----|-----------|------------------------|-----|-------|-------|-----|
|    | 6 pt.     | Rolled Edge.....       | 6s  | 25.00 | 48.00 | W   |
|    | 3 1/2 pt. | Rolled Edge.....       | 24s | 12.00 | 24.00 | W   |
| 8  | 2 1/4 pt. | Rolled Edge.....       | 30s | 9.00  | 18.00 | W T |
|    | 1 1/4 pt. | Rolled Edge.....       | 36s | 6.00  | 12.00 | W T |
| 12 | 6 oz.     | Rolled Edge.....       | 42s | 4.50  | 9.00  | W T |
|    | 6 oz.     | Rolled Edge.....       | 48s | 2.75  | 5.50  | W T |
|    | 4 oz.     | Rolled Edge.....       | 52s | 1.90  | 4.50  | W T |
|    | 3 oz.     | Rolled Edge.....       | 54s | 1.80  | 4.20  | W T |
|    | 2 oz.     | Rolled Edge.....       | 60s | 1.60  | 3.80  | W T |
| 6  | 2 1/2 pt. | Hall Boy.....          | 24s | 9.00  | 18.00 | W   |
|    | 1 1/4 pt. | Hall Boy.....          | 30s | 6.00  | 12.00 | W   |
|    | 24 oz.    | Empire.....            | 30s | 7.50  | 15.00 | W T |
| 7  | 20 oz.    | Empire.....            | 36s | 5.40  | 10.80 | W T |
|    | 11 oz.    | Empire.....            | 42s | 4.40  | 8.80  | W T |
|    | 6 1/2 oz. | Empire.....            | 46s | 2.75  | 5.50  | W T |
|    | 4 oz.     | Empire.....            | 54s | 2.30  | 4.80  | W T |
|    | 2 1/2 oz. | Empire.....            | 56s | 1.80  | 4.20  | W T |
|    | 1 3/4 oz. | Empire.....            | 60s | 1.60  | 3.80  | W T |
|    | 4 oz.     | Empire, Unhandled..... | 54s | 1.90  | 4.00  |     |

\*Produced regularly in White (W) and Irotan (T) as marked.

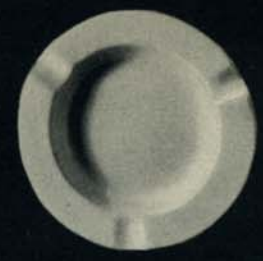
0



5



2



1



7



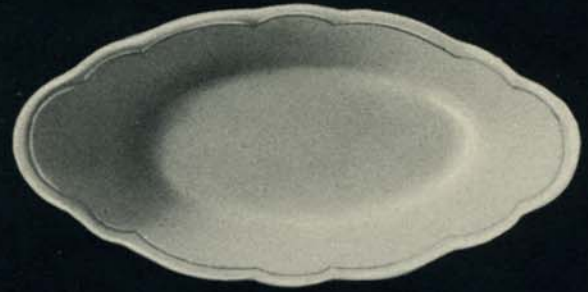
6



3



8



4



11



9



12



13



14



10

| Illustration No. | Actual Measure | ARTICLES AND DESCRIPTIONS | Trade Size | White List Per Doz. | Dec. List Per Doz. | *Production |
|------------------|----------------|---------------------------|------------|---------------------|--------------------|-------------|
|------------------|----------------|---------------------------|------------|---------------------|--------------------|-------------|

TEA POTS

|    |       |                          |  |        |         |     |
|----|-------|--------------------------|--|--------|---------|-----|
| 10 | 8 oz. | Empire (Individual)..... |  | \$7.50 | \$15.00 | W T |
|----|-------|--------------------------|--|--------|---------|-----|

ASH TRAYS

|   |           |                    |  |      |      |     |
|---|-----------|--------------------|--|------|------|-----|
| 1 | 5 3/8 in. | Rolled, No. 1..... |  | 2.00 | 5.00 | W T |
|   | 4 3/8 in. | Rolled, No. 2..... |  | 1.65 | 3.50 |     |

CELERY TRAYS

|   |            |                          |       |      |       |     |
|---|------------|--------------------------|-------|------|-------|-----|
|   | 12 1/4 in. | Quarter Thick Plain..... | No. 1 | 7.50 | 16.00 | W T |
| 3 | 10 in.     | Quarter Thick Plain..... | No. 2 | 6.00 | 13.20 | W T |
|   | 7 1/2 in.  | Quarter Thick Plain..... | No. 3 | 4.00 | 9.00  | W T |

CAKE COVERS

|   |           |                    |  |      |      |   |
|---|-----------|--------------------|--|------|------|---|
|   | 6 1/8 in. | Plain Pierced..... |  | 3.50 | 7.20 |   |
| 9 | 6 1/4 in. | Shoulder.....      |  | 3.50 | 7.20 | W |

MATCH STANDS

|   |  |                     |  |      |       |     |
|---|--|---------------------|--|------|-------|-----|
| 2 |  | Rolled, Hooded..... |  | 7.00 | 14.50 |     |
|   |  | Rolled, Safety..... |  | 4.50 | 9.00  | W T |

MUGS

|    |           |                          |  |      |      |     |
|----|-----------|--------------------------|--|------|------|-----|
| 12 | 7 1/2 oz. | Puritan Weld Handle..... |  | 3.00 | 6.00 | W T |
| 11 | 8 oz.     | Soda Mug, Handled.....   |  | 2.80 | 5.60 |     |
|    | 8 oz.     | Soda Mug, Unhandled..... |  | 2.40 | 4.80 |     |
|    | 7 1/2 oz. | Hartford.....            |  | 3.00 | 6.00 |     |
|    | 5 oz.     | Seneca, Handled.....     |  | 2.50 | 5.00 | W T |

RAMIKINS

|   |           |             |       |      |      |   |
|---|-----------|-------------|-------|------|------|---|
| 8 | 3 1/4 in. | Fluted..... | No. 1 | 1.30 | 2.75 | W |
|   | 2 1/2 in. | Fluted..... | No. 2 | 1.10 | 2.40 |   |

COMPORTS

|   |           |                         |       |                   |  |  |
|---|-----------|-------------------------|-------|-------------------|--|--|
| 6 | 8 in.     | Round Edge, High Foot.. | No. 3 | Quoted on request |  |  |
|   | 6 3/4 in. | Round Edge, High Foot.. | No. 4 | Quoted on request |  |  |
|   | 6 in.     | Round Edge, High Foot.. | No. 5 | Quoted on request |  |  |
| 5 | 6 1/2 in. | St. Paul, Low Foot..... |       | Quoted on request |  |  |

CANDLE STICK

|   |           |                          |  |                   |  |  |
|---|-----------|--------------------------|--|-------------------|--|--|
| 7 | 4 1/2 in. | Quarter Thick, Handled.. |  | Quoted on request |  |  |
|   | 4 1/2 in. | Quarter Thick, Unhandled |  | Quoted on request |  |  |

\*Produced regularly in White (W) and Irotan (T) as marked.

# Personalized CHINA

★ AS INDIVIDUAL AS YOUR OWN SIGNATURE ★

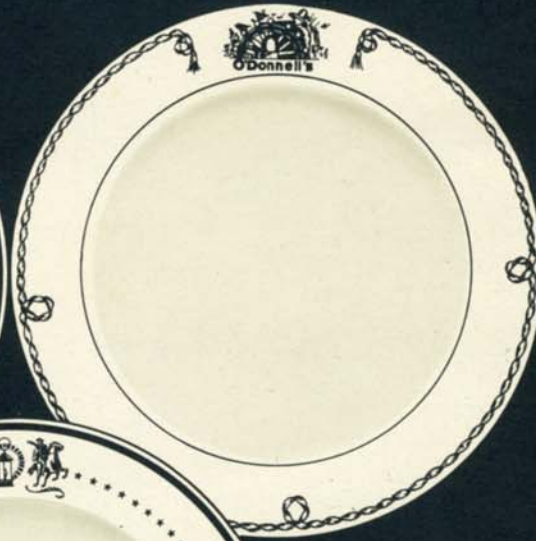


EDELWEISS

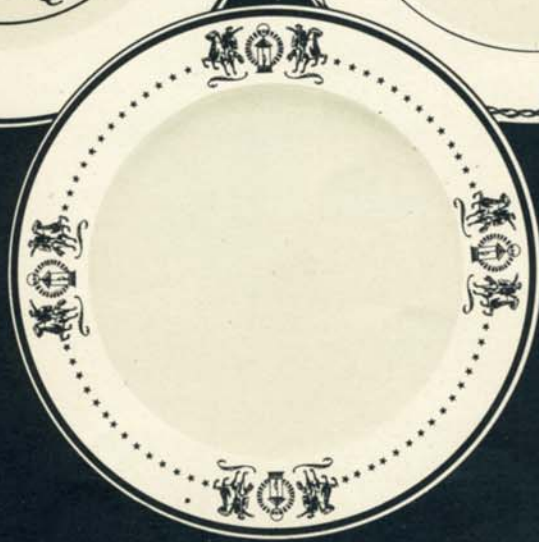
Iroquois China can be decorated with exclusive personal patterns at a cost within reach of all. A complete new design of whatever character is desired can be created for the exclusive use of the consumer, even though the quantity purchase need not be necessarily large. Make your china as typically yours as your own favorite recipe. Your own decorative ideas can be carried out—under the new "Personalized China Service" plan.



CORTILE



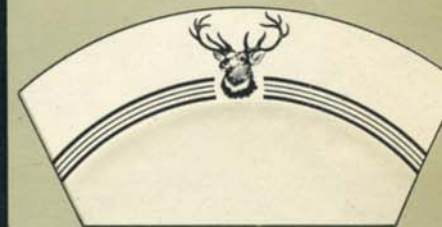
O'DONNELL'S



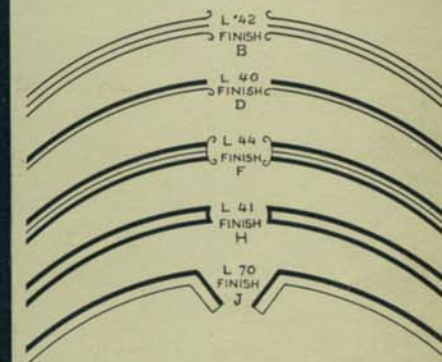
## CRESTS . . .

Of course, you want your China Service to be different—your own crest or name on every piece—your own color scheme—your own pattern. China as personal as your handshake.

A few suggestions are illustrated below.



## Line Finishes for Crests . . .



DECORATING SUGGESTIONS FOR SHAL-O-RIM AND RIPPLEWARE



RIPPLETONE



DRAKE



1008 - L-1



2042



CONSTELLATION



1819 - L-94



1000 - L233



L233



2026 - KAY



ELEANOR



L266



3014L

BEAUTY AT LOW COST

TWO COLOR PRINTS



NEW YORKER



EUGENIA



LORAINE



INDIAN



AUTUMN



ALLISON



FANTASY

DECORATED

*Blu-Rim*  
WARE.....

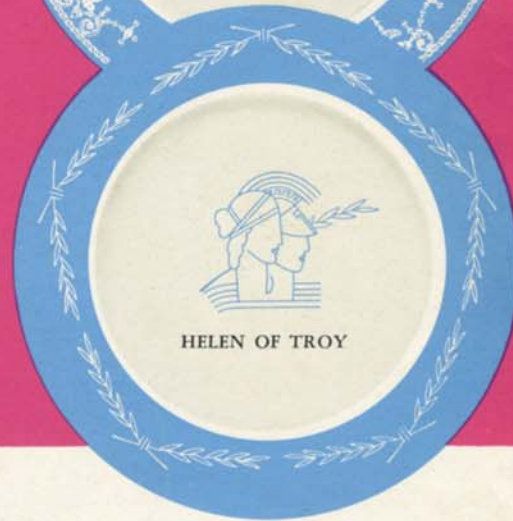
A few samples of a wide selection of treatments available . . . . .



1070



1077



HELEN OF TROY

With Blu-Rim designs you create an atmosphere—a distinctiveness, a charm that reflects all the characteristics of beauty and elegance at a cost surprisingly low.

**IROQUOIS**  
*China*



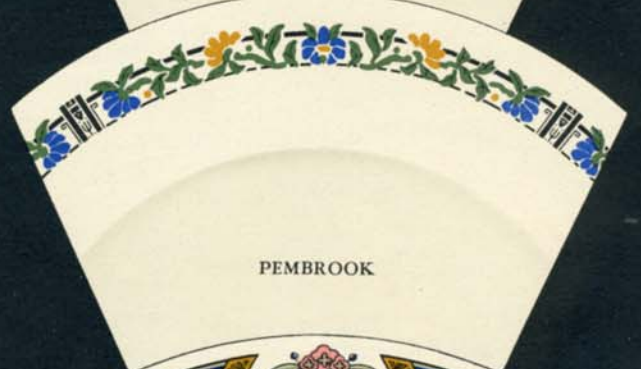
TUSCANY



FLORENCE



IRENE



PEMBROOK



SHARON



LARCHMONT



BOUQUET-T



GRACE



IRIS



CLUNY



CHATHAM

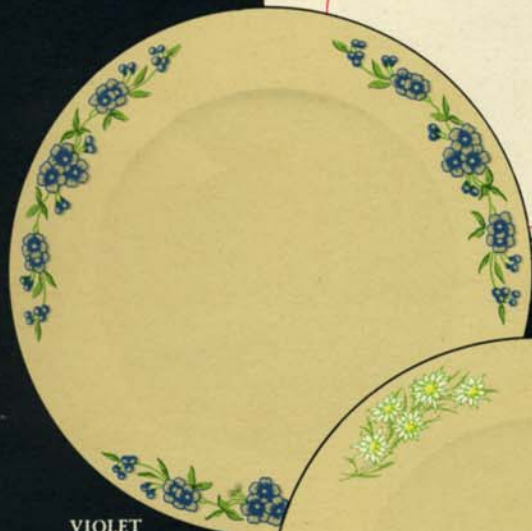
Iroquois decalcomania creations remain the pride of their users. A service of any one of the many designs offered in this line will add beauty to any surrounding.

ATTRACTIVE COLORS

SERVICE PLATES



RHAPSODY



VIOLET



EDELWEISS



MAYFIELD

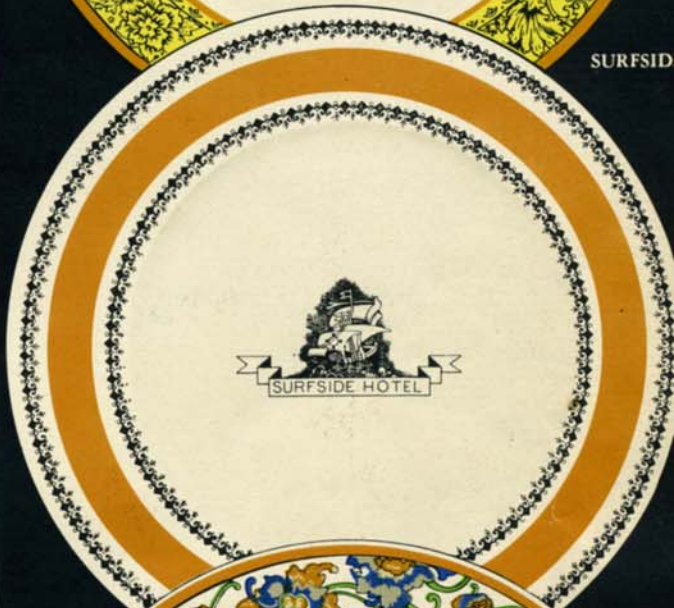


TULIP

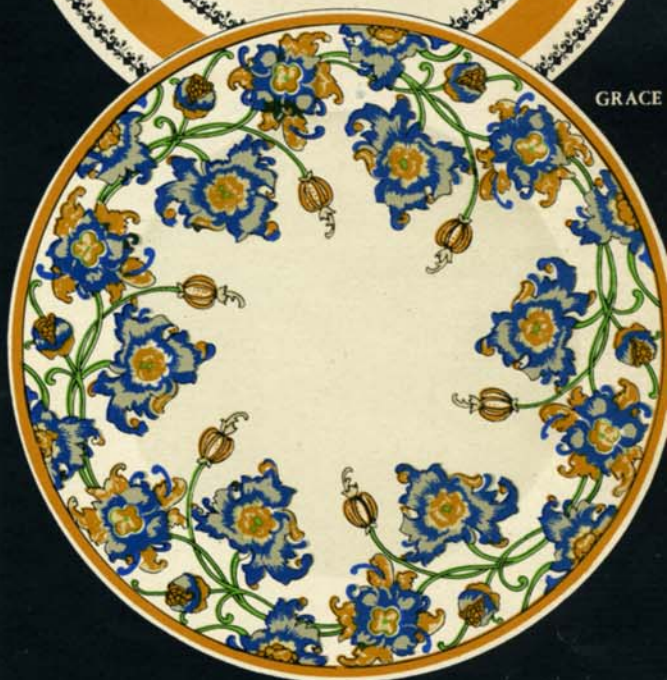
NAVAJO



1070-L



SURFSID



GRACE

The artistic design of Iroquois Service Plates makes possible their use with any modern china service.



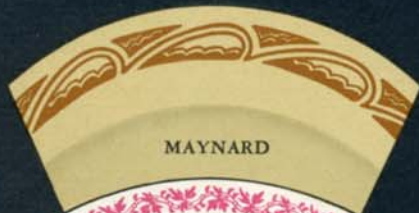
*Variety* is the keynote of these beautiful print border designs available in a wide range of colors to suit the most fastidious taste.



MILLICENT



VIKING



MAYNARD



1094



3014



1008



CHESAPEAKE



1039



1001



2022



ROSELINE



BELMONT



CORILAN



1000



GREENWICH



HELEN OF TROY



HAWTHORNE



THESE COLORFUL PRINT BORDER DESIGNS



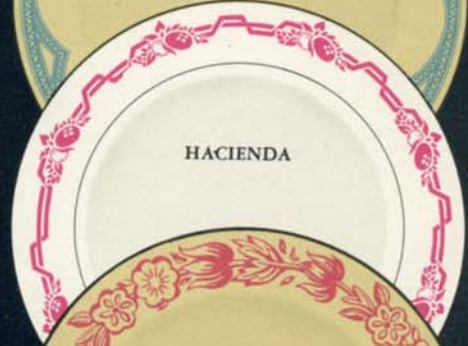
1070



1077



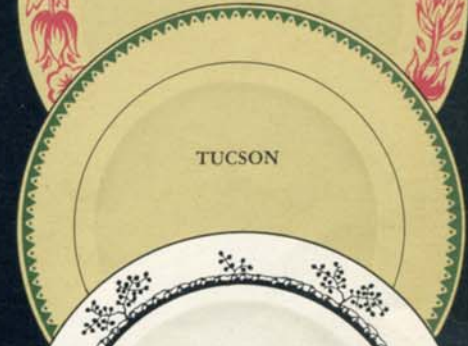
CAROLINIAN



HACIENDA



SPRINGTIME



TUCSON



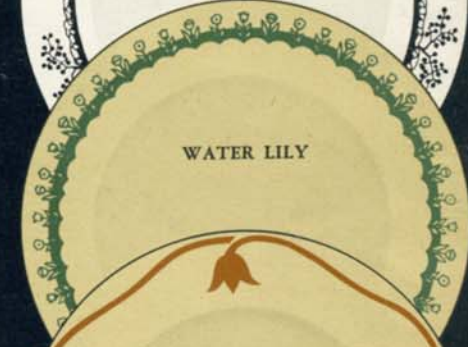
2041



THISTLE



CHANSONETTE



WATER LILY



DELPH

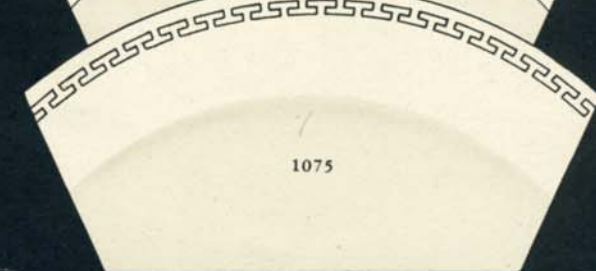
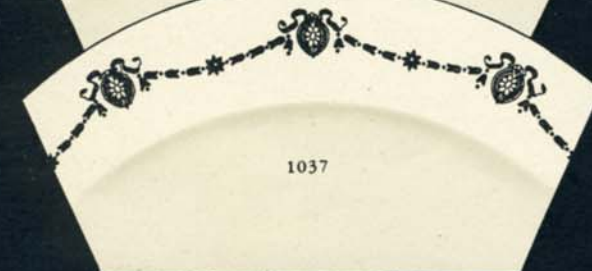
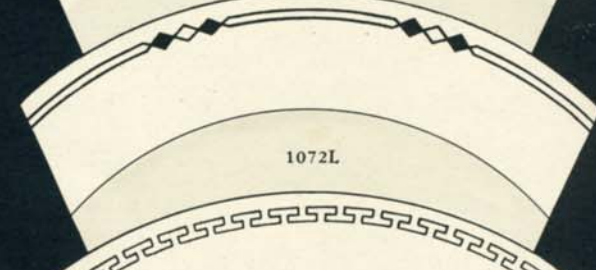
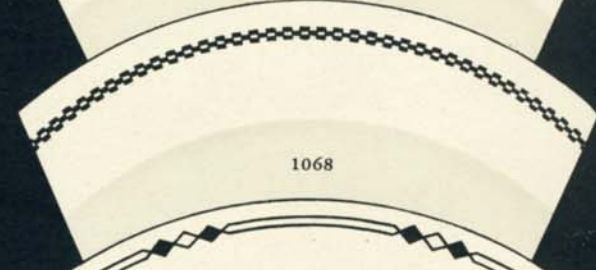
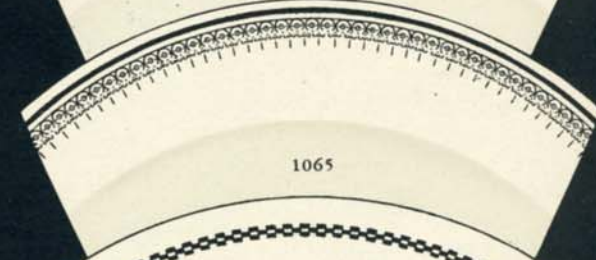
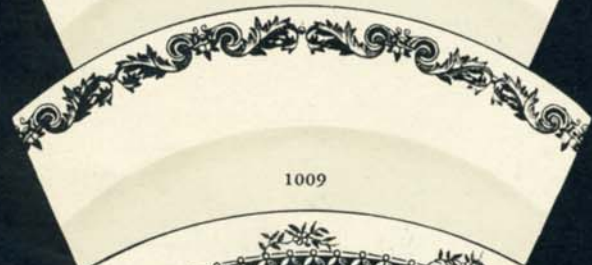


GEORGIAN



CATHAY

SOME OF THE ADDITIONAL PATTERNS

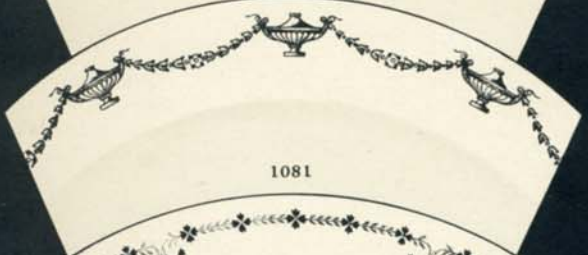




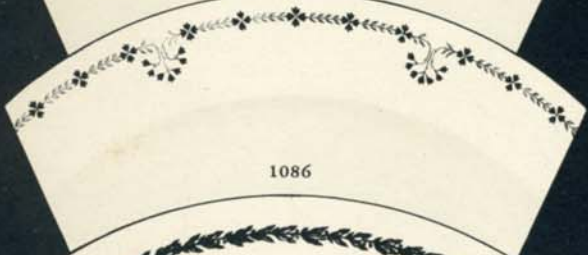
1078



1080



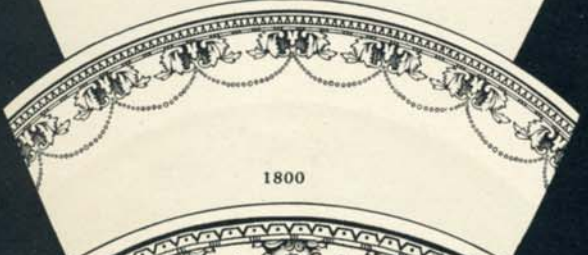
1081



1086



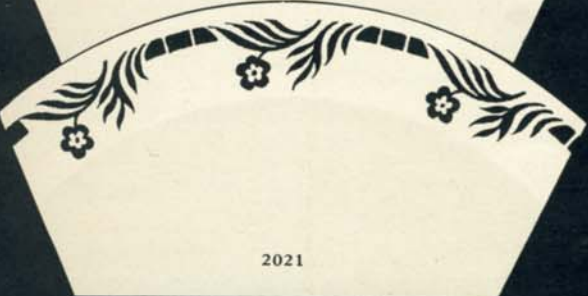
1088



1800



1813



2021



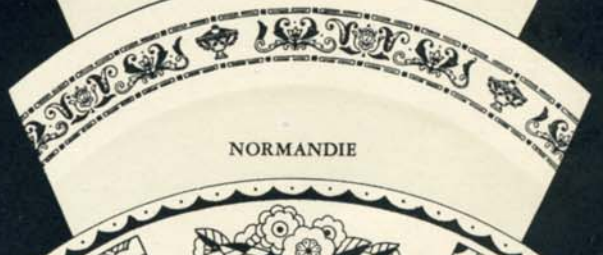
3004L



3021L



5002LD



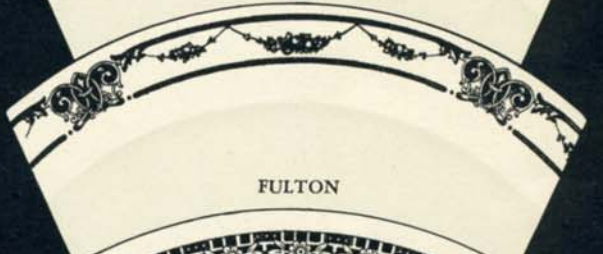
NORMANDIE



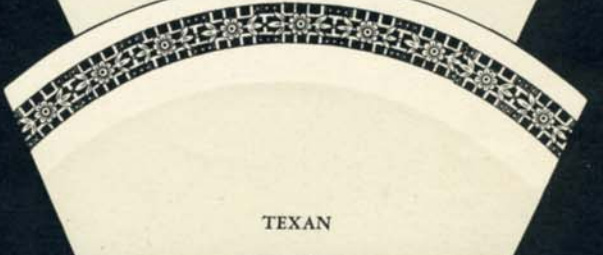
NEW YORKER



VISTA



FULTON



TEXAN



L-1



L-2



L-7



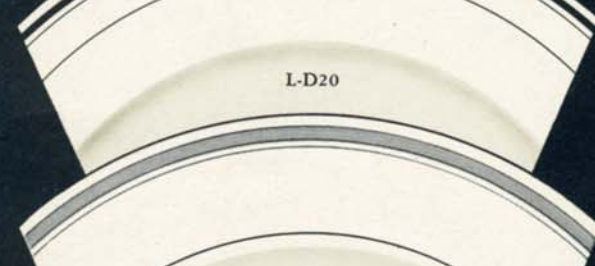
L-10



L-13



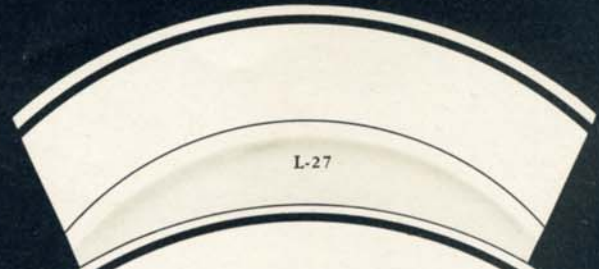
L-16



L-D20



L-22  
Wash Band



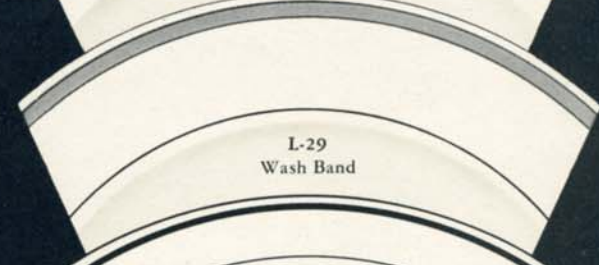
L-27



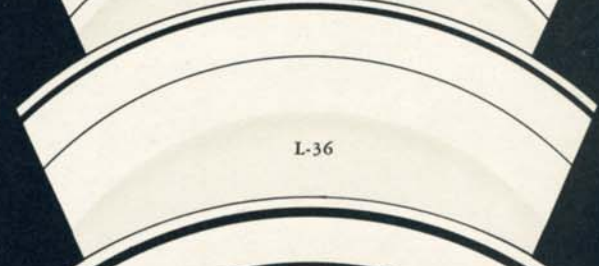
L-27-A



L-28



L-29  
Wash Band



L-36



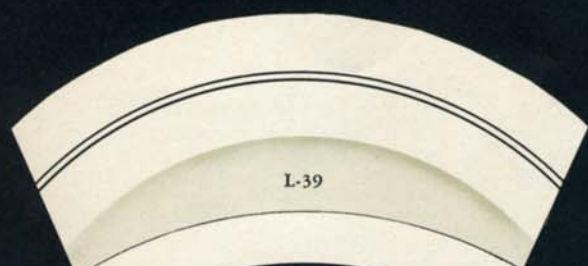
L-36-A



L-37



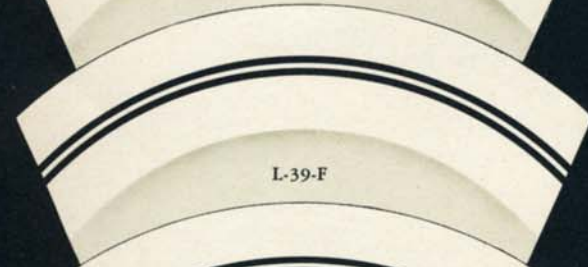
L-37-A



L-39



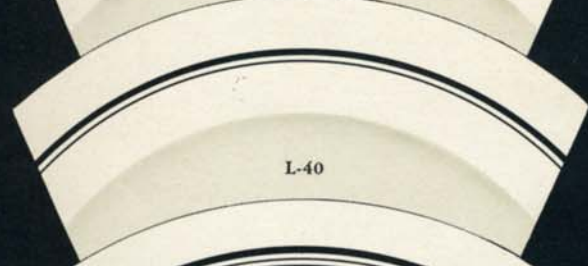
L-70



L-39-F



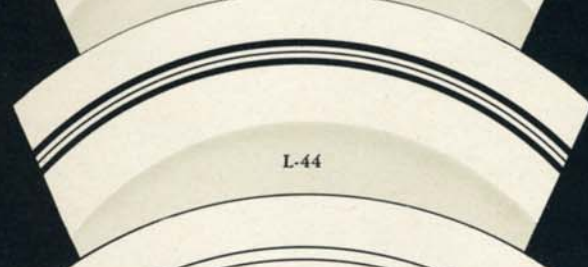
L-94



L-40



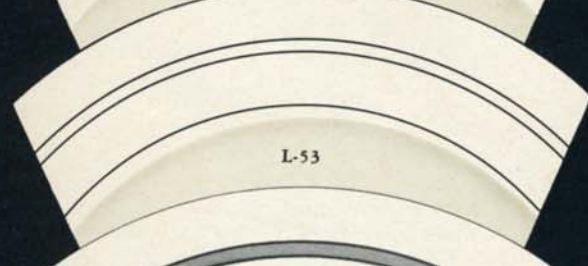
L-108



L-44



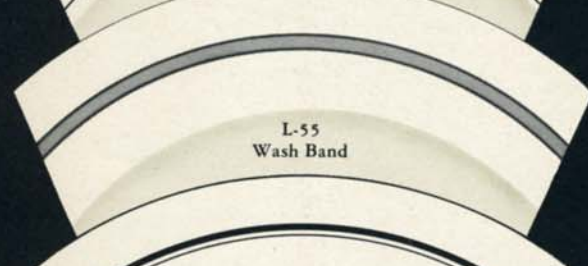
L-113



L-53



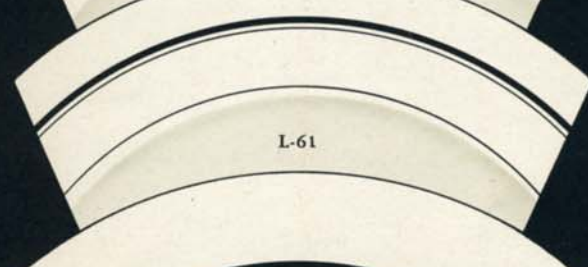
L-218B



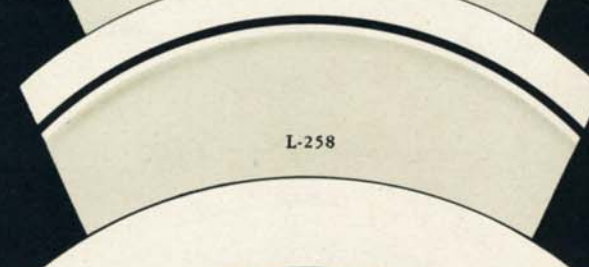
L-55  
Wash Band



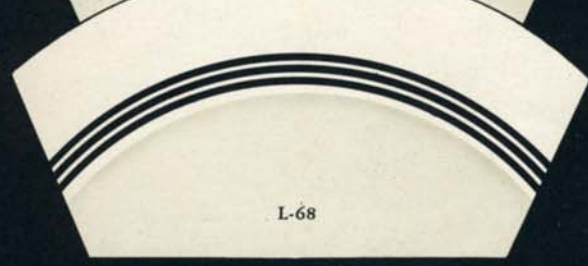
L-257



L-61



L-258



L-68



L-265

# Exclusive! Modern! RIPLEWARE ...



1



2



5



3



4

## RIPLEWARE

| Illus-<br>tration<br>No. | Actual<br>Measure | ARTICLES AND<br>DESCRIPTORS      | Trade<br>Size | White<br>List<br>Per Doz. | Dec.<br>List<br>Per Doz. | *Pro-<br>duc-<br>tion |
|--------------------------|-------------------|----------------------------------|---------------|---------------------------|--------------------------|-----------------------|
|                          | 5 1/4 in.         | Baker, R.E.....                  | 2 1/2 in.     | \$1.50                    | \$3.80                   | W                     |
|                          | 8 1/4 in.         | Baker, R.E.....                  | 6 in.         | 3.25                      | 7.00                     |                       |
| 10                       | 10 in.            | Baker, R.E.....                  | 8 in.         | 5.20                      | 10.80                    | W                     |
|                          | 7 oz.             | Bouillons, Lincoln Tea, Hddl..   | .....         | 2.50                      | 5.30                     | W                     |
|                          | 7 oz.             | Bouillons, Lincoln Tea, U. H.... | .....         | 1.60                      | 3.60                     | W                     |
|                          | 3 in.             | Butters, Ind. R.E.....           | 2 in.         | .50                       | 1.50                     |                       |
|                          | 10 in.            | Celery Tray.....                 | No. 2         | 6.00                      | 13.20                    | W                     |
|                          | 7 1/2 in.         | Celery Tray.....                 | No. 3         | 4.00                      | 9.00                     |                       |
|                          | 10 in.            | Compt. Plate, Medium.....        | .....         | 7.50                      | 15.00                    | W T                   |
| 6                        | 7 oz.             | Cup, Tea Troy (Tall).....        | .....         | 2.00                      | 4.40                     | W                     |
| 7                        | 7 oz.             | Cup, Tea Lincoln (Coroid).....   | .....         | 2.00                      | 4.40                     | W                     |
| 8                        | 3 1/2 oz.         | Cup, AD Troy.....                | .....         | 1.40                      | 3.30                     | W                     |
|                          | 6 oz.             | Custard, Troy.....               | .....         | 1.80                      | 4.00                     | W                     |
|                          | 7 3/8 in.         | Dishes, R.E.....                 | 4 in.         | 1.80                      | 4.20                     | W                     |
|                          | 9 1/2 in.         | Dishes, R.E.....                 | 6 in.         | 2.75                      | 6.00                     | W                     |
| 3                        | 10 3/4 in.        | Dishes, R.E.....                 | 7 in.         | 3.20                      | 7.20                     | W                     |
|                          | 11 7/8 in.        | Dishes, R.E.....                 | 8 in.         | 4.20                      | 9.00                     | W                     |
|                          | 13 3/4 in.        | Dishes, R.E.....                 | 10 in.        | 7.00                      | 14.40                    | W                     |
|                          | 6 oz.             | Egg Cups, Troy.....              | .....         | 1.80                      | 4.00                     | W                     |
|                          | 4 1/2 in.         | Fruits, R.E.....                 | 3 in.         | .95                       | 2.30                     | W                     |
|                          | 5 in.             | Fruits.....                      | 3 1/2 in.     | 1.00                      | 2.50                     | W                     |
|                          | 6 3/8 in.         | Grapefruit, R.E.....             | No. 1         | 2.25                      | 4.90                     | W                     |
|                          | 9 oz.             | Jugs, Hddl.....                  | 46s           | 3.25                      | 6.50                     | W                     |
| 9                        | 4 oz.             | Jugs, Hddl.....                  | 54s           | 2.30                      | 4.80                     | W                     |
|                          | 2 oz.             | Jugs, Unhddl.....                | 60s           | 1.60                      | 3.40                     | W                     |
|                          | 3 1/2 oz.         | Mustard, Cov'd.....              | No. 2         | 2.40                      | 5.00                     | W                     |
|                          | 5 in.             | Nappy, R.E.....                  | 3 in.         | 2.00                      | 4.30                     | W                     |
|                          | 5 3/4 in.         | Nappy, R.E.....                  | 4 in.         | 2.50                      | 5.00                     | W                     |
|                          | 5 3/4 in.         | Oatmeals, R.E., 10 oz.....       | No. 2         | 2.15                      | 4.80                     | W                     |
|                          | 5 1/2 in.         | Plates, R.E.....                 | 3 in.         | 1.00                      | 2.50                     | W                     |
|                          | 6 1/4 in.         | Plates, R.E.....                 | 4 in.         | 1.30                      | 3.00                     | W                     |
|                          | 7 1/8 in.         | Plates, R.E.....                 | 5 in.         | 1.70                      | 3.70                     | W                     |
|                          | 8 1/8 in.         | Plates, R.E.....                 | 6 in.         | 2.20                      | 4.60                     | W                     |
| 5                        | 9 in.             | Plates, R.E.....                 | 7 in.         | 2.75                      | 5.50                     | W                     |
|                          | 10 in.            | Plates, R.E.....                 | 8 in.         | 3.25                      | 6.30                     | W                     |
|                          | 9 in.             | Soup Plates, R.E. Rim.....       | 7 in.         | 3.10                      | 6.00                     | W                     |
|                          | 6 in.             | Saucers, Tea.....                | .....         | 1.20                      | 2.70                     | W                     |
|                          | 4 7/8 in.         | Saucers, AD.....                 | .....         | 1.00                      | 2.50                     | W                     |
| 4                        | 10 oz.            | Sugars, Cov'd.....               | No. 2         | 5.50                      | 12.00                    | W                     |

Extra Mustard Covers list at 1/2 of complete price  
Extra Sugar Covers list at 1/4 of complete price

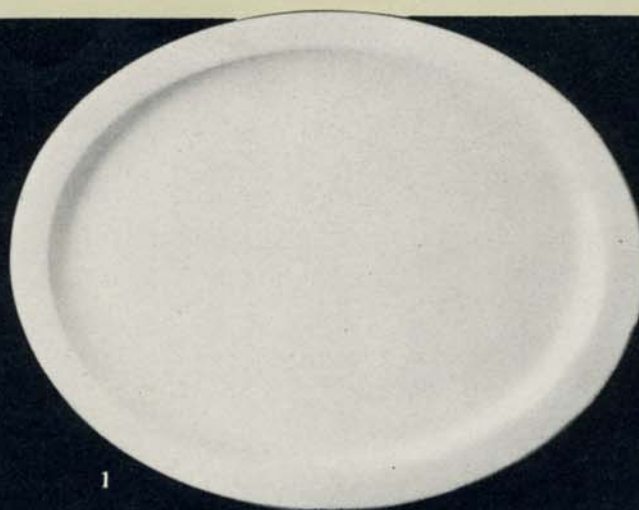
\*Produced regularly in White (W) and Iroton (T) as marked.

# SHAL-O-RIM WARE

IROQUOIS  
*China*



6



1



3



7



2

Shal-O-Rim provides all the advantages of modern stream-line treatment—maximum service space and minimum waste space in storage bins. The ideal ware for service in tea rooms, luncheonettes, and wherever small tables are used. Attractive, too, for more formal use—because of the definitely new touch that Shal-O-Rim gives.



8



9

## SHAL-O-RIM WARE

Illus- Actual  
tration Measure  
No.

ARTICLES AND  
DESCRIPTIONS

White  
List  
Per Doz.

Dec.  
List  
Per Doz.

\*Pro-  
duc-  
tion

|   |                      |                            |        |        |     |
|---|----------------------|----------------------------|--------|--------|-----|
|   | 5 in.                | #1 Fruit.....              | \$1.20 | \$2.80 | W T |
| 3 | 4 $\frac{5}{8}$ in.  | #2 Fruit.....              | 1.10   | 2.60   | W T |
|   | 7 $\frac{1}{4}$ in.  | #4 Platters.....           | 2.20   | 5.00   | W T |
|   | 8 in.                | #5 Platters.....           | 2.50   | 5.40   | W T |
|   | 8 $\frac{7}{8}$ in.  | #6 Platters.....           | 3.10   | 6.50   | W T |
| 1 | 9 $\frac{5}{8}$ in.  | #7 Platters.....           | 3.70   | 7.20   | W T |
|   | 11 $\frac{3}{8}$ in. | #8 Platters.....           | 4.90   | 9.40   | W T |
|   | 13 $\frac{3}{8}$ in. | #10 Platters.....          | 7.30   | 13.60  | W T |
|   | 6 in.                | #1 Tea Saucers.....        | 1.20   | 2.70   | W T |
| 2 | 5 $\frac{1}{4}$ in.  | #2 Tea Saucers.....        | 1.20   | 2.70   | W T |
|   | 5 $\frac{3}{4}$ in.  | #3 Tea Saucers.....        | 1.20   | 2.70   | W T |
|   | 5 $\frac{1}{2}$ in.  | #3 Plates.....             | 1.10   | 2.70   | W T |
|   | 6 $\frac{1}{2}$ in.  | #4 Plates.....             | 1.40   | 3.20   | W T |
|   | 7 $\frac{1}{4}$ in.  | #5 Plates.....             | 1.80   | 3.90   | W T |
|   | 8 $\frac{1}{4}$ in.  | #6 Plates.....             | 2.30   | 4.80   | W T |
| 2 | 9 in.                | #7 Plates.....             | 2.90   | 5.70   | W T |
|   | 9 $\frac{3}{8}$ in.  | #8 Plates.....             | 3.35   | 6.50   | W T |
|   | 9 $\frac{1}{2}$ in.  | 3 Compt. Grill Plates..... | 5.00   | 10.00  | W T |

\*Produced regularly in White (W) and Irotan (T) as marked.



# CUP AND SAUCER COMBINATIONS

| NAME OF CUP          | Capacity | Comparative Weight | NAMES OF SAUCERS                    |                                      |   |
|----------------------|----------|--------------------|-------------------------------------|--------------------------------------|---|
|                      |          |                    | Top of Cup Nests Inside Saucer Foot | Top of Cup Nests Outside Saucer Foot | Cup Fits Saucer Well But Does Not Stack |
| Auburn, W. H.        | 6 oz.    | Heavy              | Omaha                               | R. E.                                | Thick                                   |
| Albany W. H.         | 7 oz.    | Light              | Albany<br>Omaha                     | *Boston<br>R. E.                     | #1 S-O-R<br>#2 S-O-R                    |
| Boardman W. H.       | 7 oz.    | Medium             | Boardman<br>Davis                   |                                      | Conic<br>#3 S-O-R                       |
| *Boston Light Handle | 7½ oz.   | Thin               | Albany                              | *Boston                              | *Illinois<br>#1 S-O-R                   |
| Chicago B. H.        | 7 oz.    | Heavy              | Omaha                               | R. E.                                | Thick                                   |
| *Cleveland B. H.     | 7 oz.    | Light              | Albany<br>Omaha                     | R. E.<br>*Boston                     | #1 S-O-R<br>#2 S-O-R                    |
| Conic W. H.          | 7 oz.    | Heavy              | Boardman                            |                                      | Conic                                   |
| Davenport W. H.      | 8 oz.    | Heavy              | Davenport                           |                                      |   |
| Dixie W. H.          | 7 oz.    | Heavy              | Davis<br>Boardman<br>#3 S-O-R       |                                      | Conic                                   |
| Eureka W. H.         | 7 oz.    | Heavy              | Omaha                               | R. E.                                | Thick                                   |
| Eureka B. H.         | 7 oz.    | Heavy              | Omaha                               | R. E.                                | Thick                                   |
| *Globe W. H.         | 7 oz.    | Medium             |                                     |                                      | Omaha<br>R. E.<br>Thick                 |
| Illinois B. H.       | 6 oz.    | Light              |                                     |                                      | #2 S-O-R<br>Illinois                    |
| Manhattan W. H.      | 7½ oz.   | Medium             | Omaha                               | R. E.                                | Thick<br>#1 S-O-R                       |
| *Morrison B. H.      | 7 oz.    | Medium             | #1 S-O-R<br>Davis                   |                                      | #2 S-O-R                                |
| Newton W. H.         | 7½ oz.   | Light              |                                     |                                      | Albany<br>Omaha<br>R. E.<br>Thick       |
| Oneida W. H.         | 8 oz.    | Heavy              | Davis<br>Boardman                   |                                      | Conic<br>#3 S-O-R                       |
| *Philadelphia W. H.  | 7½ oz.   | Heavy              |                                     |                                      | Omaha<br>R. E.<br>Thick                 |
| Qtr. Thick B. H.     | 7 oz.    | Light              | Albany<br>Omaha                     | #3 S-O-R                             | R. E.<br>Thick                          |
| St. Denis B. H.      | 9 oz.    | Thin               |                                     | R. E.                                | Omaha<br>Thick                          |
| *Saxon U. H.         | 8 oz.    | Heavy              |                                     |                                      | Omaha<br>R. E.<br>Thick                 |
| *Saxon B. H.         | 7 oz.    | Medium             | *Illinois<br>#1 S-O-R               |                                      | Albany                                  |
| Salina W. H.         | 7 oz.    | Heavy              |                                     |                                      | Omaha<br>R. E.<br>Thick<br>#1 S-O-R     |
| St. Paul B. H.       | 7½ oz.   | Light              |                                     |                                      | Omaha<br>R. E.                          |
| Utica W. H.          | 7 oz.    | Heavy              | #1 S-O-R                            |                                      | Omaha<br>R. E.<br>Thick<br>#2 S-O-R     |
| *Waldorf B. H.       | 8 oz.    | Heavy              |                                     | R. E.<br>Thick                       | Omaha<br>#2 S-O-R<br>#1 S-O-R           |
| *Ward B. H.          | 7 oz.    | Medium             | Boardman<br>Davis<br>#3 S-O-R       |                                      |   |

\*Cups and Saucers marked with asterisk are not stocked in white bisque.

# IROQUOIS CHINA CARTONS



The Iroquois China Company is rapidly converting to packing all ware in tough, sturdy cartons. Specific information regarding weight and quantities packed in our cartons is available on request.

## TERMS OF SALE

One per cent for cash in 15 days, net 30 days from date of invoice. Invoices may be paid twice each month at 1% cash discount if all invoices from first to fifteenth of month are paid on or before 25th of same month and invoices from 16th to 31st are paid on or before 10th of the following month.

All quotations are F.O.B. Syracuse (Solvay Station), N. Y. An extra charge is made for packing.

No orders or quotations are binding, unless they are accepted or confirmed by the home office at Syracuse, N. Y.

Due to uncertainty of manufacturing conditions decorated orders are accepted and invoiced subject to an overage or shortage of ten per cent and no definite time for shipment can be guaranteed.

Cancellations cannot be accepted on orders in the process of manufacture. We reserve the right to cancel any orders or parts of orders if working conditions make it impracticable to execute same.

We use the utmost care in packing our china for shipment. All goods are delivered to the transportation companies in good condition, and we cannot accept responsibility for them after leaving our hands.

Goods returned without our permission will not be accepted.

## CATALOG NUMBER 29



# INDEX

|   | Page<br>No. |                            | Page<br>No.    |
|---|-------------|----------------------------|----------------|
| Ash Tray.....                           | 8           | Ice Creams.....            | 7              |
| Bakers.....                             | 7           | Ice Tubs.....              | 7              |
| Bouillon Cups.....                      | 3           | Line Treatments.....       | 18, 19         |
| Bowls.....                              | 5           | Match Stands.....          | 8              |
| Blue-Rim Ware, Decorated.....           | 11          | Mugs.....                  | 8              |
| Blue Plates.....                        | 4           | Mustards.....              | 7              |
| Butters.....                            | 7           | Nappies.....               | 5              |
| Cake Covers.....                        | 8           | Oatmeals.....              | 5              |
| Candlestick.....                        | 8           | Package List.....          | 23             |
| Celery Trays.....                       | 8           | Personalized Patterns..... | 9              |
| Compartment Plates.....                 | 4           | Pickles.....               | 7              |
| Compartment Platters.....               | 4           | Pitchers.....              | 7              |
| Comports.....                           | 8           | Plates.....                | 4              |
| Creams.....                             | 6           | Plates, Soup.....          | 6              |
| Cream Pitchers.....                     | 7           | Platters (Dishes).....     | 5              |
| Crests.....                             | 9           | Prints.....                | 14, 15, 16, 17 |
| Cups.....                               | 2, 3        | Prints, 2 color.....       | 11             |
| Cup and Saucer Combinations.....        | 22          | Ramikins.....              | 8              |
| Custards (Egg Cups).....                | 3           | Rippleware Shapes.....     | 20, 21         |
| Dishes (Platters).....                  | 5           | Salads.....                | 6              |
| Decalcomania Patterns.....              | 12, 13      | Sauce Boats.....           | 6              |
| Egg Cups.....                           | 3           | Saucers.....               | 3              |
| Finished ends with lines and crests.... | 9           | Shal-O-Rim Shapes.....     | 21             |
| Fruit Saucers.....                      | 5           | Sugars.....                | 6              |
| Grapefruits.....                        | 5           | Terms of Sale.....         | 23             |

