



LAMBERTON CHINA

Celling
Price List

Oct. 1, 1941.

LAMBERTON CHINA

KEY TO 1934 PRICE LIST

MARKED COPYRIGHT 1931

ADD TEN POINTS FOR IVORY OR PLATINUM BLUE

(SEE NOTE BELOW)

White ware, undecorated		White List Net
Ivory ware, undecorated		White List plus 10%
Platinum Blue undecorated		White List plus 15%
Plain print borders, average	Scale 29 plus 20%	
Plain print borders, average and lines	" 29 plus 33-1/3%	
	Color Bands and Lines	Coin Gold Bands and Lines
One line band (approx. 1/16" wide)	Scale 25 less 10%	Scale 27 less 20%
Two pin lines	" 25 less 5%	" 27 less 20%
One line band and one pin line (or three pin lines)	" 25 net	" 27 less 10%
One line band and two pin lines (or four pin lines)	" 25 plus 5%	" 27 net
One line band and three pin lines (or five pin lines)	" 25 plus 10%	" 27 plus 5%
Two line band (approx. 1/8" wide)	" 25 net	" 27 net
Two line band and one pin line	" 25 plus 5%	" 27 plus 10%
Two line band and two pin lines	" 25 plus 10%	" 27 plus 15%
Two line band and three pin lines	" 25 plus 15%	" 27 plus 20%
Three line band (approx. 3/16" wide)	" 25 plus 5%	" 27 plus 15%
Three line band and one pin line	" 25 plus 10%	" 27 plus 20%
Three line band and two pin lines	" 25 plus 15%	" 27 plus 30%
Three line band and three pin lines	" 25 plus 20%	
Four line band (approx. 1/4" wide)	" 25 plus 15%	Gold Crest \$1.00 per doz.
Four line band and one pin line	" 25 plus 20%	Gold and Color Crests \$1.25 per doz.
Four line band and two pin lines	" 25 plus 25%	
Four line band and three pin lines	" 25 plus 30%	Sold Gold Handles \$2.50 per doz.
Six line band (approx. 3/8" wide)	" 25 plus 25%	Half Matt Gold Handles \$1.50 per doz.
Six line band and one pin line	" 25 plus 30%	Clouded Gold Handles \$0.90 per doz.
Six line band and two pin lines	" 25 plus 35%	Solid Color Handles \$1.25 per doz.
Six line band and three pin lines	" 25 plus 45%	
Wash band 1/8" to 3/16" and two or three pin lines	" 25 plus 15%	
Decal borders, average, with no bands or lines	" 23 plus 20%	
Decal borders, average, with band or lines	" 23 plus 30%	
Special Designs and Shapes	Prices on application.	
Crests, additional to above prices		One color \$0.30 per doz.
		Two color 40 per doz.
		Three color 50 per doz.
Crest only, no other decoration, on items listing up to \$3.50 per dozen. To the price of plain white or ivory add		One color \$0.50 per doz.
		Two color .60 per doz.
		Three color .75 per doz.
Crest only, no other decoration, on items listing over \$3.50 per dozen. To the price of plain white or ivory add		One color \$1.00 per doz.
		Two color 1.20 per doz.
		Three color 1.50 per doz.

ALL FORMER PRICE LISTS ARE HEREBY ANNULLED

NOTE—If white price is scale 25 plus 15%, Ivory price is 25 plus 25%
 If white price is scale 23 plus 15%, Ivory price is 23 plus 25%
 If white price is scale 23 plus 15%, Platinum price is 23 plus 25%
 10 Points higher for Ivory or Platinum Blue.

MARCH 15th, 1941

LAMBERTON CHINA



SCAMMELL CHINA COMPANY

WORKS AND MAIN OFFICE

TRENTON, N. J.

NEW YORK OFFICE AND SALESROOM: 70 EAST 45th STREET

CHICAGO OFFICE AND SALESROOM: 1582 MERCHANDISE MART

Copyright 1931
SCAMMELL CHINA COMPANY
Trenton, N. J.



FOREWORD

In presenting this illustrated price list to the trade it is with the thought of furnishing a reference book covering the scope and detail of our merchandise rather than any concerted effort to elaborate upon its merits.

To accomplish an accurate presentation of the virtues of Lambertton China would be impossible in any catalogue or printed page, for its true value can only be established by actual use.

Being manufactured by a method which is peculiar to Lambertton alone, it possesses those qualities which combine beauty and refinement with unusual durability in actual service.

Experience has taught the prudent buyer that regardless of the slightly higher initial cost, Lambertton China is so compounded that, due to the small replacements necessary, it is ultimately the least expensive china to use.

Lamberton China, in addition to being made in the regular white body is also available in the new popular ivory body, which lends a distinctive warmth and charm to any pattern.

The real appeal of Lambertton China lies in the fact that it is the result of thirty years of experience in filling the requirements of those hotels, clubs and institutions that demand the best.

SCAMMELL CHINA COMPANY



TERMS OF SALE

It is understood that these prices are tentative and not binding. It is respectfully requested that each special order be first taken up with us before submitting bids on new equipments. All invoices will be rendered at prices current at time of shipment.

All sales are F. O. B. Trenton, N. J. Packages to be charged at standard rates.

All accounts payable in par funds at Trenton.

Each bill payable thirty days from date, net; one per cent discount allowed if paid in 15 days; interest to be added at six per cent after expiration of thirty days from date of shipment.

Goods being packed by experienced packers, no allowance whatever will be made for breakage.

Cancellations refused on orders in process of manufacture.

We reserve the right to cancel any orders or part of orders which working conditions make it impracticable to execute.

All orders to be filled with reasonable promptness, but the Scammell China Company shall not be held responsible for losses resulting from delays in filling orders, by reason of fires, strikes, differences with workmen, or any other cause beyond their control.

One-half of prices charged, allowed for packages returned to us, with both heads and straw, freight prepaid, and in good condition.

SCAMMELL CHINA COMPANY

SOME PROMINENT USERS OF
SCAMMELL'S CHINA

HOTELS

Waldorf-Astoria
 The Stevens
 United Hotels Corp.
 American Hotels Corp.
 Plaza
 Savoy-Plaza
 Copley-Plaza
 Roosevelt
 Vanderbilt
 Barclay
 Standish Hall
 Commodore
 Lexington
 Berkley-Carteret
 Ritz-Carlton
 Adelphia
 Sylvania
 Pennsylvania, Phila.
 Bellevue-Stratford
 William Penn
 Pittsburgher
 Secor
 Tuller
 Barlum
 Detroit-Leland
 Wardell
 Olds
 Severin
 Miami
 Deshler
 Seelbach
 Kimball
 Bond
 Drake
 La Salle
 Carlton
 Wardman Park
 Traymore
 Brighton
 Wiltshire
 Lafayette
 Chalfonte
 President
 Seaside
 Chelsea
 Breakers
 Dennis
 Shelburne
 Lamar
 Park Lane

Paramount
 Carlisle
 Pierre
 Fleetwood
 Landlord's Inn
 Town House
 Pocono Manor Inn
 Mark Twain
 Penn Alto
 Harrisburger
 Arlington
 Easton
 George Fifth
 (Paris, France)

COUNTRY CLUBS

Oakmont
 Chartier Heights
 St. Clair
 Pittsburgh Golf
 Pittsburgh Field Club
 Piping Rock Club
 Congressional
 Detroit Golf Club
 "The Country Club"
 Lehigh
 Shawnee
 Longue Vue
 Beverly Hills
 Jefferson
 Milwaukee
 Chagrin Valley
 Lochmoor
 Chevy Chase
 Crystal Lake
 Whitmarsh
 Wing Foot
 Cherry Valley
 Old York
 Montclair
 La Gorce
 Indian Creek
 Hollywood
 Rumson
 Westwood
 Traver's Island
 Pomonock
 Siwanoy
 Lakeville Golf Club
 Philmont
 St. David's
 Atlantic City Golf Club

CLUBS

Penn Athletic
 New York Athletic
 Brooklyn Elks
 Electric Club
 New York Club
 City Club
 Hangar Club
 Chesapeake Club
 Lawyer's Club
 Whitehall Club
 Knickerbocker Club
 Duquesne Club
 Mid-Day Club
 Dallas Women's Club
 Detroit Yacht Club
 Dallas Athletic Club
 Rochester Club
 Bethlehem Club
 Pomfret Club
 Congress of Women's Club
 University Club
 Racquet Club
 Shore Acres Club
 Toledo Women's Club

HOSPITALS

Hahnemann
 Mt. Sinai
 Doctors' Hospital
 Johns-Hopkins
 Homeopathic
 Presbyterian
 Neurological Center
 St. Luke's
 St. Joseph's
 Jewish Hospital
 Mercy
 Allentown
 Easton
 Arnot Ogden
 Robert Packe Memorial
 Conemaugh Valley Memorial
 Little Company of Mary
 St. Anthony's
 Grace
 Waterbury
 Roosevelt
 Fifth Ave.
 Woman's

United
 Bronx
 Knickerbocker
 N. Y. Post Graduate
 Albany
 Vassar Bros.
 Memorial

**RESTAURANTS AND
 TEA ROOMS**

Wanamaker
 Marshall-Field
 Strawbridge & Clothier
 Gimbel's
 Frederick & Nelson
 J. L. Hudson Co.
 Bamberger's
 Famous-Barr
 Merchandise Mart
 Park & Tilford
 Sign of the Rose
 Bullock's
 Younker Bros.
 Hess Bros.
 Boston Store
 Coffee Dan's
 St. Regis
 McNally-Doyle Co.
 La Salle & Koch Co.
 Hanscom
 Acker, Merrill & Condit
 Arcadia
 Macy's
 Union News
 Kugler's
 Raklios
 Davenport's
 Bickford's
 Bowles'
 Foster's

RAILROADS

Pennsylvania
 B & O
 Lehigh Valley
 Union Pacific
 Southern Pacific
 Texas & Pacific
 Reading



ITEMS RECOMMENDED FOR HOSPITAL TRAY SERVICE

Illus. No.	ARTICLE	Trade Size	Actual Measure	USE
121	Plate	7"	8 $\frac{1}{8}$ "	Dinner
	Plate	6"	6 $\frac{3}{8}$ "	Salad
	Plate	5"	5 $\frac{5}{8}$ "	Bread and Butter
37	Butter	3"	3 $\frac{3}{4}$ "	Butter, Relish, etc.
156	Cup	Boston T	7 oz.	Tea and Coffee
	Saucer	Ovide Coffee		Tea and Bouillon Cup
16	Bouillon Cup	Fox T	8 oz.	Bouillon and Soup
	Bouillon Cup Cover	N.Y. 42,s		Bouillon Cup
87	Punch Cup	Boston	5 oz.	Fruits, Desserts and Eggs
99	Punch Cup Cover	Harriman		Punch Cup
102	Hospital Grape Fruit	5"	5 $\frac{1}{8}$ "	Vegetables and Desserts
102	Grape Fruit Cover	Hospital		Hospital Grape Fruit
100	Grape Fruit	5 $\frac{1}{2}$ "	6 $\frac{3}{8}$ "	Cereal, Large Vegetables, etc.
115	Nappy	Rice	4 $\frac{7}{8}$ "	Cover Dish
	Nappy Cover	N.Y. 30,s		Rice Nappy
160	Tea Pot	Wedgwood Small	9 oz.	Tea and Coffee
149	Sugar	Wedgwood	7 oz.	Sugar
80	Cream	Wedgwood Small	3 $\frac{1}{4}$ oz.	Cream
48	Chocolate Pot	Traymore	9 oz.	Hot Milk and Water
140	Sauce Boat	No. 3 Club	3 oz.	Gravy

TYPICAL EXAMPLES OF SPECIAL CRESTS OR MONOGRAMS

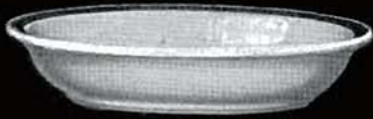


Bedford High School



The New England Steamship Company





1



3



2



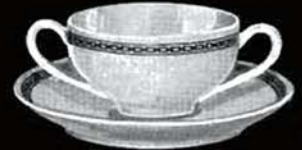
4



5



6



7



8



9



10



11



12



13



14



15



19



16



17



20



21



22



23



24

LAMBERTON CHINA



Illus. No.	ARTICLE AND SHAPE	Ivory Body	Trade Size	Actual Measure	White List per doz.	Scale 23 per doz.	Scale 25 per doz.	Scale 27 per doz.	Scale 29 per doz.	Scale 31 per doz.
Bakers										
1	Rolled Edge	*	5"	5 $\frac{5}{8}$ "	\$1.80	\$3.60	\$2.88	\$3.96	\$2.70	\$4.50
	" "	*	5 $\frac{1}{2}$ "	6 $\frac{1}{4}$ "	2.00	4.00	3.20	4.40	3.00	5.00
	" "	*	6"	6 $\frac{3}{4}$ "	2.50	5.00	4.00	5.50	3.75	6.25
	" "	*	7"	7 $\frac{5}{8}$ "	3.25	6.50	5.20	7.15	4.88	8.13
	" "	*	8"	8 $\frac{3}{4}$ "	5.00	10.00	8.00	11.00	7.50	12.50
2	Cord Edge	*	5"	5 $\frac{3}{4}$ "	2.00	4.00	3.20	4.40	3.00	5.00
	" "	*	5 $\frac{1}{2}$ "	6 $\frac{3}{8}$ "	2.25	4.50	3.60	4.95	3.38	5.63
	" "	*	6"	6 $\frac{7}{8}$ "	2.75	5.50	4.40	6.05	4.12	6.88
	" "	*	7"	7 $\frac{3}{4}$ "	3.75	7.50	6.00	8.25	5.63	9.38
	" "	*	8"	8 $\frac{7}{8}$ "	5.50	11.00	8.80	12.10	8.25	13.75
Bouillon Cups										
3	Ovide Block Handle	*	Coffee	8 oz.	3.00	5.10	4.50	5.40	4.20	6.60
4	Dora " "	*	"	8 $\frac{1}{2}$ oz.	3.00	5.10	4.50	5.40	4.20	6.60
5	Dora Loop " "	*	"	8 $\frac{1}{2}$ oz.	3.00	5.10	4.50	5.40	4.20	6.60
6	Plaza Block " "	*	"	7 oz.	3.00	5.10	4.50	5.40	4.20	6.60
7	Plaza Loop " "	*	"	7 oz.	3.00	5.10	4.50	5.40	4.20	6.60
8	Field " "	*	"	8 oz.	3.00	5.10	4.50	5.40	4.20	6.60
9	Emerson Loop " "	*	"	7 $\frac{3}{4}$ oz.	3.00	5.10	4.50	5.40	4.20	6.60
10	Penn " "	*	"	9 oz.	3.50	5.95	5.25	6.30	4.90	7.70
11	Bellevue Block " "	*	"	8 oz.	3.00	5.10	4.50	5.40	4.20	6.60
12	Ovide " "	*	Tea	6 oz.	2.75	4.68	4.13	4.95	3.85	6.05
13	Dora " "	*	"	6 $\frac{1}{2}$ oz.	2.75	4.68	4.13	4.95	3.85	6.05
14	Dora Loop " "	*	"	6 $\frac{1}{2}$ oz.	2.75	4.68	4.13	4.95	3.85	6.05
15	Field " "	*	"	5 $\frac{3}{4}$ oz.	2.75	4.68	4.13	4.95	3.85	6.05
16	Fox Block " "	*	"	8 oz.	2.75	4.68	4.13	4.95	3.85	6.05
17	Boston " "	*	"	7 oz.	2.75	4.68	4.13	4.95	3.85	6.05
	Bellevue " "	*	"	7 oz.	2.75	4.68	4.13	4.95	3.85	6.05
Bouillon Cups—Unhandled										
19	Ovide	*	Coffee	8 oz.	2.00	3.40	3.00	3.60	2.80	4.40
20	Dora	*	"	8 $\frac{1}{2}$ oz.	2.00	3.40	3.00	3.60	2.80	4.40
21	Bellevue	*	"	8 oz.	2.00	3.40	3.00	3.60	2.80	4.40
22	Plaza	*	"	7 oz.	2.00	3.40	3.00	3.60	2.80	4.40
23	Boston	*	Tea	7 oz.	2.00	3.40	3.00	3.60	2.80	4.40
24	Fox	*	"	8 oz.	2.00	3.40	3.00	3.60	2.80	4.40

* Indicates items available in Ivory Body.



25



26



29



27



28



30



31



33



34



36



37



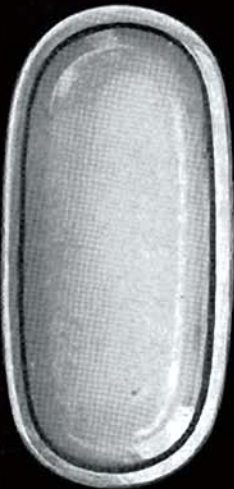
40



38



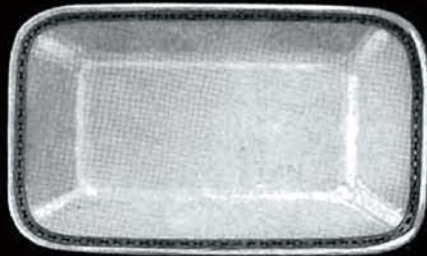
39



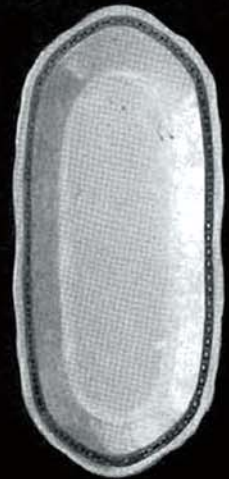
43



41



44



42



47



46



45



48

LAMBERTON CHINA



Illus. No.	ARTICLE AND SHAPE	Ivory Body	Trade Size	Actual Measure	White List per doz.	Scale 23 per doz.	Scale 25 per doz.	Scale 27 per doz.	Scale 29 per doz.	Scale 31 per doz.
Bouillon Linings										
25	Ovide		Coffee	8 oz.	\$2.00	\$3.40	\$3.00	\$3.60	\$2.80	\$4.40
26	Bellevue-Stratford		Tea	6 oz.	2.25	3.75	3.25	4.00	2.95	4.50
27	Vanderbilt	*	"	5 oz.	2.25	3.75	3.25	4.00	2.95	4.50
28	Wallace		"	5½ oz.	2.25	3.75	3.25	4.00	2.95	4.50
Bouillon Saucers										
See respective coffee and tea saucers.										
Bouillon Covers										
29	Dora		Coffee	4¼"	2.00	4.00	3.20	4.40	3.00	5.00
Bowls										
30	Pompadour			5" 5¾"	3.33	6.66	5.33	7.33	5.00	8.33
31	Rolled Edge, Footed	*		5" 5½"	2.50	5.00	4.00	5.50	3.75	6.25
	" " "	*		5½" 6¼"	3.00	6.00	4.80	6.60	4.50	7.50
33	Field, Footed, (thin)			5" 5¼"	4.17	8.34	6.67	9.17	6.25	10.43
34	Rolled Edge, Low Foot		30,s	5½"	2.50	5.00	4.00	5.50	3.75	6.25
Butters										
36	Individual Del. R. E.	*	3"	3¾"	.60	1.20	.96	1.32	.90	1.50
37	" 3" R. E.	*	3"	3¼"	.60	1.20	.96	1.32	.90	1.50
38	" Ill. Central	*		4"	1.00	2.00	1.60	2.20	1.50	2.50
39	" Raleigh, R. E.			3½"	1.00	2.00	1.60	2.20	1.50	2.50
40	" James, P. E., Handled	*		4⅞x4⅝"	1.50	3.00	2.40	3.30	2.25	3.75
Cake Covers										
41	Round, Hole	*		5⅞x2½"	3.50	7.00	5.60	7.70	5.25	8.75
Celery Trays										
42	Club		No. 1	12¼x5¼"	7.50	15.00	12.00	16.50	11.25	18.75
	"		No. 2	9⅞x5¼"	6.00	12.00	9.60	13.20	9.00	15.00
43	Penn	*	No. 1	11¾x5¾"	7.50	15.00	12.00	16.50	11.25	18.75
	"	*	No. 2	10¾x4½"	6.00	12.00	9.60	13.20	9.00	15.00
44	Bellevue-Stratford	*	No. 3	7½x3⅝"	5.00	10.00	8.00	11.00	7.50	12.50
				8⅝x5¼"	7.50	15.00	12.00	16.50	11.25	18.75
Chocolate Mugs										
45	Huyler Handled	*		7½ oz.	2.50	5.00	4.00	5.50	3.75	6.25
	" Unhandled	*		7½ oz.	2.25	4.50	3.60	4.95	3.38	5.63
46	Weber Handled			6½ oz.	2.75	5.50	4.40	6.05	4.13	6.88
Chocolate Pots										
47	Wanamaker 1 por.	*		8 oz.	8.50	17.00	13.60	18.70	12.75	21.25
48	Traymore 1 por.	*		9 oz.	10.00	20.00	16.00	22.00	15.00	25.00
	" 2 por.			13½ oz.	13.50	27.00	21.60	29.70	20.25	33.75

* Indicates items available in Ivory Body.



Illus. No.	ARTICLE AND SHAPE	Ivory Body	Trade Size	Actual Measure	White List per doz.	Scale 23 per doz.	Scale 25 per doz.	Scale 27 per doz.	Scale 29 per doz.	Scale 31 per doz.
Coffee Cups										
49	Ovide Block Handle	*	Coffee	8 oz.	\$2.25	\$3.75	\$3.25	\$4.00	\$2.95	\$4.50
50	Dora " "	*	"	8½ oz.	2.25	3.75	3.25	4.00	2.95	4.50
51	Dora Loop "	*	"	8½ oz.	2.25	3.75	3.25	4.00	2.95	4.50
52	Dora Breakfast Loop Handle	"	"	10½ oz.	2.50	4.25	3.40	4.55	3.12	5.12
53	†Stevens Block Handle	"	"	7¾ oz.	2.25	3.75	3.25	4.00	2.95	4.50
54	†Bellevue " "	"	"	8 oz.	2.25	3.75	3.25	4.00	2.95	4.50
55	Bellevue-Stratford Block Handle	*	"	8 oz.	2.25	3.75	3.25	4.00	2.95	4.50
56	" " Loop "	*	"	8 oz.	2.25	3.75	3.25	4.00	2.95	4.50
57	Plaza Block Handle	*	"	7 oz.	2.25	3.75	3.25	4.00	2.95	4.50
58	" Loop "	*	"	7 oz.	2.25	3.75	3.25	4.00	2.95	4.50
59	Penn " "	"	"	9 oz.	2.75	4.75	3.80	5.10	3.50	5.75
60	Emerson " "	"	"	7¾ oz.	2.25	3.75	3.25	4.00	2.95	4.50
61	†LaSalle Block "	"	"	7½ oz.	2.25	3.75	3.25	4.00	2.95	4.50
62	‡Touraine Loop "	"	"	8¾ oz.	2.50	4.25	3.40	4.55	3.12	5.12
63	‡Lazarre Block "	"	"	7 oz.	2.25	3.75	3.25	4.00	2.95	4.50
64	§Hollenden " "	"	"	7¾ oz.	2.25	3.75	3.25	4.00	2.95	4.50
65	§Saxon Loop "	"	"	7¾ oz.	2.25	3.75	3.25	4.00	2.95	4.50
Coffee Saucers										
	Ovide Plain Edge	*	Coffee	6¼"	1.25	2.50	2.00	2.75	1.88	3.12
	" Rolled "	*	"	6¼"	1.25	2.50	2.00	2.75	1.88	3.12
	Dora	*	"	5¼"	1.25	2.50	2.00	2.75	1.88	3.12
	Bellevue-Stratford	*	"	6"	1.25	2.50	2.00	2.75	1.88	3.12
	Plaza	*	"	6½"	1.25	2.50	2.00	2.75	1.88	3.12
	Penn	"	"	6"	1.25	2.50	2.00	2.75	1.88	3.12
	Emerson	"	"	5⅞"	1.25	2.50	2.00	2.75	1.88	3.12
After-Dinner Coffee Cups										
66	Ovide Block Handle	*	A. D.	3¼ oz.	1.60	3.20	2.56	3.52	2.40	4.00
67	Dora " "	*	"	"	1.60	3.20	2.56	3.52	2.40	4.00
68	" Loop "	*	"	"	1.60	3.20	2.56	3.52	2.40	4.00
69	Plaza Block "	*	"	"	1.60	3.20	2.56	3.52	2.40	4.00
70	" Loop "	*	"	"	1.60	3.20	2.56	3.52	2.40	4.00
71	Penn " "	"	"	2¾ oz.	1.75	3.50	2.80	3.85	2.63	4.38
	Emerson Loop "	"	"	3 oz.	1.60	3.20	2.56	3.52	2.40	4.00
73	Touraine " "	"	"	3 oz.	1.60	3.20	2.56	3.52	2.40	4.00
After-Dinner Coffee Saucers										
	Ovide	*		4⅝"	1.00	2.00	1.60	2.20	1.50	2.50
	Dora	*		4⅝"	1.00	2.00	1.60	2.20	1.50	2.50
	Plaza	*		4¾"	1.00	2.00	1.60	2.20	1.50	2.50
	Penn	"		4¾"	1.25	2.50	2.00	2.75	1.88	3.13
	Emerson	"		4½"	1.25	2.50	2.00	2.75	1.88	3.13
	Touraine	"		4½"	1.25	2.50	2.00	2.75	1.88	3.13

† Use Ovide Coffee Saucer.

‡ Use Plaza Coffee Saucer.

§ Use Dora Coffee Saucer.

* Indicates items available in Ivory Body.



74



75



81



80



82



76



77



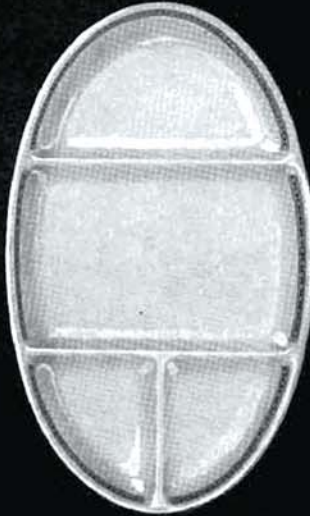
78



79



84



86



85



87



99



88



89



90



91



92



93



94



97



98



96



95



Illus. No.	ARTICLE AND SHAPE	Ivory Body	Trade Size	Actual Measure	White List per doz.	Scale 23 per doz.	Scale 25 per doz.	Scale 27 per doz.	Scale 29 per doz.	Scale 31 per doz.
Comports										
74	High Foot Rolled Edge		5"	5 ⁷ / ₈ "	\$5.00	\$10.00	\$8.00	\$11.00	\$7.50	\$12.50
	" " " "		6"	6 ⁵ / ₈ "	6.00	12.00	9.60	13.20	9.00	15.00
	" " " "	*	6 ¹ / ₂ "	7 ¹ / ₈ "	8.50	17.00	13.60	18.70	12.75	21.25
	" " " "		7"	7 ³ / ₄ "	10.00	20.00	16.00	22.00	15.00	25.00
	" " " "		8"	9"	12.00	24.00	19.20	26.40	18.00	30.00
Covered Dishes										
75	Chateau, Oval		5"	7x5"	15.00	20.00	18.00	24.00	18.75	30.00
	" " " "		6"	8 ³ / ₄ x6"	18.00	26.00	22.00	28.00	21.00	36.00
	" " " "		7"	9 ¹ / ₂ x6 ¹ / ₂ "	20.00	30.00	26.00	32.00	25.00	40.00
	" " " "		8"	10 ³ / ₈ x8"	25.00	37.50	32.50	40.00	31.25	50.00
Creams										
76	Bismarck Unhandled	*		1 ³ / ₄ oz.	1.50	3.00	2.40	3.30	2.25	3.75
77	Huyler " "		56,s	1 ³ / ₄ oz.	1.50	3.00	2.40	3.30	2.25	3.75
	" " " "		60,s	1 ¹ / ₄ oz.	1.25	2.50	2.00	2.75	1.88	3.13
78	Palace Handled			4 oz.	3.00	6.00	4.80	6.60	4.50	7.50
79	Wedgwood, Large Handled	*	No. 1	5 oz.	4.00	8.00	6.40	8.80	6.00	10.00
80	" Small " "	*	No. 2	3 ¹ / ₄ oz.	3.00	6.00	4.80	6.60	4.50	7.50
Cream Soups										
81	Cup, Plain	*		10 oz.	6.00	12.00	9.60	13.20	9.00	15.00
81	Stand, Plain	*		7 ¹ / ₄ x6 ³ / ₄ "	3.00	6.00	4.80	6.60	4.50	7.50
Custards										
82	Rolled Edge, Footed		R. E.	6 oz.	2.00	4.00	3.20	4.40	3.00	5.00
91	Auditorium, R. E. Handled		Audit	6 ¹ / ₂ oz.	2.25	4.50	3.60	4.95	3.38	5.63
	" " Unhandled	*	Audit	6 ¹ / ₂ oz.	2.00	4.00	3.20	4.40	3.00	5.00
Dishes										
84	Rolled Edge	*	6"	7"	2.25	4.50	3.60	4.95	3.38	5.63
	" " " "	*	7"	8"	3.00	6.00	4.80	6.60	4.50	7.50
	" " " "	*	8"	9 ¹ / ₈ "	3.50	7.00	5.60	7.70	5.25	8.75
	" " " "	*	9"	10 ¹ / ₄ "	4.00	8.00	6.40	8.80	6.00	10.00
	" " " "	*	10"	11 ³ / ₈ "	5.00	10.00	8.00	11.00	7.50	12.50
	" " " "	*	11"	12 ³ / ₈ "	6.50	13.00	10.40	14.30	9.75	16.25
	" " " "	*	12"	13 ⁵ / ₈ "	9.00	18.00	14.40	19.80	13.50	22.50
	" " " "	*	14"	15 ³ / ₄ "	12.00	24.00	19.20	26.40	18.00	30.00
	" " " "	*	16"	17 ³ / ₄ "	20.00	40.00	32.00	44.00	30.00	50.00
	85	Cord Edge	*	6"	7 ¹ / ₈ "	2.50	5.00	4.00	5.50	3.75
" " " "		*	7"	8 ¹ / ₈ "	3.25	6.50	5.20	7.15	4.88	8.13
" " " "		*	8"	9 ¹ / ₄ "	3.75	7.50	6.00	8.25	5.63	9.38
" " " "		*	9"	10 ³ / ₈ "	4.25	8.50	6.80	9.35	6.38	10.63
" " " "		*	10"	11 ¹ / ₂ "	5.50	11.00	8.80	12.10	8.25	13.75
" " " "		*	11"	12 ¹ / ₂ "	7.50	15.00	12.00	16.50	11.25	18.75
" " " "		*	12"	13 ³ / ₄ "	10.00	20.00	16.00	22.00	15.00	25.00
" " " "		*	14"	15 ¹ / ₈ "	13.50	27.00	21.60	29.70	20.25	33.75
" " " "		*	16"	17 ⁷ / ₈ "	22.00	44.00	35.20	48.40	33.00	55.00
86		Compartment, Oval (4 compts.)		Stevens	11 ⁷ / ₈ x7"	9.00	18.00	14.40	19.80	13.50
Egg Cups										
87	Boston	*		5 oz.	2.25	4.50	3.60	4.95	3.38	5.63
88	Double	*		4 oz.	2.00	4.00	3.20	4.40	3.00	5.00
89	Belvidere	*		5 ¹ / ₂ oz.	2.50	5.00	4.00	5.50	3.75	6.25
90	Single			1 ¹ / ₂ oz.	1.50	3.00	2.40	3.30	2.25	3.75
91	Auditorium Handled			6 ¹ / ₂ oz.	2.25	4.50	3.60	4.95	3.38	5.63
	" Unhandled	*		6 ¹ / ₂ oz.	2.00	4.00	3.20	4.40	3.00	5.00
92	Biltmore, Large			6 oz.	2.75	5.50	4.40	6.05	4.13	6.88
93	" Small			1 ¹ / ₂ oz.	2.50	5.00	4.00	5.50	3.75	6.25
94	Huyler			4 oz.	2.25	4.50	3.60	4.95	3.38	5.63
95	Shaw Handled			5 ¹ / ₂ oz.	2.25	4.50	3.60	4.95	3.38	5.63
	" Unhandled			5 ¹ / ₂ oz.	2.00	4.00	3.20	4.40	3.00	5.00
Egg Cup Cover										
99	Boston (For Boston egg cup)			4 ⁵ / ₁₆ "	2.00	4.00	3.20	4.40	3.00	5.00
Fruits										
96	Rolled Edge Tub	*	4 ¹ / ₂ "	5 ¹ / ₈ "	1.25	2.50	2.00	2.75	1.88	3.13
	" " " "	*	5 ¹ / ₂ "	6 ¹ / ₈ "	1.50	3.00	2.40	3.30	2.25	3.75
97	Cord " "	*	4 ¹ / ₂ "	5 ¹ / ₁₀ "	1.50	3.00	2.40	3.30	2.25	3.75
	" " " "	*	5 ¹ / ₂ "	6 ³ / ₁₆ "	1.75	3.50	2.80	3.85	2.63	4.38
98	Alexander, R. E., Deep		3 ¹ / ₂ "	4 ³ / ₈ "	1.00	2.00	1.60	2.20	1.50	2.50

* Indicates items available in Ivory Body.



100



101



102



103



104



112



105



106



107



108



117



119



118



109



110



113



114



111



120



115

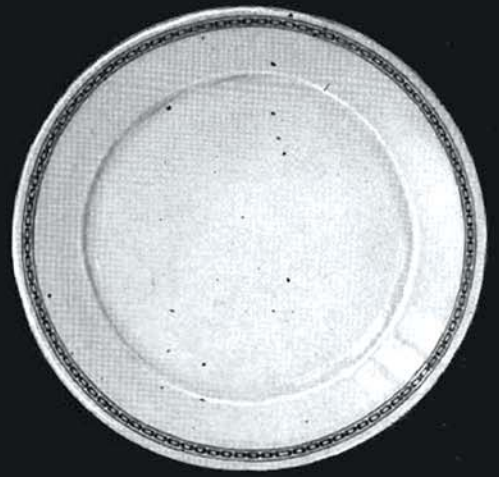


Illus. No.	ARTICLE AND SHAPE	Ivory Body	Trade Size	Actual Measure	White List per doz.	Scale 23 per doz.	Scale 25 per doz.	Scale 27 per doz.	Scale 29 per doz.	Scale 31 per doz.
Grape Fruits										
100	Rolled Edge	*	5 1/2"	6 3/8"	\$2.25	\$4.50	\$3.60	\$4.95	\$3.38	\$5.63
101	Quarter Thick	*	5 1/2"	6 3/8"	2.25	4.50	3.60	4.95	3.38	5.63
102	Hospital, Bottom	*	5"	5 1/8"	1.75	3.50	2.80	3.85	2.63	4.38
102	" Cover	*			1.40	2.80	2.24	3.08	2.10	3.50
Horse Radish Jars										
103	Round, Covered and Handled			4 1/2 oz.	3.00	6.00	4.80	6.60	4.50	7.50
Ice Creams										
	Rolled Edge	*	3 1/2"	3 7/8"	1.00	2.00	1.60	2.20	1.50	2.50
	" "	*	4"	4 1/2"	1.25	2.50	2.00	2.75	1.88	3.13
104	" "	*	4 1/2"	5 1/8"	1.40	2.80	2.24	3.08	2.10	3.50
	" "	*	5"	5 5/8"	1.50	3.00	2.40	3.30	2.25	3.75
	" "	*	5 1/2"	6"	1.75	3.50	2.80	3.85	2.63	4.38
105	Plain Handled	*	4 1/2"	5 x 5 5/8"	2.00	4.00	3.20	4.40	3.00	5.00
106	Quarter Thick	*	4 1/2"	5 1/8"	1.40	2.80	2.24	3.08	2.10	3.50
	" " Handled	*	5"	5 5/8"	1.50	3.00	2.40	3.30	2.25	3.75
107	Biltmore	*	4 1/2"	5 x 5 3/4"	2.00	4.00	3.20	4.40	3.00	5.00
			6"	6 1/2"	2.75	5.50	4.40	6.05	4.13	6.88
Ice Tubs										
108	Round		9"	9 1/4 x 5 1/2"	20.00	30.00	28.00	33.00	26.00	37.50
Jugs										
	Chateau Handled	*	30,s	19 oz.	6.50	13.00	10.40	14.30	9.75	16.25
	" "	*	36,s	15 oz.	4.00	8.00	6.40	8.80	6.00	10.00
	" "	*	42,s	8 oz.	2.50	5.00	4.00	5.50	3.75	6.25
109	" "	*	46,s	6 oz.	2.25	4.50	3.60	4.95	3.38	5.63
	" "	*	48,s	3 1/2 oz.	2.00	4.00	3.20	4.40	3.00	5.00
	" "	*	56,s	2 oz.	1.50	3.00	2.40	3.30	2.25	3.75
110	" Unhandled	*	48,s	3 1/2 oz.	2.00	4.00	3.20	4.40	3.00	5.00
	" "	*	56,s	2 oz.	1.50	3.00	2.40	3.30	2.25	3.75
	Ovide Handled		6,s	104 oz.	25.00	40.00	32.00	42.00	30.00	50.00
	" "		12,s	78 oz.	20.00	30.00	27.00	32.00	24.00	40.00
	" "		24,s	52 oz.	8.00	16.00	12.80	17.60	12.00	20.00
	" "		30,s	37 oz.	6.50	13.00	10.40	14.30	9.75	16.25
	" "		36,s	14 oz.	4.50	9.00	7.20	9.90	6.75	11.25
	" "		38,s	9 1/4 oz.	4.00	8.00	6.40	8.80	6.00	10.00
111	" "		42,s	6 1/4 oz.	2.75	5.50	4.40	6.05	4.13	6.88
	" "		48,s	4 3/4 oz.	2.00	4.00	3.20	4.40	3.00	5.00
	" "		56,s	2 1/4 oz.	1.50	3.00	2.40	3.30	2.25	3.75
Hot Water										
79	Wedgwood Handled	*	No. 1	5 oz.	4.00	8.00	6.40	8.80	6.00	10.00
Muffin Stands										
112	Penn, Cover			6 3/16"	9.00	15.00	12.00	15.00	12.00	15.00
112	" Bottom			8 3/4"	4.00	8.00	6.40	8.80	6.00	10.00
Mustards										
113	N. Y. Covered	*		1 1/2 oz.	2.25	4.50	3.60	4.95	3.38	5.63
114	Round "	*		4 1/2 oz.	3.00	6.00	4.80	6.60	4.50	7.50
Nappies										
115	Rice, Rolled Edge Uncovered	*	4 1/2"	4 7/8"	2.25	4.50	3.60	4.95	3.38	5.63
	Covers (For above)	*			2.00	4.00	3.20	4.40	3.00	5.00
Oatmeals										
117	Rolled Edge	*	5"	5 1/2"	2.25	4.50	3.60	4.95	3.38	5.63
	" "	*	5 1/2"	6 1/2"	2.50	5.00	4.00	5.50	3.75	6.25
118	Pick, Rolled Edge	*	6"	6"	2.50	5.00	4.00	5.50	3.75	6.25
Olives										
119	Regent Handled	*		5 1/4 x 3 7/8"	1.75	3.50	2.80	3.85	2.63	4.38
120	Plain "	*	4 1/2"	5 5/8 x 5"	2.00	4.00	3.20	4.40	3.00	5.00

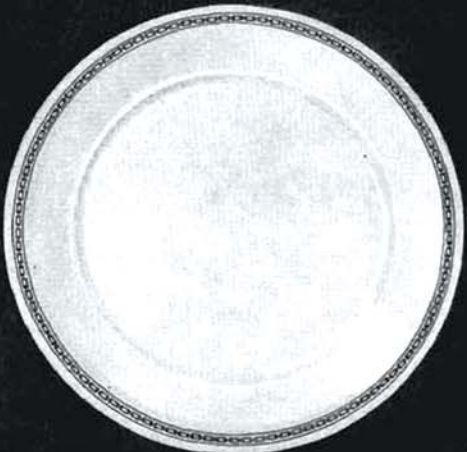
* Indicates items available in Ivory Body.



122



121



125



127



126



128

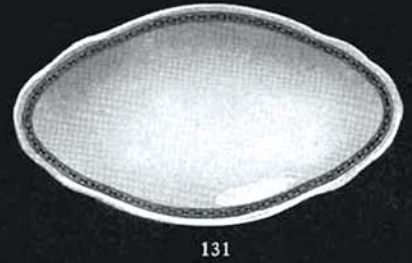
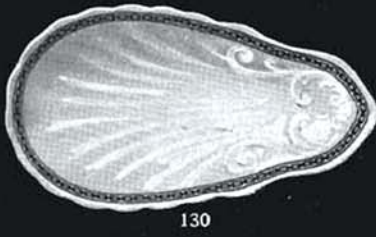


129



Illus. No.	ARTICLE AND SHAPE	Ivory Body	Trade Size	Actual Measure	White List per doz.	Scale 23 per doz.	Scale 25 per doz.	Scale 27 per doz.	Scale 29 per doz.	Scale 31 per doz.
Plates										
121	Rolled Edge	*	3 1/2"	4 3/4"	\$1.00	\$2.00	\$1.60	\$2.20	\$1.50	\$2.50
	" "	*	4"	5 3/8"	1.25	2.50	2.00	2.75	1.88	3.13
	" "	*	5"	5 5/8"	1.30	2.60	2.08	2.86	1.95	3.25
	" "	*	6"	6 3/8"	1.45	2.90	2.32	3.09	2.18	3.63
	" "	*	6 1/4"	7"	1.55	3.10	2.48	3.41	2.33	3.88
	" "	*	6 1/2"	7 5/8"	1.75	3.50	2.80	3.85	2.63	4.38
	" "	*	7"	8 1/8"	2.00	4.00	3.20	4.40	3.00	5.00
	" "	*	7 1/2"	8 7/8"	2.40	4.80	3.84	5.28	3.60	6.00
	" "	*	8"	9 3/8"	3.00	5.25	4.25	5.75	4.00	6.60
	" "	*	8 1/2"	9 3/4"	3.50	6.00	4.80	6.60	4.50	7.50
122	Cord Edge	*	5"	5 7/8"	1.50	3.00	2.40	3.30	2.25	3.75
	" "	*	6"	6 5/8"	1.75	3.50	2.80	3.85	2.63	4.38
	" "	*	6 1/4"	7 1/4"	1.90	3.80	3.04	4.18	2.85	4.75
	" "	*	6 1/2"	7 7/8"	2.00	4.00	3.20	4.40	3.00	5.00
	" "	*	7"	8 1/4"	2.25	4.50	3.60	4.95	3.38	5.63
	" "	*	7 1/2"	8 7/8"	2.50	5.00	4.00	5.50	3.75	6.25
	" "	*	8"	9 1/2"	3.25	5.50	4.50	6.00	4.25	6.75
	" "	*	8 1/2"	10 1/8"	4.00	7.00	5.50	7.15	5.00	8.25
	Biltmore	*	4 1/2"	6 3/8"	2.25	4.50	3.60	4.95	3.38	5.63
	" "	*	6 1/2"	7 7/8"	3.00	5.00	4.00	5.50	4.00	6.00
125	" "	*	8"	9 1/4"	3.50	6.00	4.75	6.50	4.75	7.00
	" "	*	8 1/2"	10 1/4"	4.50	7.50	6.00	8.00	6.00	8.50
	Quarter Thick	*	5 1/2"	6 3/4"	1.75	3.50	2.80	3.85	2.63	4.38
	" "	*	6 1/2"	7 7/16"	2.00	4.00	3.20	4.40	3.00	5.00
	" "	*	7 1/2"	8 1/2"	2.50	5.00	4.00	5.50	3.75	6.25
	" "	*	8"	9 1/4"	3.25	5.50	4.50	6.00	4.25	6.75
	" "	*	8 1/2"	10"	4.00	7.00	5.50	7.15	5.00	8.25
	Service, Flat	*	10"	9 7/8"	6.00	12.00	9.60	13.20	9.00	15.00
	" "	*	12"	11"	9.00	18.00	14.40	19.80	13.50	22.50
	Soup Plates									
126	Rolled Edge	*	5 3/4"	6 7/8"	1.60	3.20	2.56	3.52	2.40	4.00
	" "	*	6"	7 3/8"	1.70	3.40	2.72	3.74	2.55	4.25
	" "	*	6 1/2"	7 7/8"	1.85	3.70	2.96	4.07	2.78	4.63
	" "	*	7"	8 1/2"	2.15	4.30	3.44	4.73	3.23	5.38
	" "	*	7 1/2"	8 7/8"	2.50	5.00	4.00	5.50	3.75	6.25
127	Cord Edge	*	5 3/4"	7 1/8"	1.90	3.80	3.04	4.18	2.85	4.75
	" "	*	6 1/2"	8"	2.10	4.20	3.36	4.62	3.15	5.25
	" "	*	7"	8 5/8"	2.40	4.80	3.84	5.28	3.60	6.00
" "	*	7 1/2"	9"	2.60	5.20	4.16	5.72	3.90	6.50	
Coupe Soup Plates										
128	Rolled Edge	*	6"	6 7/8"	2.00	4.00	3.20	4.40	3.00	5.00
	" "	*	6 1/2"	7 1/2"	2.40	4.80	3.84	5.28	3.60	6.00
129	" "	*	7 1/2"	8 3/4"	3.00	6.00	4.80	6.60	4.50	7.50
	Quarter Thick	*	6 1/2"	7 3/8"	2.50	5.00	4.00	5.50	3.75	6.25

* Indicates items available in Ivory Body.





Illus. No.	ARTICLE AND SHAPE	Ivory Body	Trade Size	Actual Measure	White List per doz.	Scale 23 per doz.	Scale 25 per doz.	Scale 27 per doz.	Scale 29 per doz.	Scale 31 per doz.
Pickles										
130	Shell	*	No. 1	9½"	\$5.00	\$10.00	\$8.00	\$11.00	\$7.50	\$12.50
131	"	*	No. 2	8"	4.00	8.00	6.40	8.80	6.00	10.00
	St. Charles	*	No. 2	8¾x4⅞"	4.00	8.00	6.40	8.80	6.00	10.00
	"	*	No. 3	7¾x4¼"	3.50	7.00	5.60	7.70	5.25	8.75
Punch Cups										
87	Boston	*		5 oz.	2.25	4.50	3.60	4.95	3.38	5.63
99	Cover	*		4⅝"	2.00	4.00	3.20	4.40	3.00	5.00
Ramikins										
134	Straight, Fluted	*		3"	1.50	3.00	2.40	3.30	2.25	3.75
135	Wallace, Plain	*		5⅝"	2.50	5.00	4.00	5.50	3.75	6.25
136	Crimped	*		5"	2.75	5.50	4.40	6.05	4.13	6.88
137	Covered (Covers included)	*	Calif.	3⅞"	2.25	4.50	3.60	4.95	3.38	5.63
	Extra Covers	*	"		1.00	2.00	1.60	2.20	1.50	2.50
Salads										
	Rolled Edge, Footed	*	5"	6"	3.00	6.00	4.80	6.60	4.50	7.50
138	"	*	6"	6½"	3.50	7.00	5.60	7.70	5.25	8.75
	"	*	6½"	7"	4.00	8.00	6.40	8.80	6.00	10.00
	"	*	7"	7½"	5.50	11.00	8.80	12.10	8.25	13.75
	"	*	8"	8½"	7.00	14.00	11.20	15.40	10.50	17.50
	"	*	9"	9½"	10.00	20.00	16.00	22.00	15.00	25.00
	"	*	11"	11¼"	16.00	32.00	25.60	35.20	24.00	40.00
139	Manhattan	*	7"	5⅝x5⅝"	4.75	9.50	7.60	10.45	7.13	11.88
	"	*	8"	6⅝x6⅝"	5.50	11.00	8.80	12.10	8.25	13.75
	"	*	9"	7⅝x7⅝"	7.00	14.00	11.20	15.40	10.50	17.50
Sauce Boats										
140	Club	*	No. 1	9 oz.	6.00	12.00	9.60	13.20	9.00	15.00
	"	*	No. 2	4½ oz.	4.17	8.34	6.67	9.17	6.25	10.43
	"	*	No. 3	2 oz.	3.50	7.00	5.60	7.70	5.25	8.75
141	Fast Stand	*		16 oz.	10.80	21.60	17.28	23.76	16.20	27.00
Sugars										
142	Boston C. of C., Covered	*		20 oz.	6.00	12.00	9.60	13.20	9.00	15.00
143	Club, Covered	*	30,s	15½ oz.	6.25	12.50	10.00	13.75	9.38	15.63
	"	*	36,s	9 oz.	5.00	10.00	8.00	11.00	7.50	12.50
144	Palace Handled and Covered	*		7 oz.	5.50	11.00	8.80	12.10	8.25	13.75
	" Unhandled and Covered	*		7 oz.	5.00	10.00	8.00	11.00	7.50	12.50
	" Handled and Open	*		7 oz.	3.67	7.34	5.87	8.08	5.50	9.17
	" Unhandled and Open	*		7 oz.	3.33	6.66	5.33	7.33	5.00	8.33
146	Field, Open	*		6 oz.	3.00	6.00	4.80	6.60	4.50	7.50
147	Plaza	*		4 oz.	3.00	6.00	4.80	6.60	4.50	7.50
148	Ritz	*		4 oz.	1.67	3.34	2.67	3.67	2.50	4.17
149	Wedgwood, Unhandled and Covered	*		7 oz.	5.00	10.00	8.00	11.00	7.50	12.50
Tea Cups										
150	Ovide Block Handle	*	Tea	6 oz.	2.00	3.40	3.00	3.60	2.80	4.40
151	Dora	*	"	6½ oz.	2.00	3.40	3.00	3.60	2.80	4.40
152	" Loop	*	"	6½ oz.	2.00	3.40	3.00	3.60	2.80	4.40
153	Field	*	"	5¾ oz.	2.40	4.08	3.60	4.32	3.36	5.28
154	Biltmore Loop	*	"	6 oz.	2.50	4.25	3.75	4.50	3.50	5.50
155	James Block	*	"	7 oz.	2.00	3.40	3.00	3.60	2.80	4.40
156	†Boston	*	"	7 oz.	2.00	3.40	3.00	3.60	2.80	4.40
157	†Fox	*	"	8 oz.	2.00	3.40	3.00	3.60	2.80	4.40
	†Bellevue Loop	*	"	7 oz.	2.00	3.40	3.00	3.60	2.80	4.40
	(†Use Ovide Coffee Saucer.)									
Tea Saucers										
	Ovide	*	Tea	5¾"	1.10	2.20	1.76	2.42	1.65	2.75
	Dora	*	"	5⅞"	1.10	2.20	1.76	2.42	1.65	2.75
	Field	*	"	5½"	1.25	2.50	2.00	2.75	1.88	3.13
	James	*	"	6⅞"	1.10	2.20	1.76	2.42	1.65	2.75
	Biltmore	*	"	5¾"	1.25	2.50	2.00	2.75	1.88	3.13

* Indicates items available in Ivory Body.





Illus. No.	ARTICLE AND SHAPE	Ivory Body	Trade Size	Actual Measure	White List per doz.	Scale 23 per doz.	Scale 25 per doz.	Scale 27 per doz.	Scale 29 per doz.	Scale 31 per doz.
Tea Pots										
159	Palace 1 Por.			13 oz.	\$7.50	\$15.00	\$12.00	\$16.50	\$11.25	\$18.75
	" 2 "			20 oz.	12.00	24.00	19.20	26.40	18.00	30.00
	" 4 "			27 oz.	15.00	30.00	24.00	33.00	22.50	37.50
160	Wedgwood 1 "	*		9 oz.	7.50	15.00	12.00	16.50	11.25	18.75
	" 2 "	*		18 oz.	12.00	24.00	19.20	26.40	18.00	30.00
Tureen										
	Chateau, Soup		10"	3 qts.	36.00	60.00	54.00	66.00	54.00	75.00
SPECIALTIES										
Ash Tray										
161	Vanderbilt			5 ¹ / ₄ x3 ³ / ₈ "	3.00	5.25	4.25	5.75	4.00	6.60
162	Ritz			5 ³ / ₄ "	3.25	6.50	5.20	7.15	4.88	8.13
163	Howe			4 ¹ / ₄ "	3.00	6.00	4.80	6.60	4.50	7.50
164	Savoy			4 ⁷ / ₈ "	3.25	5.50	4.50	6.00	4.25	6.75
Brush Vases										
165	M. A.			3 ⁵ / ₁₆ " High	3.50	7.00	5.60	7.70	5.25	8.75
166	Plaza			4 ¹ / ₂ " High	3.50	7.00	5.60	7.70	5.25	8.75
Candle Sticks										
167	Regular, Handled and Unhandled			2 ¹ / ₄ " High	4.00	8.00	6.40	8.80	6.00	10.00
168	Savoy (Narrow base)			2 ¹ / ₂ " High	4.00	8.00	6.40	8.80	6.00	10.00
169	Traymore	*		1 ³ / ₄ " High	4.00	8.00	6.40	8.80	6.00	10.00
Comb and Brush Tray										
170	Blackstone	*		8 ¹ / ₈ x11 ³ / ₈ "	6.00	12.00	9.60	13.20	9.00	15.00
171	Oblong	*		6 ³ / ₄ x10 ³ / ₄ "	6.00	12.00	9.60	13.20	9.00	15.00
Cuspidor										
172	Hero			4 ⁷ / ₈ " High	7.50	11.25	9.00	12.30	8.40	14.00
173	Imperial			5 ¹ / ₂ " High	10.00	15.00	12.00	16.50	11.25	18.75
Match Stand										
174	Book	*		5 ³ / ₄ " Dia.	4.50	9.00	7.20	9.90	6.75	11.25
175	La Salle			3 ⁹ / ₁₆ " High	5.25	10.50	8.40	11.55	7.88	13.13
176	Palace			3 ¹ / ₈ " High	5.50	11.00	8.80	12.10	8.25	13.75
177	Park Lane			3 ³ / ₈ x3 ³ / ₄ "	4.50	9.00	7.20	9.90	6.75	11.25
178	Plaza			3 ¹ / ₂ " High	5.50	11.00	8.80	12.10	8.25	13.75
179	Regular Hooded			3 ⁷ / ₁₆ " High	5.00	10.00	8.00	11.00	7.50	12.50
180	Savoy-Plaza			3 ³ / ₈ x5 ⁵ / ₈ "	4.50	9.00	7.20	9.90	6.75	11.25
181	Traymore	*		3 ⁵ / ₈ " High	6.25	12.50	10.00	13.75	9.38	15.63
Pin Trays										
182	Blackstone	*		5 ³ / ₈ x3 ¹ / ₂ "	3.00	6.00	4.80	6.60	4.50	7.50
183	Plaza			5 ¹ / ₄ x2 ¹ / ₄ "	3.00	6.00	4.80	6.60	4.50	7.50
Soap										
184	Blackstone			5 ³ / ₈ x3 ¹ / ₂ "	4.00	8.00	6.40	8.80	6.00	10.00
Room Jug										
185	Willard			46 oz.	8.00	16.00	12.80	17.60	12.00	20.00
Tea Dansant										
186	Tray, Round			7 ³ / ₄ "	5.00	10.00	8.00	11.00	7.50	12.50
186	Cup, Loop Handle			5 ¹ / ₂ oz.	2.40	4.08	3.60	4.32	3.36	5.28

* Indicates items available in Ivory Body.

SCAMMELL'S LAMBERTON CHINA PLATINUM BLUE BODY

Illus. No.	Item and Trade Size	Actual Size	Undecorated Ware	Illus. No.	Item and Trade Size	Actual Size	Undecorated Ware
			<i>Per Doz. Net</i>				<i>Per Doz. Net</i>
	A. D. CUPS				FRUITS and ICE CREAMS		
69	Boston B/H	2 oz.	2.78	104	St. George 4 1/2 Fruit	5"	2.44
	Plaza B/H	3 1/4 oz.	2.78	104	Bond (Square Fruit)	5"	3.92
	Rock L/H	2 1/2 oz.	3.92	104	4" R/E Ice Cream	4 1/2"	2.18
	A. D. SAUCERS			104	4 1/2 R/E Ice Cream	5 1/8"	2.44
	Dora	4 5/8"	1.74	100	GRAPEFRUITS		
	Rock	4 7/8"	2.09	108	5 1/2 R/E Grapefruit	6 3/8"	3.92
	ASH TRAYS				ICE TUBS - 9"	9 1/4" x 5 1/2"	34.80
177	Park Lane	3 3/8" x 3 3/4"	7.83	113	MUSTARDS		
162	Ritz	5 3/4"	5.66		New York, Covered	1 1/2 oz.	3.92
163	Howe	4 1/4"	5.22		OATMEALS, NAPPIES and BOWLS		
164	Savoy (or Waldorf)	4 7/8"	5.66	34	30's Low Foot R/E	5 5/8"	4.35
	BAKERS or VEGETABLE DISHES				24's Ernest Oyster	6 1/8"	5.74
1	5" R/E	5 5/8"	3.13	117	Oatmeal Nappie (Bowl)	5 1/2"	3.92
1	6" R/E	6 3/4"	4.35		5" R/E Oatmeal	5 1/2"	3.92
1	8" R/E	8 3/4"	8.70		PICKLES		
	BUTTER CHIPS			131	St. Charles No. 2	8 3/8" x 4 7/8"	6.96
36	Delmonico R/E	3 3/8"	1.04		PLATES		
	BOUILLON CUPS			121	4" R/E Plates	5 3/8"	2.18
21	Bellevue Coffee U/H	8 oz.	3.48		5" R/E Plates	5 5/8"	2.26
23	Boston Tea U/H	7 oz.	3.48		6" R/E Plates	6 3/8"	2.52
17	Boston Tea B/H	7 oz.	4.79		6 1/4" R/E Plates	7"	2.70
	Sanders U/H	6 oz.	3.48		6 1/2" R/E Plates	7 5/8"	3.05
41	CAKE COVERS (Hole)	5 7/8" x 2 1/2"	6.09		7" R/E Plates	8 1/8"	3.48
	COFFEE CUPS				7 1/2" R/E Plates	8 7/8"	4.18
	Palmer House B/H (Boston)	9 oz.	4.35		8" R/E Plates	9 3/8"	5.22
	New Yorker B/H	7 oz.	3.92		8 1/2" R/E Plates	9 3/4"	6.09
	Penn (I.M.M.) B/H	9 oz.	4.79		New Yorker Grill	10 7/8"	7.83
	Rock L/H	8 oz.	4.70		10" Compartment Plate	10"	13.06
	COFFEE SAUCERS				PLATES - Rock		
	Penn (I.M.M.)	6"	2.18		5 3/4" B and B	Same	4.32
	Ovide R/E (Palmer House)	6 1/16"	2.18		6 3/4" Salad	"	5.05
	Rock	6 1/2"	2.61		7 1/8" Pie	"	5.22
	CELERY TRAYS				8 3/4" Luncheon	"	6.70
43	Penn No. 2	10 1/4" x 4 1/2"	10.44		9 3/8" Dinner	"	7.43
43	Penn No. 3	7 1/2" x 3 5/8"	8.70		9 3/4" Extra Dinner	"	8.53
	CHOCOLATE MUG				10 3/8" Service	"	8.70
45	Sanders L/H	8 oz.	4.35		SALAD (Bowls)		
	Huylers Hld.	7 oz.	4.35	138	6" R/E Footed	6 1/2"	6.09
	CREAMS and JUGS			138	8" R/E Footed	8 1/2"	12.18
76	Bismark U/H	1 3/4 oz.	2.61	139	7" Manhattan (Square)	5 5/8" x 5 5/8"	8.27
	Clinton U/H	3/4 oz.	2.18	139	8" Manhattan (Square)	6 5/8" x 6 5/8"	9.57
	Hub 48's U/H	3 1/2 oz.	3.48		SOUPS		
77	Huyler 60's U/H	1 1/4 oz.	2.18	126	5 3/4" R/E (Terrapin) R/D	6 7/8"	2.78
109	Chateau 56's Hld.	2 oz.	2.61	126	7" R/E R/D	8 1/2"	3.74
109	Chateau 48's Hld.	3 1/2 oz.	3.48		8 1/2" Rock R/E	Same	4.70
110	Chateau 48's U/H	3 1/2 oz.	3.48	128	6 1/2" Coupe R/E	7 1/2"	4.18
109	Chateau 46's Hld.	6 oz.	3.92		Waldorf Cream Soup Liner	7 1/4" x 6 3/4"	5.65
110	Chateau 46's U/H	6 oz.	3.92		SAUCE BOATS		
109	Chateau 42's Hld.	8 oz.	4.35	140	Club No. 1	9 oz.	10.44
109	Chateau 36's Hld.	15 oz.	6.96	140	Club No. 2	4 1/2 oz.	7.25
	DISHES			140	Club No. 3	2 oz.	6.09
84	6" R/E	7"	3.92		SUGARS		
84	7" R/E	8"	5.22		Tobe covered	13 1/2 oz.	10.44
84	8" R/E	9 1/8"	6.09		TEA CUPS		
84	9" R/E	10 1/4"	6.96	156	Bannard B/H	6 oz.	3.48
84	10" R/E	11 3/8"	8.70		Boston B/H	6 1/2 oz.	3.48
84	11" R/E	12 3/8"	11.31		Sanders L/H	6 oz.	3.48
84	12" R/E	13 5/8"	15.66		TEA SAUCERS		
84	14" R/E	15 3/4"	20.88		Hudson R/E or Boston	6 1/16"	1.92
	EGG CUPS				B.C.C.	5 5/8"	1.92
91	Auditorium U/H	6 1/2 oz.	3.48		TEA POT		
87	Boston U/H	5 oz.	3.92	159	Palace, Covered (1 Portion)	13 oz.	13.05
				160	Wedgewood Covered (1 Portion)	9 oz.	13.05

L/C PLATINUM BLUE MAKING LIST

ASH TRAYS—Park Lane	MUSTARDS—N. Y. Covd., Dairy
BAKERS—5", 6", 8"	OATMEALS—5" RE
BOWLS—30s L/F RE, Ernest Oyster	NAPPIES—Oatmeal
BUTTERS—Del	PICKLES—St. Chas. #2
BOUILLONS—Bellevue Cof. Unhld. Boston Tea Hld. & Unhld. Sanders Unhld.	PLATES—4" RE, 5" RE, 6" RE, 6¼" RE, 6½" RE, 7" RE, 7½" RE, 8" RE, 8½" RE, New Yorker Grill
CAKE COVERS—Hole	PLATES—Rockefeller 9¾", 8¾", 6¾", 5¾", 9¾"
CREAM SOUP LINERS—Waldorf	SOUPS—Coupe 6½"; R.D; 5¾", 7" RE. RD; Rockeller
CREAMS—Clinton Unhld. Huylers 60s Unhld. Bismark Unhld. Chateau 48s Hld. & Unhld. " 56s Hld. " 46s Hld. & Unhld. " 42s Hld. " 36s Hld. Hub 48s	SALADS—6" RE, 8" RE Manhattan 7" and 8"
CELERIES—Penn #2, #3	SAUCE BOATS—#1, #2, #3
DISHES—6", 7", 8", 9", 10", 11", 12", 14"	SUGARS—Tobe Covd.
EGG CUPS—Audit. Unhld., Boston	TEA CUPS—Sanders, Boston
FRUITS—St. George 4½"	TEA SAUCERS—Hudson
GRAPEFRUITS—RE	A. D. CUPS—Boston, Rockefeller
ICE CREAMS—4" RE, 4½" RE	A. D. SAUCERS—Dora, Rockefeller
ICE TUBS—9"	COMPARTMENT PLATES—10"
	COFFEE CUPS—Boston BH, Rockefeller New Yorker, Penn IMM
	COFFEE SAUCERS—Ovide RE, Rockefeller Penn IMM
	CHOCOLATE MUG—Sanders Hld.

SCAMMELL CHINA CO.

TRENTON, N. J.

Jobbers Cost Key

IVORY AND PLATINUM BLUE BODIES

IVORY WARE, Undecorated	White List plus 62%
PLATINUM BLUE, Undecorated	See Separate Plat. Blue List for net prices.

DECALS:

1. Borders, average, no bands or lines	Scale 23 plus 86%
2. Borders, wide color	Scale 23 plus 98%
3. Borders, average, with bands or lines	Scale 23 plus 98%
4. Borders, average, with Gold lines	Scale 23 plus 98%
5. Special designs on application	Scale 23 plus 110%

LINES AND BANDS, COLOR ONLY:

1. One line band (approx. 1/16" wide)	Scale 25 plus 50%
2. Two pin lines	Scale 25 plus 56%
3. One line band and one pin line (or three pin lines)	Scale 25 plus 62%
4. One line band and two pin lines (or four pin lines)	Scale 25 plus 68%
5. One line band and three pin lines (or five pin lines)	Scale 25 plus 74%
6. Two line band (approx. 1/8" wide)	Scale 25 plus 62%
7. Two line band and one pin line	Scale 25 plus 68%
8. Two line band and two pin lines	Scale 25 plus 74%
9. Two line band and three pin lines	Scale 25 plus 80%
10. Three line band (approx. 3/16" wide)	Scale 25 plus 68%
11. Three line band and one pin line	Scale 25 plus 74%
12. Three line band and two pin lines	Scale 25 plus 80%
13. Three line band and three pin lines	Scale 25 plus 86%
14. Four line band (approx. 1/4" wide)	Scale 25 plus 80%
15. Four line band and one line	Scale 25 plus 86%
16. Four line band and two pin lines	Scale 25 plus 92%
17. Four line band and three pin lines	Scale 25 plus 98%
18. Six line band (approx. 3/8" wide)	Scale 25 plus 92%
19. Six line band and one pin line	Scale 25 plus 98%
20. Six line band and two pin lines	Scale 25 plus 104%
21. Six line band and three pin lines	Scale 25 plus 110%
22. Wash Band (1/8" to 3/16") and 2 or 3 pin lines	Scale 25 plus 80%

COIN GOLD LINES AND BANDS:

1. One line band (approx. 1/16" wide)	Scale 27 plus 36%
2. Two pin lines	Scale 27 plus 42%
3. One line band and one pin line	Scale 27 plus 50%
(or three pin lines)	
4. One line band and two pin lines (or four pin lines)	Scale 27 plus 62%
5. One line band and three pin lines (or five pin lines)	Scale 27 plus 68%
6. Two line band (approx. 1/8" wide)	Scale 27 plus 62%
7. Two line band and one pin line	Scale 27 plus 74%
8. Two line band and two pin lines	Scale 27 plus 80%
9. Two line band and three pin lines	Scale 27 plus 86%
10. Three line band (approx. 3/16" wide)	Scale 27 plus 80%
11. Three line band and one pin line	Scale 27 plus 86%
12. Three line band and two pin lines	Scale 27 plus 98%

PRINTS:

1. Borders, plain print, average	Scale 29 plus 86%
2. Borders, plain print, average and color lines	Scale 29 plus 98%
3. Borders, plain print, wide	Scale 29 plus 98%
4. Centers and other treatments	Prices on application

SPRAYS AND COLORED GLAZES:

1. Pastel Glazes	Scale 31 plus 60%
2. Black Glazes and Brown Glazes	Prices on application
3. Solid Rim Sprays	Prices on application
4. Special pattern sprays	Prices on application

GOLD DECAL, GOLD PRINT ENCRUSTED WORK, SERVICE PLATES, ETC. Prices on application

SPECIAL HANDLE TREATMENT:

Note: (No charge made for spiking handles)

HANDLES, GOLD AND SOLID COLOR

(a) Solid Gold Handles	\$3.60 per doz.
(b) Half Matt Gold Handles	2.40 per doz.
(c) Clouded Gold Handles	1.20 per doz.
(d) Solid Color Handles	1.50 per doz.

CRESTS:

Crests with line, print, or decalomania decorations	One color54 per doz.
	Two color72 per doz.
	Three color84 per doz.

Crest only, no other decorations on items listing up to \$3.50 per dozen, to the price of Plain Ivory add.	One color84 per doz.
	Two color	\$1.08 per doz.
	Three color	\$1.20 per doz.

Crest only, no other decorations, on items listing over \$3.50 per dozen, to the price of Plain Ivory add	One color	\$1.68 per doz.
	Two color	\$2.16 per doz.
	Three color	\$2.40 per doz.

Gold, Crest only

Gold and Color Crests, combination

(Engraving charges for crests additional on all new work)